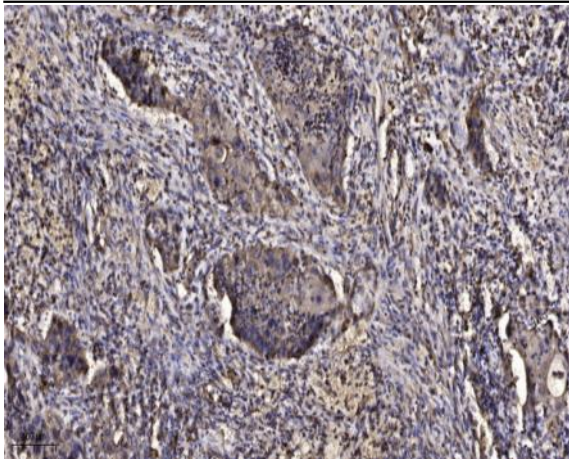


## MCM3 (Phospho Ser112) rabbit pAb

<b>Catalog No :</b>	YP1398
<b>Reactivity :</b>	Human;Rat;Mouse;
<b>Applications :</b>	WB;ELISA;IHC
<b>Target :</b>	MCM3
<b>Fields :</b>	>>DNA replication;>>Cell cycle
<b>Gene Name :</b>	MCM3
<b>Protein Name :</b>	MCM3 (Ser112)
<b>Human Gene Id :</b>	4172
<b>Human Swiss Prot No :</b>	P25205
<b>Mouse Gene Id :</b>	17215
<b>Mouse Swiss Prot No :</b>	P25206
<b>Immunogen :</b>	Synthesized phosho peptide around human MCM3 (Ser112)
<b>Specificity :</b>	This antibody detects endogenous levels of Human MCM3 (phospho-Ser112)
<b>Formulation :</b>	Liquid in PBS containing 50% glycerol, 0.5% BSA and 0.02% sodium azide.
<b>Source :</b>	Polyclonal, Rabbit,IgG
<b>Dilution :</b>	WB 1:500-2000;IHC 1:50-300; ELISA 2000-20000
<b>Purification :</b>	The antibody was affinity-purified from rabbit serum by affinity-chromatography using specific immunogen.
<b>Concentration :</b>	1 mg/ml

<b>Storage Stability :</b>	-15 °C to -25 °C/1 year(Do not lower than -25 °C)
<b>Observed Band :</b>	89kD
<b>Cell Pathway :</b>	DNA replication;Cell_Cycle_G1S;Cell_Cycle_G2M_DNA;
<b>Background :</b>	<p>The protein encoded by this gene is one of the highly conserved mini-chromosome maintenance proteins (MCM) that are involved in the initiation of eukaryotic genome replication. The hexameric protein complex formed by MCM proteins is a key component of the pre-replication complex (pre_RC) and may be involved in the formation of replication forks and in the recruitment of other DNA replication related proteins. This protein is a subunit of the protein complex that consists of MCM2-7. It has been shown to interact directly with MCM5/CDC46. This protein also interacts with and is acetylated by MCM3AP, a chromatin-associated acetyltransferase. The acetylation of this protein inhibits the initiation of DNA replication and cell cycle progression. Two transcript variants encoding different isoforms have been found for this gene. [provided by RefSeq, Jul 2012],</p>
<b>Function :</b>	<p>function:Acts as a factor that allows the DNA to undergo a single round of replication per cell cycle. Required for DNA replication and cell proliferation.,miscellaneous:Associated with the replication-specific DNA polymerase alpha.,PTM:Phosphorylated upon DNA damage, probably by ATM or ATR.,similarity:Belongs to the MCM family.,similarity:Contains 1 MCM domain.,</p>
<b>Subcellular Location :</b>	Nucleus . Chromosome . Associated with chromatin before the formation of nuclei and detaches from it as DNA replication progresses. .
<b>Expression :</b>	Cervix,Coronary artery,Epithelium,Lymph,Osteosarcoma,Pancre
<b>Sort :</b>	9464
<b>No4 :</b>	1

## Products Images



Immunohistochemical analysis of paraffin-embedded human Squamous cell carcinoma of lung. 1, Antibody was diluted at 1:200(4° overnight). 2, Tris-EDTA,pH9.0 was used for antigen retrieval. 3,Secondary antibody was diluted at 1:200(room temperature, 45min).