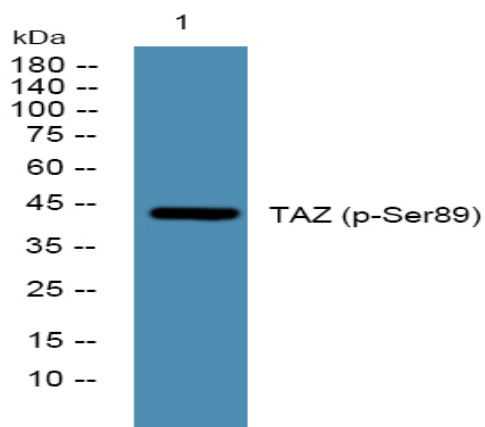


TAZ (Phospho Ser89) rabbit pAb

Catalog No :	YP1526
Reactivity :	Human;Mouse;Rat
Applications :	WB
Target :	TAZ
Fields :	>>Hippo signaling pathway;>>Hippo signaling pathway - multiple species
Gene Name :	WWTR1 TAZ
Protein Name :	TAZ (Ser89)
Human Gene Id :	25937
Human Swiss Prot No :	Q9GZV5
Mouse Gene Id :	97064
Mouse Swiss Prot No :	Q9EPK5
Immunogen :	Synthesized phospho peptide around human TAZ (Ser89)
Specificity :	This antibody detects endogenous levels of Human Mouse Rat TAZ (phospho-Ser89)
Formulation :	Liquid in PBS containing 50% glycerol, 0.5% BSA and 0.02% sodium azide.
Source :	Polyclonal, Rabbit,IgG
Dilution :	WB 1:1000-2000
Purification :	The antibody was affinity-purified from rabbit serum by affinity-chromatography using specific immunogen.
Concentration :	1 mg/ml

Storage Stability :	-15 °C to -25 °C/1 year(Do not lower than -25 °C)
Observed Band :	44kD
Function :	<p>domain: Binds to transcription factors via its WW domain., domain: The PDZ-binding motif is essential for stimulated gene transcription. It localizes the protein into both punctate nuclear foci and plasma membrane-associated complexes., function: Functions as a transcriptional coactivator., PTM: Phosphorylated. Phosphorylation results in the inhibition of transcriptional coactivation through YWHAZ-mediated nuclear export., similarity: Contains 1 WW domain., subcellular location: Concentrates along specific portions of the plasma membrane, and accumulates in punctate nuclear bodies. When phosphorylated, is retained in cytoplasm by YWHAZ., subunit: Binds to SLC9A3R2 via the PDZ motif at the plasma membrane. Binds to YWHAZ in vivo and in vitro through the phosphoserine-binding motif RSHSSP., tissue specificity: Highly expressed in kidney, heart, placenta and lung.,</p>
Subcellular Location :	<p>Nucleus . Cytoplasm . Cell membrane . Concentrates along specific portions of the plasma membrane, and accumulates in punctate nuclear bodies (By similarity). When phosphorylated, is retained in the cytoplasm by YWHAZ (By similarity). Can be retained in the nucleus by MED15 (PubMed:18568018). Localized in the cytoplasm in areas of epithelial cell high density (PubMed:21145499). At blastocyst stage expressed in the nucleus in trophoblastic cells, however expressed in the cytoplasm in the inner cell mass (By similarity). .</p>
Expression :	Highly expressed in kidney, heart, placenta and lung. Expressed in the thyroid tissue.
Sort :	16947
No4 :	1
Host :	Rabbit
Modifications :	Phospho

Products Images



Western blot analysis of lysates from U2OS cells, primary antibody was diluted at 1:1000, 4° over night