

MER/TYRO3 (Phospho Tyr753/Tyr685) Polyclonal Antibody

Catalog No :	YP1208
Reactivity :	Human:Y753/Y685;Mouse:Y748/Y675;Rat:Y748/Y675
Applications :	WB;ELISA;IHC
Target :	MerTK/Tyro3
Gene Name :	MERTK MER
Protein Name :	c-mer proto-oncogene tyrosine kinase
Human Gene Id :	10461/7301
Human Swiss Prot No :	Q12866/Q06418
Immunogen :	Synthesized phospho-peptide around the phosphorylation site of human MER/TYRO3 (Phospho-Tyr753/Tyr685)
Specificity :	This antibody detects endogenous levels of MER/TYRO3 at Human:Y753/Y685;Mouse:Y748/Y675;Rat:Y748/Y675, It doesn't react with total protein.
Formulation :	PBS, pH 7.4, containing 0.02% sodium azide as Preservative and 50% Glycerol.
Source :	Polyclonal, Rabbit,IgG
Dilution :	WB 1:500-2000;IHC 1:50-300; ELISA 2000-20000
Purification :	The antibody was affinity-purified from rabbit serum by affinity-chromatography using specific immunogen.
Concentration :	1 mg/ml
Storage Stability :	-15°C to -25°C/1 year(Do not lower than -25°C)
Observed Band :	110kD

Background :

This gene is a member of the MER/AXL/TYRO3 receptor kinase family and encodes a transmembrane protein with two fibronectin type-III domains, two Ig-like C2-type (immunoglobulin-like) domains, and one tyrosine kinase domain. Mutations in this gene have been associated with disruption of the retinal pigment epithelium (RPE) phagocytosis pathway and onset of autosomal recessive retinitis pigmentosa (RP). [provided by RefSeq, Jul 2008],

Function :

catalytic activity:ATP + a [protein]-L-tyrosine = ADP + a [protein]-L-tyrosine phosphate.,disease:Defects in MERTK are a cause of retinitis pigmentosa (RP) [MIM:268000]. RP that leads to degeneration of retinal photoreceptor cells. Patients typically have night vision blindness and loss of midperipheral visual field. As their condition progresses, they lose their far peripheral visual field and eventually central vision as well.,function:In case of filovirus infection, seems to function as a cell entry factor.,online information:Retina International's Scientific Newsletter,similarity:Belongs to the protein kinase superfamily. Tyr protein kinase family.,similarity:Belongs to the protein kinase superfamily. Tyr protein kinase family. AXL/UFO subfamily.,similarity:Contains 1 protein kinase domain.,similarity:Contains 2 fibronectin type-III domains.,similarity:Contains 2 Ig-like C2-type (imm

Subcellular Location :

Cell membrane ; Single-pass type I membrane protein .

Expression :

Not expressed in normal B- and T-lymphocytes but is expressed in numerous neoplastic B- and T-cell lines. Highly expressed in testis, ovary, prostate, lung, and kidney, with lower expression in spleen, small intestine, colon, and liver.

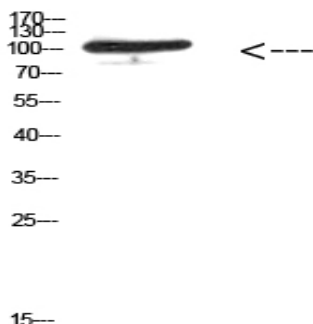
Sort :

9582

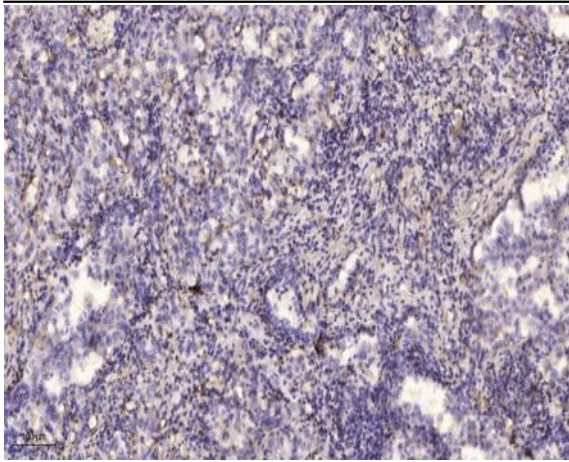
No4 :

1

Products Images



Western Blot analysis of 293T cells using Antibody diluted at 500. Secondary antibody(catalog#:RS0002) was diluted at 1:20000



Immunohistochemical analysis of paraffin-embedded human lung cancer. 1, Antibody was diluted at 1:200(4° overnight). 2, Tris-EDTA,pH9.0 was used for antigen retrieval. 3,Secondary antibody was diluted at 1:200(room temperature, 45min).