

NBK (phospho Ser35) Polyclonal Antibody

Catalog No :	YP1082
Reactivity :	Human;Rat;Mouse;
Applications :	IHC;IF;ELISA
Target :	NBK
Fields :	>>Endocrine resistance
Gene Name :	BIK
Protein Name :	Bcl-2-interacting killer
Human Gene Id :	638
Human Swiss Prot No :	Q13323
Mouse Swiss Prot No :	O70337
Immunogen :	Synthesized phospho-peptide around the phosphorylation site of human NBK (phospho Ser35)
Specificity :	Phospho-NBK (S35) Polyclonal Antibody detects endogenous levels of NBK protein only when phosphorylated at S35.
Formulation :	Liquid in PBS containing 50% glycerol, 0.5% BSA and 0.02% sodium azide.
Source :	Polyclonal, Rabbit,IgG
Dilution :	IHC 1:100 - 1:300. ELISA: 1:5000.. IF 1:50-200
Purification :	The antibody was affinity-purified from rabbit antiserum by affinity-chromatography using epitope-specific immunogen.
Concentration :	1 mg/ml
Storage Stability :	-15°C to -25°C/1 year(Do not lower than -25°C)

Molecularweight : 18kD

Background : The protein encoded by this gene shares a critical BH3 domain with other death-promoting proteins, such as BID, BAK, BAD and BAX, that is required for its pro-apoptotic activity, and for interaction with anti-apoptotic members of the BCL2 family, and viral survival-promoting proteins. Since the activity of this protein is suppressed in the presence of survival-promoting proteins, it is suggested as a likely target for anti-apoptotic proteins. [provided by RefSeq, Sep 2011],

Function : domain:Intact BH3 motif is required by BIK, BID, BAK, BAD and BAX for their pro-apoptotic activity and for their interaction with anti-apoptotic members of the Bcl-2 family.,function:Accelerates programmed cell death. Binding to the apoptosis repressors Bcl-X(L), BHRF1, Bcl-2 or its adenovirus homolog E1B 19k protein suppresses this death-promoting activity. Does not interact with BAX.,subcellular location:Around the nuclear envelope, and in cytoplasmic membranes.,

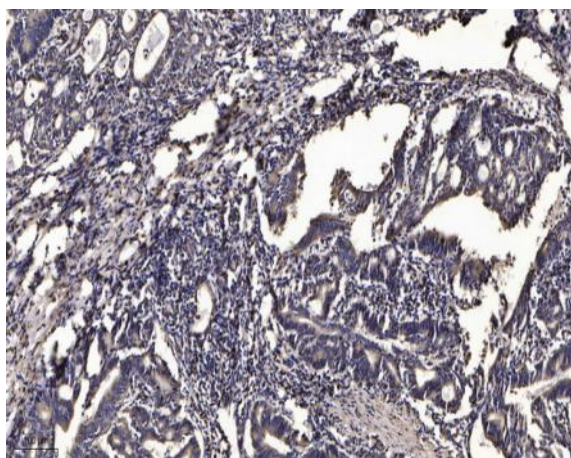
Subcellular Location : Endomembrane system; Single-pass membrane protein. Mitochondrion membrane ; Single-pass membrane protein . Around the nuclear envelope, and in cytoplasmic membranes.

Expression : B-cell,Lymph,Lymphoid,

Sort : 10583

No4 : 1

Products Images



Immunohistochemical analysis of paraffin-embedded human Gastric adenocarcinoma. 1, Antibody was diluted at 1:200(4° overnight). 2, Tris-EDTA,pH9.0 was used for antigen retrieval. 3,Secondary antibody was diluted at 1:200(room temperature, 45min).