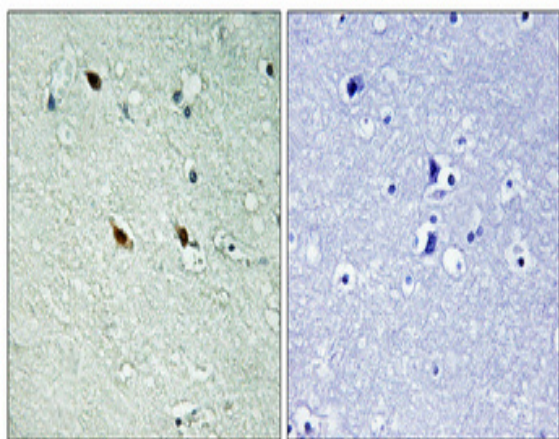


NIFK (phospho Thr234) Polyclonal Antibody

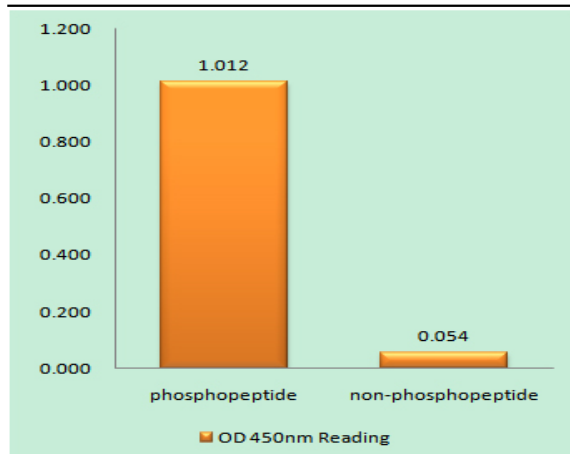
Catalog No :	YP1159
Reactivity :	Human;Mouse
Applications :	IHC;IF;ELISA
Target :	NIFK
Gene Name :	MKI67IP
Protein Name :	MKI67 FHA domain-interacting nucleolar phosphoprotein
Human Gene Id :	84365
Human Swiss Prot No :	Q9BYG3
Mouse Gene Id :	67949
Mouse Swiss Prot No :	Q91VE6
Immunogen :	The antiserum was produced against synthesized peptide derived from human NIFK around the phosphorylation site of Thr234. AA range:200-249
Specificity :	Phospho-NIFK (T234) Polyclonal Antibody detects endogenous levels of NIFK protein only when phosphorylated at T234.
Formulation :	Liquid in PBS containing 50% glycerol, 0.5% BSA and 0.02% sodium azide.
Source :	Polyclonal, Rabbit,IgG
Dilution :	IHC 1:100 - 1:300. IF 1:200 - 1:1000. ELISA: 1:40000. Not yet tested in other applications.
Purification :	The antibody was affinity-purified from rabbit antiserum by affinity-chromatography using epitope-specific immunogen.
Concentration :	1 mg/ml

Storage Stability :	-15°C to -25°C/1 year(Do not lower than -25°C)
Molecularweight :	34kD
Background :	This gene encodes a protein that interacts with the forkhead-associated domain of the Ki-67 antigen. The encoded protein may bind RNA and may play a role in mitosis and cell cycle progression. Multiple pseudogenes exist on chromosomes 5, 10, 12, 15, and 19.[provided by RefSeq, Jan 2009],
Function :	PTM:Sequentially phosphorylated on Thr-238, Thr-234 and Ser-230. Thr-234 is phosphorylated only when Thr-238 is phosphorylated. Likewise, phosphorylation at Ser-230 requires that Thr-234 and Thr-238 are phosphorylated. Phosphorylation enhances MKI67 binding.,similarity:Contains 1 RRM (RNA recognition motif) domain.,subcellular location:Localizes to mitotic chromosomes in conjunction with MKI67.,subunit:Binds to the FHA domain of MKI67; this interaction is enhanced in mitosis.,
Subcellular Location :	Nucleus, nucleolus. Chromosome. Localizes to mitotic chromosomes in conjunction with MKI67.
Expression :	Brain,Cervix carcinoma,Epithelium,Lung,Plac
Sort :	10851
No4 :	1
Host :	Rabbit
Modifications :	Phospho

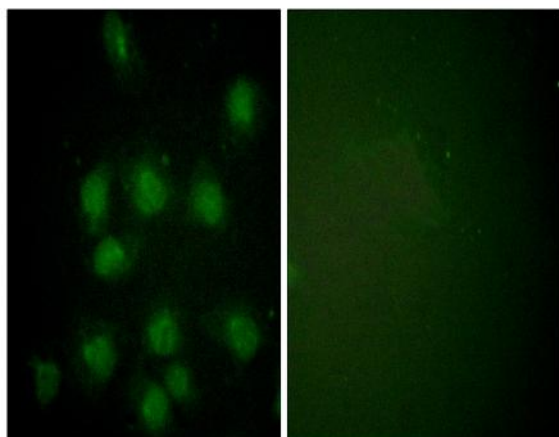
Products Images



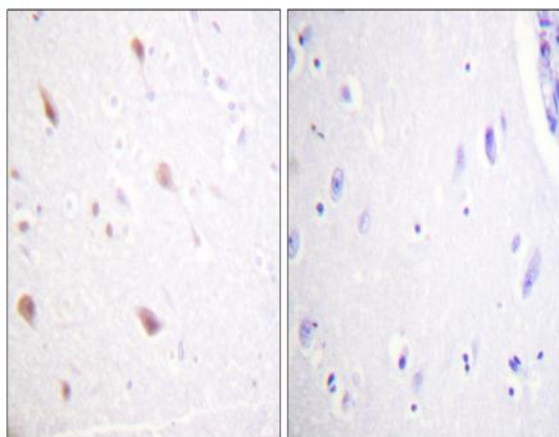
Immunohistochemical analysis of paraffin-embedded Human brain. Antibody was diluted at 1:100(4° overnight). High-pressure and temperature Tris-EDTA,pH8.0 was used for antigen retrieval. Negative control (right) obtained from antibody was pre-absorbed by immunogen peptide.



Enzyme-Linked Immunosorbent Assay (Phospho-ELISA) for Immunogen Phosphopeptide (Phospho-left) and Non-Phosphopeptide (Phospho-right), using NIFK (Phospho-Thr234) Antibody



Immunofluorescence analysis of HUVEC cells, using NIFK (Phospho-Thr234) Antibody. The picture on the right is blocked with the phospho peptide.



Immunohistochemistry analysis of paraffin-embedded human brain, using NIFK (Phospho-Thr234) Antibody. The picture on the right is blocked with the phospho peptide.