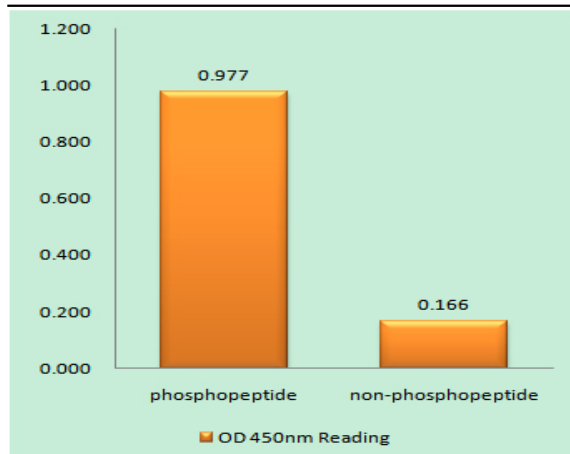


MARK1/2/3/4 (phospho Thr215) Polyclonal Antibody

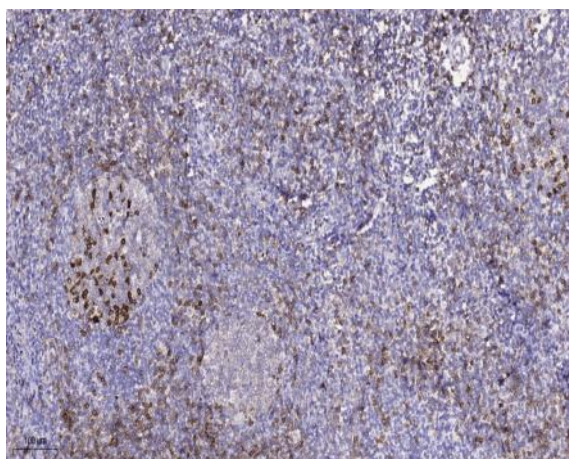
Catalog No :	YP1008
Reactivity :	Human;Mouse;Rat
Applications :	IHC;IF;ELISA
Target :	MARK1/2/3/4
Gene Name :	MARK1/2/3/4
Protein Name :	Serine/threonine-protein kinase MARK1/2/3/4
Human Gene Id :	4139/2011/4140/57787
Human Swiss Prot No :	Q9P0L2/Q7KZI7/P27448/Q96L34
Mouse Gene Id :	226778/13728/17169/232944
Rat Gene Id :	117016/60328/170577
Rat Swiss Prot No :	O08678/O08679/Q8VHF0
Immunogen :	The antiserum was produced against synthesized peptide derived from human MARK1/2/3/4 around the phosphorylation site of Thr215. AA range:181-230
Specificity :	Phospho-MARK1/2/3/4 (T215) Polyclonal Antibody detects endogenous levels of MARK1/2/3/4 protein only when phosphorylated at T215.
Formulation :	Liquid in PBS containing 50% glycerol, 0.5% BSA and 0.02% sodium azide.
Source :	Polyclonal, Rabbit,IgG
Dilution :	IHC 1:100 - 1:300. ELISA: 1:5000.. IF 1:50-200
Purification :	The antibody was affinity-purified from rabbit antiserum by affinity-chromatography using epitope-specific immunogen.
Concentration :	1 mg/ml

Storage Stability :	-15 °C to -25 °C/1 year(Do not lower than -25 °C)
Molecularweight :	89kD
Cell Pathway :	Regulation of Microtubule Dynamics
Background :	<p>catalytic activity:ATP + a protein = ADP + a phosphoprotein.,cofactor:Magnesium.,enzyme regulation:Activated by phosphorylation on Thr-215 by STK11 in complex with STE20-related adapter-alpha (STRAD alpha) pseudo kinase and CAB39.,function:May play a role in cytoskeletal stability.,similarity:Belongs to the protein kinase superfamily. CAMK Ser/Thr protein kinase family. MARK subfamily.,similarity:Contains 1 KA1 (kinase-associated) domain.,similarity:Contains 1 protein kinase domain.,similarity:Contains 1 UBA domain.,subcellular location:Appears to localize to an intracellular network.,tissue specificity:Highly expressed in heart, skeletal muscle, brain, fetal brain and fetal kidney.,</p>
Function :	<p>catalytic activity:ATP + a protein = ADP + a phosphoprotein.,cofactor:Magnesium.,enzyme regulation:Activated by phosphorylation on Thr-215 by STK11 in complex with STE20-related adapter-alpha (STRAD alpha) pseudo kinase and CAB39.,function:May play a role in cytoskeletal stability.,similarity:Belongs to the protein kinase superfamily. CAMK Ser/Thr protein kinase family. MARK subfamily.,similarity:Contains 1 KA1 (kinase-associated) domain.,similarity:Contains 1 protein kinase domain.,similarity:Contains 1 UBA domain.,subcellular location:Appears to localize to an intracellular network.,tissue specificity:Highly expressed in heart, skeletal muscle, brain, fetal brain and fetal kidney.,</p>
Subcellular Location :	Cell membrane ; Peripheral membrane protein . Cytoplasm, cytoskeleton . Cytoplasm . Cell projection, dendrite . Appears to localize to an intracellular network. .
Expression :	Highly expressed in heart, skeletal muscle, brain, fetal brain and fetal kidney.
Sort :	9392
No4 :	1

Products Images



Enzyme-Linked Immunosorbent Assay (Phospho-ELISA) for Immunogen Phosphopeptide (Phospho-left) and Non-Phosphopeptide (Phospho-right), using MARK1/2/3/4 (Phospho-Thr215) Antibody



Immunohistochemical analysis of paraffin-embedded human tonsil. 1, Antibody was diluted at 1:200(4° overnight). 2, Tris-EDTA,pH9.0 was used for antigen retrieval. 3,Secondary antibody was diluted at 1:200(room temperature, 45min).