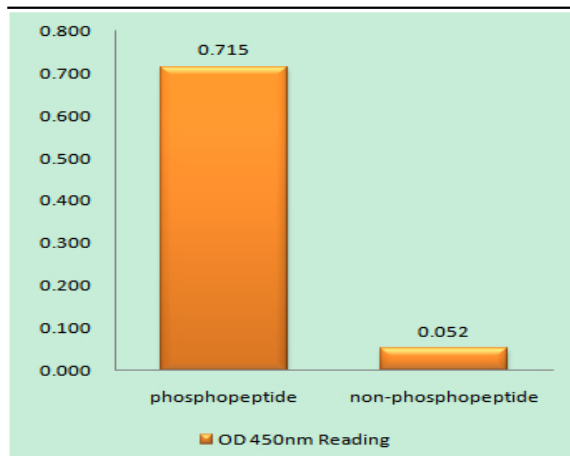


DNA-PKCS (phospho Ser2056) Polyclonal Antibody

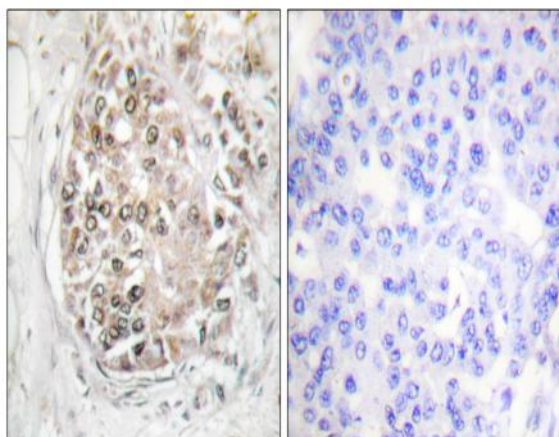
Catalog No :	YP0987
Reactivity :	Human;Mouse
Applications :	WB;IHC;IF;ELISA
Target :	DNA-PKCS
Fields :	>>Non-homologous end-joining;>>Cell cycle
Gene Name :	PRKDC
Protein Name :	DNA-dependent protein kinase catalytic subunit
Human Gene Id :	5591
Human Swiss Prot No :	P78527
Mouse Gene Id :	19090
Mouse Swiss Prot No :	P97313
Immunogen :	The antiserum was produced against synthesized peptide derived from human DNA-PK around the phosphorylation site of Ser2056. AA range:2022-2071
Specificity :	Phospho-DNA-PKCS (S2056) Polyclonal Antibody detects endogenous levels of DNA-PKCS protein only when phosphorylated at S2056.
Formulation :	Liquid in PBS containing 50% glycerol, 0.5% BSA and 0.02% sodium azide.
Source :	Polyclonal, Rabbit,IgG
Dilution :	IHC 1:100 - 1:300. ELISA: 1:20000, WB 1:500-2000. IF 1:50-200
Purification :	The antibody was affinity-purified from rabbit antiserum by affinity-chromatography using epitope-specific immunogen.
Concentration :	1 mg/ml

Storage Stability :	-15 °C to -25 °C/1 year(Do not lower than -25 °C)
Molecularweight :	469kD
Cell Pathway :	Non-homologous end-joining;Cell_Cycle_G1S;Cell_Cycle_G2M_DNA;
Background :	This gene encodes the catalytic subunit of the DNA-dependent protein kinase (DNA-PK). It functions with the Ku70/Ku80 heterodimer protein in DNA double strand break repair and recombination. The protein encoded is a member of the PI3/PI4-kinase family.[provided by RefSeq, Jul 2010],
Function :	catalytic activity:ATP + a protein = ADP + a phosphoprotein.,enzyme regulation:Inhibited by wortmannin. Activity of the enzyme seems to be attenuated by autophosphorylation.,function:Serine/threonine-protein kinase that acts as a molecular sensor for DNA damage. Involved in DNA nonhomologous end joining (NHEJ) required for double-strand break (DSB) repair and V(D)J recombination. Must be bound to DNA to express its catalytic properties. Promotes processing of hairpin DNA structures in V(D)J recombination by activation of the hairpin endonuclease artemis (DCLRE1C). The assembly of the DNA-PK complex at DNA ends is also required for the NHEJ ligation step. Required to protect and align broken ends of DNA. May also act as a scaffold protein to aid the localization of DNA repair proteins to the site of damage. Found at the ends of chromosomes, suggesting a further role in the maintenance of
Subcellular Location :	Nucleus . Nucleus, nucleolus .
Expression :	Brain,Cervix carcinoma,Epithelium,Fetal lung,Placen
Tag :	orthogonal
Sort :	5194
No4 :	1

Products Images



Enzyme-Linked Immunosorbent Assay (Phospho-ELISA) for Immunogen Phosphopeptide (Phospho-left) and Non-Phosphopeptide (Phospho-right), using DNA-PK (Phospho-Ser2056) Antibody



Immunohistochemistry analysis of paraffin-embedded human breast carcinoma, using DNA-PK (Phospho-Ser2056) Antibody. The picture on the right is blocked with the phospho peptide.