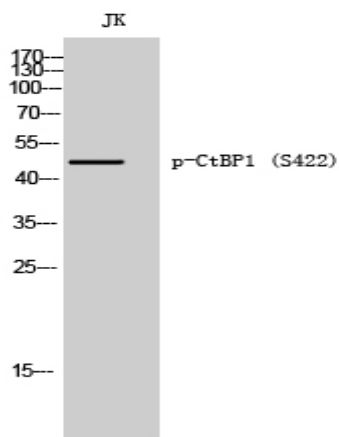


CtBP1 (phospho Ser422) Polyclonal Antibody

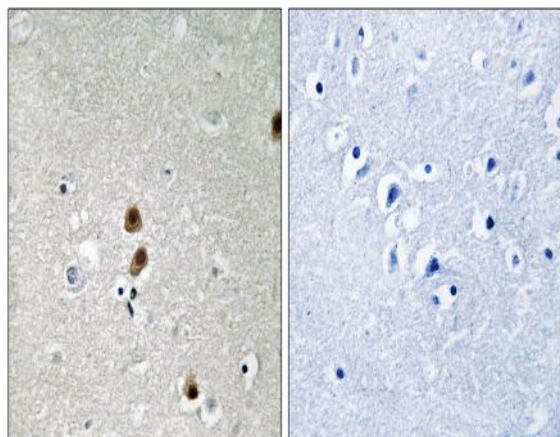
Catalog No :	YP0815
Reactivity :	Human;Mouse;Rat
Applications :	WB;IHC;IF;ELISA
Target :	CtBP1
Fields :	>>Wnt signaling pathway;>>Notch signaling pathway;>>Pathways in cancer;>>Chronic myeloid leukemia
Gene Name :	CTBP1
Protein Name :	C-terminal-binding protein 1
Human Gene Id :	1487
Human Swiss Prot No :	Q13363
Mouse Gene Id :	13016
Mouse Swiss Prot No :	O88712
Rat Gene Id :	29382
Rat Swiss Prot No :	Q9Z2F5
Immunogen :	The antiserum was produced against synthesized peptide derived from human CtBP1 around the phosphorylation site of Ser422. AA range:388-437
Specificity :	Phospho-CtBP1 (S422) Polyclonal Antibody detects endogenous levels of CtBP1 protein only when phosphorylated at S422.
Formulation :	Liquid in PBS containing 50% glycerol, 0.5% BSA and 0.02% sodium azide.
Source :	Polyclonal, Rabbit,IgG
Dilution :	WB 1:500 - 1:2000. IHC 1:100 - 1:300. ELISA: 1:10000.. IF 1:50-200

Purification :	The antibody was affinity-purified from rabbit antiserum by affinity-chromatography using epitope-specific immunogen.
Concentration :	1 mg/ml
Storage Stability :	-15°C to -25°C/1 year(Do not lower than -25°C)
Observed Band :	48kD
Cell Pathway :	WNT;WNT-T CELLNotch;Pathways in cancer;Chronic myeloid leukemia;
Background :	This gene encodes a protein that binds to the C-terminus of adenovirus E1A proteins. This phosphoprotein is a transcriptional repressor and may play a role during cellular proliferation. This protein and the product of a second closely related gene, CTBP2, can dimerize. Both proteins can also interact with a polycomb group protein complex which participates in regulation of gene expression during development. Alternative splicing of transcripts from this gene results in multiple transcript variants. [provided by RefSeq, Jul 2008],
Function :	cofactor:NAD. Required for efficient interaction with E1A. Cofactor binding induces a conformation change.,function:Involved in controlling the equilibrium between tubular and stacked structures in the Golgi complex (By similarity). Co-repressor targeting diverse transcription regulators such as GLIS2. Has dehydrogenase activity.,PTM:ADP-ribosylated; when cells are exposed to brefeldin-A (BFA).,PTM:Sumoylation on Lys-428 is promoted by the E3 SUMO-protein ligase CBX4.,PTM:The level of phosphorylation appears to be regulated during the cell cycle. Phosphorylated upon DNA damage, probably by ATM or ATR. Phosphorylation by HIPK2 on Ser-422 induces proteasomal degradation.,similarity:Belongs to the D-isomer specific 2-hydroxyacid dehydrogenase family.,subunit:Interacts with the C-terminus of adenovirus E1A protein, ELK3 and CTIP via their consensus motif P-X-[DNS]-L-[STVA]. Can form homodimer
Subcellular Location :	Cytoplasm . Nucleus .
Expression :	Expressed in germinal center B-cells.
Tag :	orthogonal
Sort :	4648
No4 :	1
Host :	Rabbit

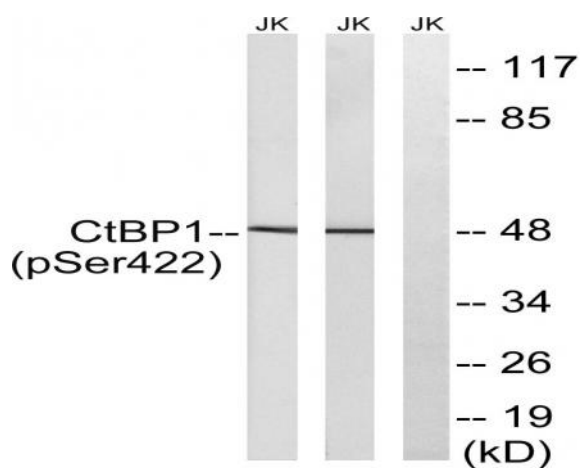
Products Images



Western Blot analysis of JK cells using Phospho-CtBP1 (S422) Polyclonal Antibody



Immunohistochemistry analysis of paraffin-embedded human brain, using CtBP1 (Phospho-Ser422) Antibody. The picture on the right is blocked with the phospho peptide.



Western blot analysis of lysates from Jurkat cells treated with TNF 20ng/ml 30' and Jurkat cells treated with UV 15', using CtBP1 (Phospho-Ser422) Antibody. The lane on the right is blocked with the phospho peptide.