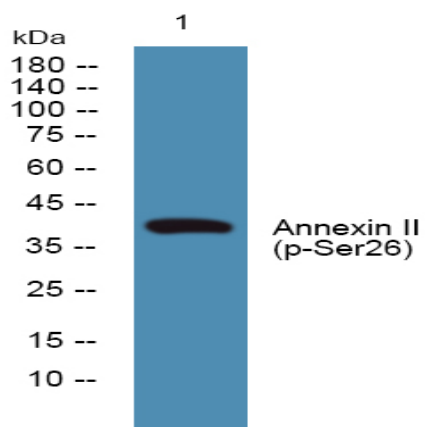


## Annexin II (phospho Ser26) Polyclonal Antibody

|                              |   |
|------------------------------|---|
| <b>Catalog No :</b>          | YP0511  |
| <b>Reactivity :</b>          | Human;Mouse;Rat   |
| <b>Applications :</b>        | WB;ELISA  |
| <b>Target :</b>              | Annexin II  |
| <b>Fields :</b>              | >>Salmonella infection  |
| <b>Gene Name :</b>           | ANXA2   |
| <b>Protein Name :</b>        | Annexin A2  |
| <b>Human Gene Id :</b>       | 302   |
| <b>Human Swiss Prot No :</b> | P07355  |
| <b>Mouse Gene Id :</b>       | 12306   |
| <b>Mouse Swiss Prot No :</b> | P07356  |
| <b>Rat Gene Id :</b>         | 56611   |
| <b>Rat Swiss Prot No :</b>   | Q07936  |
| <b>Immunogen :</b>           | Synthesized phospho-peptide around the phosphorylation site of human Annexin II (phospho Ser26)                               |
| <b>Specificity :</b>         | Phospho-Annexin II (S26) Polyclonal Antibody detects endogenous levels of Annexin II protein only when phosphorylated at S26. |
| <b>Formulation :</b>         | Liquid in PBS containing 50% glycerol, 0.5% BSA and 0.02% sodium azide.   |
| <b>Source :</b>              | Polyclonal, Rabbit,IgG  |
| <b>Dilution :</b>            | WB 1:500 - 1:2000. ELISA: 1:10000. Not yet tested in other applications.  |

|                               |  |
|-------------------------------|--|
| <b>Purification :</b>         | The antibody was affinity-purified from rabbit antiserum by affinity-chromatography using epitope-specific immunogen.  |
| <b>Concentration :</b>        | 1 mg/ml  |
| <b>Storage Stability :</b>    | -15°C to -25°C/1 year(Do not lower than -25°C)   |
| <b>Observed Band :</b>        | 38kD   |
| <b>Background :</b>           | This gene encodes a member of the annexin family. Members of this calcium-dependent phospholipid-binding protein family play a role in the regulation of cellular growth and in signal transduction pathways. This protein functions as an autocrine factor which heightens osteoclast formation and bone resorption. This gene has three pseudogenes located on chromosomes 4, 9 and 10, respectively. Multiple alternatively spliced transcript variants encoding different isoforms have been found for this gene. [provided by RefSeq, Jul 2008],  |
| <b>Function :</b>             | domain:A pair of annexin repeats may form one binding site for calcium and phospholipid.,function:Calcium-regulated membrane-binding protein whose affinity for calcium is greatly enhanced by anionic phospholipids. It binds two calcium ions with high affinity. May be involved in heat-stress response.,miscellaneous:It may cross-link plasma membrane phospholipids with actin and the cytoskeleton and be involved with exocytosis.,online information:Red velvet - Issue 86 of September 2007,PTM:Phosphorylation of Tyr-24 enhances heat stress-induced translocation to the cell surface.,similarity:Belongs to the annexin family.,similarity:Contains 4 annexin repeats.,subcellular location:In the lamina beneath the plasma membrane. Identified by mass spectrometry in melanosome fractions from stage I to stage IV. Translocated from the cytoplasm to the cell surface through a Golgi-independent mechanism.,s |
| <b>Subcellular Location :</b> | Secreted, extracellular space, extracellular matrix, basement membrane . Melanosome . In the lamina beneath the plasma membrane. Identified by mass spectrometry in melanosome fractions from stage I to stage IV. Translocated from the cytoplasm to the cell surface through a Golgi-independent mechanism.  |
| <b>Expression :</b>           | Brain,Colon,Colon adenocarcinoma,Epithelium,Osteosarcoma,Pancreas,Placenta,Prostate,Skin,Te  |
| <b>Sort :</b>                 | 2051   |
| <b>No4 :</b>                  | 1  |

## Products Images



Western blot analysis of lysates from SH-SY5Y cells, primary antibody was diluted at 1:1000, 4° over night