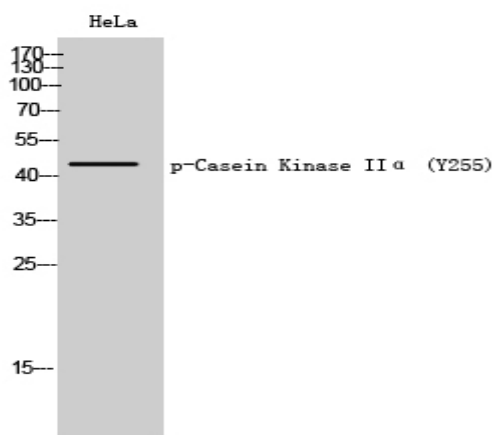


## Casein Kinase IIα (phospho Tyr255) Polyclonal Antibody

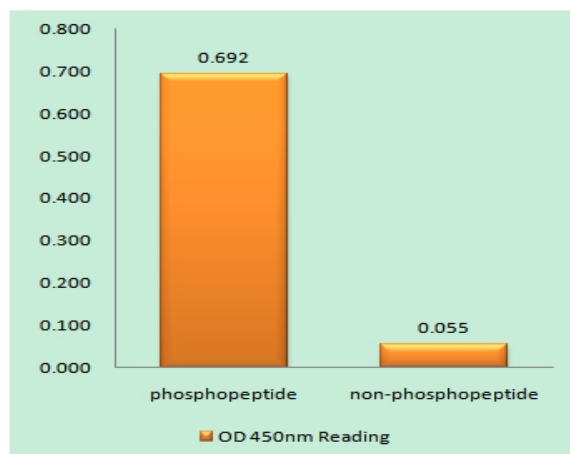
<b>Catalog No :</b>	YP0391
<b>Reactivity :</b>	Human;Mouse;Rat
<b>Applications :</b>	WB;IHC;IF;ELISA
<b>Target :</b>	Casein Kinase IIα
<b>Fields :</b>	>>Ribosome biogenesis in eukaryotes;>>NF-kappa B signaling pathway;>>Mitophagy - animal;>>Wnt signaling pathway;>>Adherens junction;>>Alzheimer disease;>>Prion disease;>>Pathways of neurodegeneration - multiple diseases;>>Measles;>>PD-L1 expression and PD-1 checkpoint pathway in cancer
<b>Gene Name :</b>	CSNK2A1
<b>Protein Name :</b>	Casein kinase II subunit alpha
<b>Human Gene Id :</b>	1457
<b>Human Swiss Prot No :</b>	P68400
<b>Mouse Gene Id :</b>	12995
<b>Mouse Swiss Prot No :</b>	Q60737
<b>Rat Gene Id :</b>	116549
<b>Rat Swiss Prot No :</b>	P19139
<b>Immunogen :</b>	The antiserum was produced against synthesized peptide derived from human Casein Kinase II alpha around the phosphorylation site of Tyr255. AA range:221-270
<b>Specificity :</b>	Phospho-Casein Kinase IIα (Y255) Polyclonal Antibody detects endogenous levels of Casein Kinase IIα protein only when phosphorylated at Y255.
<b>Formulation :</b>	Liquid in PBS containing 50% glycerol, 0.5% BSA and 0.02% sodium azide.

<b>Source :</b>	Polyclonal, Rabbit,IgG
<b>Dilution :</b>	WB 1:500 - 1:2000. IHC 1:100 - 1:300. ELISA: 1:10000.. IF 1:50-200
<b>Purification :</b>	The antibody was affinity-purified from rabbit antiserum by affinity-chromatography using epitope-specific immunogen.
<b>Concentration :</b>	1 mg/ml
<b>Storage Stability :</b>	-15°C to -25°C/1 year(Do not lower than -25°C)
<b>Observed Band :</b>	45kD
<b>Cell Pathway :</b>	WNT;WNT-T CELLAdherens_Junction;Adherens_Junction;
<b>Background :</b>	<p>Casein kinase II is a serine/threonine protein kinase that phosphorylates acidic proteins such as casein. It is involved in various cellular processes, including cell cycle control, apoptosis, and circadian rhythm. The kinase exists as a tetramer and is composed of an alpha, an alpha-prime, and two beta subunits. The alpha subunits contain the catalytic activity while the beta subunits undergo autophosphorylation. The protein encoded by this gene represents the alpha subunit. While this gene is found on chromosome 20, a related transcribed pseudogene is found on chromosome 11. Three transcript variants encoding two different proteins have been found for this gene. [provided by RefSeq, Jul 2014],</p>
<b>Function :</b>	<p>catalytic activity:ATP + a protein = ADP + a phosphoprotein.,function:Casein kinases are operationally defined by their preferential utilization of acidic proteins such as caseins as substrates. The alpha and alpha' chains contain the catalytic site. Participates in Wnt signaling. CK2 phosphorylates 'Ser-392' of p53/TP53 following UV irradiation.,similarity:Belongs to the protein kinase superfamily.,similarity:Belongs to the protein kinase superfamily. Ser/Thr protein kinase family. CK2 subfamily.,similarity:Contains 1 protein kinase domain.,subunit:Tetramer composed of an alpha chain, an alpha' and two beta chains. Also component of a CK2-SPT16-SSRP1 complex composed of SSRP1, SUPT16H, CSNK2A1, CSNK2A2 and CSNK2B, the complex associating following UV irradiation. Interacts with RNPS1.,</p>
<b>Subcellular Location :</b>	Nucleus .
<b>Expression :</b>	Expressed in gastric carcinoma tissue and the expression gradually increases with the progression of the carcinoma (at protein level).
<b>Sort :</b>	3130
<b>No4 :</b>	1

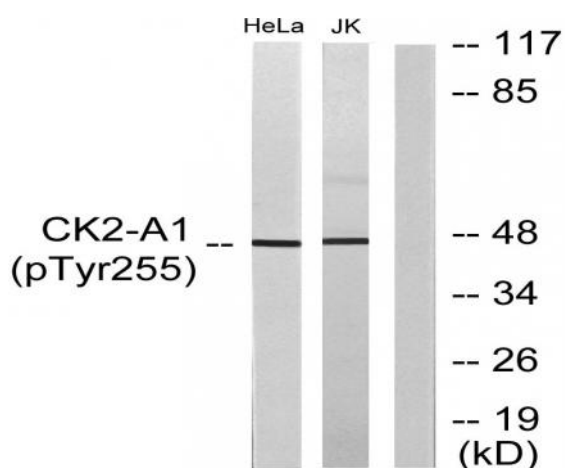
## Products Images



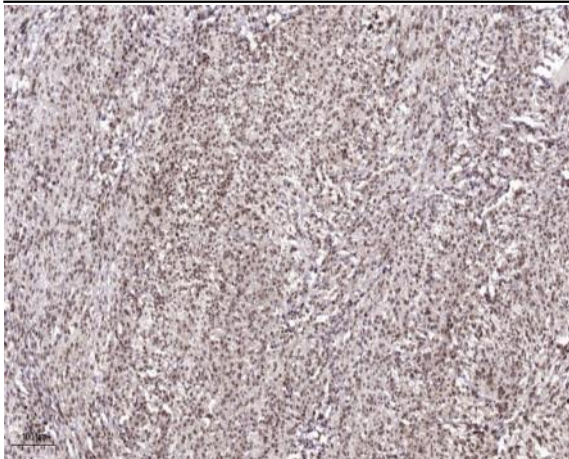
Western Blot analysis of HeLa cells using Phospho-Casein Kinase IIα (Y255) Polyclonal Antibody cells nucleus extracted by Minute TM Cytoplasmic and Nuclear Fractionation kit (SC-003, Inventbiotech, MN, USA).



Enzyme-Linked Immunosorbent Assay (Phospho-ELISA) for Immunogen Phosphopeptide (Phospho-left) and Non-Phosphopeptide (Phospho-right), using Casein Kinase II alpha (Phospho-Tyr255) Antibody



Western blot analysis of lysates from HeLa cells and Jurkat cells, using Casein Kinase II alpha (Phospho-Tyr255) Antibody. The lane on the right is blocked with the phospho peptide.



Immunohistochemical analysis of paraffin-embedded human Colon cancer. 1, Antibody was diluted at 1:200(4° overnight). 2, Tris-EDTA,pH9.0 was used for antigen retrieval. 3,Secondary antibody was diluted at 1:200(room temperature, 45min).