

p70 S6 kinase α (phospho Ser434) Polyclonal Antibody

Catalog No :	YP0213
Reactivity :	Human;Mouse;Rat;Monkey
Applications :	WB;IHC;IF;ELISA
Target :	p70 S6 kinase α
Fields :	>>EGFR tyrosine kinase inhibitor resistance;>>Endocrine resistance;>>ErbB signaling pathway;>>HIF-1 signaling pathway;>>Autophagy - animal;>>mTOR signaling pathway;>>PI3K-Akt signaling pathway;>>AMPK signaling pathway;>>Longevity regulating pathway;>>Longevity regulating pathway - multiple species;>>TGF-beta signaling pathway;>>Apelin signaling pathway;>>Fc gamma R-mediated phagocytosis;>>Thermogenesis;>>Insulin signaling pathway;>>Insulin resistance;>>Shigellosis;>>Human cytomegalovirus infection;>>Human papillomavirus infection;>>Human immunodeficiency virus 1 infection;>>Pathways in cancer;>>Proteoglycans in cancer;>>Chemical carcinogenesis - receptor activation;>>Colorectal cancer;>>Pancreatic cancer;>>Acute myeloid leukemia;>>Breast cancer;>>Hepatocellular carcinoma;>>Gastric cancer;>>Choline metabolism in cancer;>>PD-L1 expression and PD-1 checkpoint pathway in cancer
Gene Name :	RPS6KB1 STK14A P70S6K
Protein Name :	Ribosomal protein S6 kinase beta-1
Human Gene Id :	6198
Human Swiss Prot No :	P23443
Mouse Gene Id :	72508
Mouse Swiss Prot No :	Q8BSK8
Rat Gene Id :	83840
Rat Swiss Prot No :	P67999
Immunogen :	The antiserum was produced against synthesized peptide derived from human

p70 S6 Kinase around the phosphorylation site of Ser434. AA range:401-450

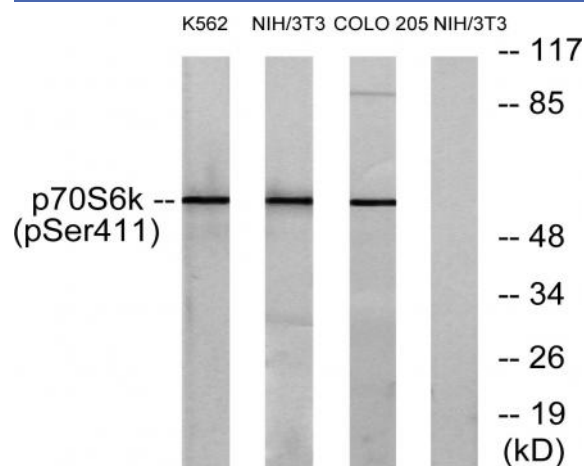
Specificity :	Phospho-p70 S6 kinase α (S434) Polyclonal Antibody detects endogenous levels of p70 S6 kinase α protein only when phosphorylated at S434.
Formulation :	Liquid in PBS containing 50% glycerol, 0.5% BSA and 0.02% sodium azide.
Source :	Polyclonal, Rabbit,IgG
Dilution :	WB 1:500 - 1:2000. IHC 1:100 - 1:300. ELISA: 1:10000.. IF 1:50-200
Purification :	The antibody was affinity-purified from rabbit antiserum by affinity-chromatography using epitope-specific immunogen.
Concentration :	1 mg/ml
Storage Stability :	-15°C to -25°C/1 year(Do not lower than -25°C)
Observed Band :	60kD
Cell Pathway :	Regulates Angiogenesis; Insulin Receptor; ErbB/HER; mTOR; B Cell Receptor; PI3K/Akt; PI3K/Akt; AMPK
Background :	ribosomal protein S6 kinase B1(RPS6KB1) Homo sapiens This gene encodes a member of the ribosomal S6 kinase family of serine/threonine kinases. The encoded protein responds to mTOR (mammalian target of rapamycin) signaling to promote protein synthesis, cell growth, and cell proliferation. Activity of this gene has been associated with human cancer. Alternatively spliced transcript variants have been observed. The use of alternative translation start sites results in isoforms with longer or shorter N-termini which may differ in their subcellular localizations. There are two pseudogenes for this gene on chromosome 17. [provided by RefSeq, Jan 2013],
Function :	catalytic activity:ATP + a protein = ADP + a phosphoprotein.,enzyme regulation:Activation by serine/threonine phosphorylation and protein kinase C, inactivated by type 2A phosphatase.,function:Phosphorylates specifically ribosomal protein S6 in response to insulin or several classes of mitogens.,similarity:Belongs to the protein kinase superfamily.,similarity:Belongs to the protein kinase superfamily. AGC Ser/Thr protein kinase family. S6 kinase subfamily.,similarity:Contains 1 AGC-kinase C-terminal domain.,similarity:Contains 1 protein kinase domain.,subunit:Interacts with PPP1R9A/neurabin-1.,tissue specificity:Widely expressed.,
Subcellular Location :	Cell junction, synapse, synaptosome . Mitochondrion outer membrane. Mitochondrion. Colocalizes with URI1 at mitochondrion.; [Isoform Alpha I]: Nucleus. Cytoplasm.; [Isoform Alpha II]: Cytoplasm.

Expression : Widely expressed.

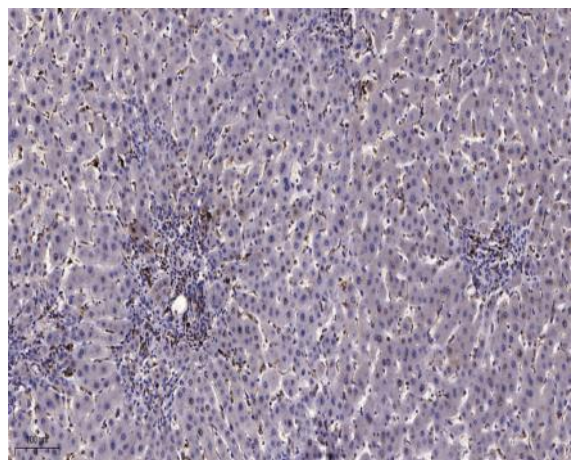
Sort : 11533

No4 : 1

Products Images



Western blot analysis of lysates from K562 cells, NIH/3T3 cells and COLO205 cells, using p70 S6 Kinase (Phospho-Ser411) Antibody. The lane on the right is blocked with the phospho peptide.



Immunohistochemical analysis of paraffin-embedded human liver cancer. 1, Antibody was diluted at 1:200(4° overnight). 2, Tris-EDTA,pH9.0 was used for antigen retrieval. 3,Secondary antibody was diluted at 1:200(room temperature, 45min).