

## PKC $\epsilon$ (phospho Ser729) Polyclonal Antibody

<b>Catalog No :</b>	YP0340
<b>Reactivity :</b>	Human;Mouse;Rat
<b>Applications :</b>	WB;ELISA;IHC
<b>Target :</b>	PKC $\epsilon$
<b>Fields :</b>	>>cGMP-PKG signaling pathway;>>Sphingolipid signaling pathway;>>Vascular smooth muscle contraction;>>Apelin signaling pathway;>>Tight junction;>>Fc gamma R-mediated phagocytosis;>>Inflammatory mediator regulation of TRP channels;>>Aldosterone synthesis and secretion;>>Type II diabetes mellitus;>>Insulin resistance;>>AGE-RAGE signaling pathway in diabetic complications;>>Shigellosis;>>MicroRNAs in cancer
<b>Gene Name :</b>	PRKCE
<b>Protein Name :</b>	Protein kinase C epsilon type
<b>Human Gene Id :</b>	5581
<b>Human Swiss Prot No :</b>	Q02156
<b>Mouse Gene Id :</b>	18754
<b>Mouse Swiss Prot No :</b>	P16054
<b>Rat Gene Id :</b>	29340
<b>Rat Swiss Prot No :</b>	P09216
<b>Immunogen :</b>	The antiserum was produced against synthesized peptide derived from human PKC epsilon around the phosphorylation site of Ser729. AA range:688-737
<b>Specificity :</b>	Phospho-PKC $\epsilon$ (S729) Polyclonal Antibody detects endogenous levels of PKC $\epsilon$ protein only when phosphorylated at S729.
<b>Formulation :</b>	Liquid in PBS containing 50% glycerol, 0.5% BSA and 0.02% sodium azide.

<b>Source :</b>	Polyclonal, Rabbit,IgG
<b>Dilution :</b>	WB 1:500-2000;IHC 1:50-300; ELISA 2000-20000
<b>Purification :</b>	The antibody was affinity-purified from rabbit antiserum by affinity-chromatography using epitope-specific immunogen.
<b>Concentration :</b>	1 mg/ml
<b>Storage Stability :</b>	-15°C to -25°C/1 year(Do not lower than -25°C)
<b>Observed Band :</b>	83kD
<b>Cell Pathway :</b>	Regulation_Microtubule; Regulation of Actin Dynamics; Stem cell pathway; Insulin Receptor; B Cell Receptor; AMPK
<b>Background :</b>	protein kinase C epsilon(PRKCE) Homo sapiens Protein kinase C (PKC) is a family of serine- and threonine-specific protein kinases that can be activated by calcium and the second messenger diacylglycerol. PKC family members phosphorylate a wide variety of protein targets and are known to be involved in diverse cellular signaling pathways. PKC family members also serve as major receptors for phorbol esters, a class of tumor promoters. Each member of the PKC family has a specific expression profile and is believed to play a distinct role in cells. The protein encoded by this gene is one of the PKC family members. This kinase has been shown to be involved in many different cellular functions, such as neuron channel activation, apoptosis, cardioprotection from ischemia, heat shock response, as well as insulin exocytosis. Knockout studies in mice suggest that this kinase is important for lipopolysaccharide (LPS)-mediated signaling in activated macro
<b>Function :</b>	catalytic activity:ATP + a protein = ADP + a phosphoprotein.,domain:The C1 domain, containing the phorbol ester/DAG-type region 1 (C1A) and 2 (C1B), is the diacylglycerol sensor and the C2 domain is a non-calcium binding domain.,enzyme regulation:Three specific sites; Thr-566 (activation loop of the kinase domain), Thr-710 (turn motif) and Ser-729 (hydrophobic region), need to be phosphorylated for its full activation.,function:PKC is activated by diacylglycerol which in turn phosphorylates a range of cellular proteins. PKC also serves as the receptor for phorbol esters, a class of tumor promoters.,function:This is calcium-independent, phospholipid-dependent, serine- and threonine-specific enzyme.,PTM:Phosphorylation on Thr-566 by PDPK1 triggers autophosphorylation on Ser-729.,similarity:Belongs to the protein kinase superfamily. AGC Ser/Thr protein kinase family. PKC subfamily.,similari
<b>Subcellular Location :</b>	Cytoplasm . Cytoplasm, cytoskeleton . Cell membrane . Cytoplasm, perinuclear region . Nucleus . Translocated to plasma membrane in epithelial cells stimulated by HGF (PubMed:17603037). Associated with the Golgi at the perinuclear site in pre-passage fibroblasts (By similarity). In passaging cells, translocated to the cell

periphery (By similarity). Translocated to the nucleus in PMA-treated cells (By similarity). .

**Expression :** Expressed in cumulus cells (at protein level).

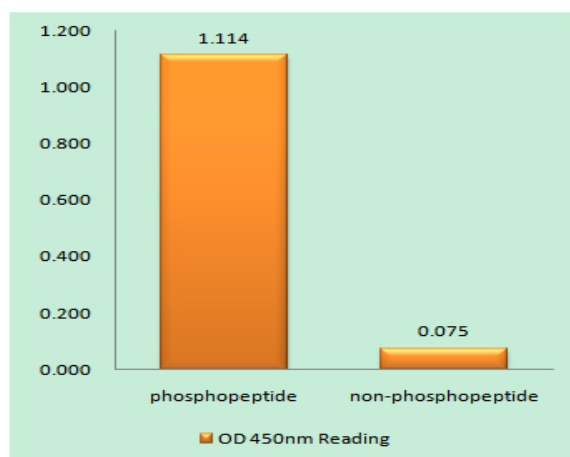
**Tag :** orthogonal,hot

**Sort :** 12757

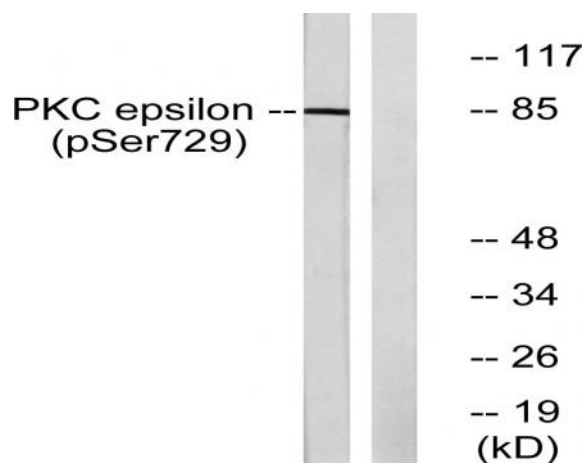
**Host :** Rabbit

**Modifications :** Phospho

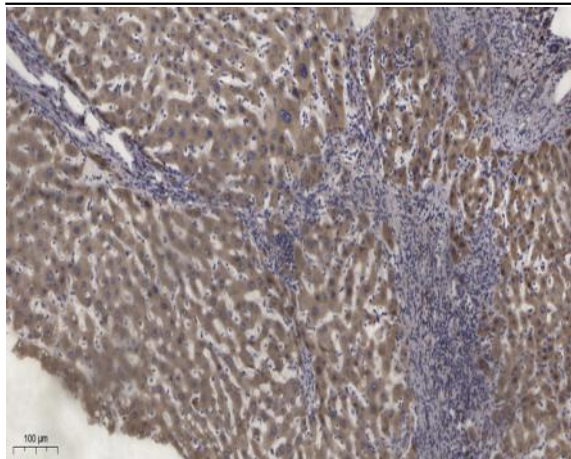
## Products Images



Enzyme-Linked Immunosorbent Assay (Phospho-ELISA) for Immunogen Phosphopeptide (Phospho-left) and Non-Phosphopeptide (Phospho-right), using PKC epsilon (Phospho-Ser729) Antibody



Western blot analysis of lysates from HeLa cells treated with PMA 125ng/ml 30', using PKC epsilon (Phospho-Ser729) Antibody. The lane on the right is blocked with the phosphopeptide.



Immunohistochemical analysis of paraffin-embedded human liver cancer. 1, Antibody was diluted at 1:200(4° overnight). 2, Tris-EDTA,pH9.0 was used for antigen retrieval. 3,Secondary antibody was diluted at 1:200(room temperature, 45min).