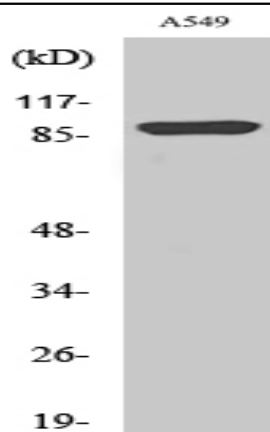


## ICAM-1 (phospho Tyr512) Polyclonal Antibody

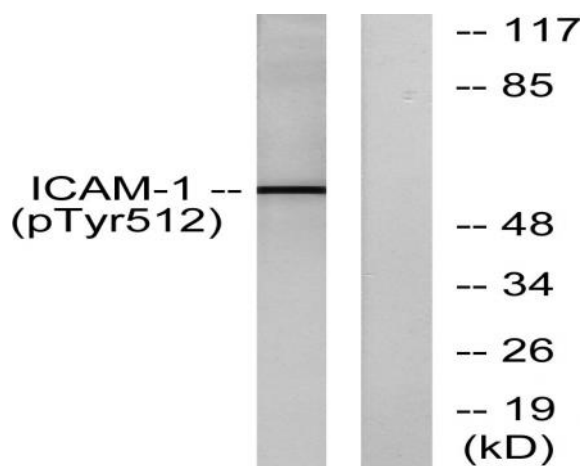
<b>Catalog No :</b>	YP0137
<b>Reactivity :</b>	Human;Rat;Mouse;
<b>Applications :</b>	WB;ELISA
<b>Target :</b>	ICAM-1
<b>Fields :</b>	>>NF-kappa B signaling pathway;>>Cell adhesion molecules;>>Natural killer cell mediated cytotoxicity;>>TNF signaling pathway;>>Leukocyte transendothelial migration;>>AGE-RAGE signaling pathway in diabetic complications;>>African trypanosomiasis;>>Malaria;>>Staphylococcus aureus infection;>>Influenza A;>>Human T-cell leukemia virus 1 infection;>>Kaposi sarcoma-associated herpesvirus infection;>>Epstein-Barr virus infection;>>Rheumatoid arthritis;>>Viral myocarditis;>>Lipid and atherosclerosis;>>Fluid shear stress and atherosclerosis
<b>Gene Name :</b>	ICAM1
<b>Protein Name :</b>	Intercellular adhesion molecule 1
<b>Human Gene Id :</b>	3383
<b>Human Swiss Prot No :</b>	P05362
<b>Mouse Swiss Prot No :</b>	P13597
<b>Immunogen :</b>	The antiserum was produced against synthesized peptide derived from human ICAM-1 around the phosphorylation site of Tyr512. AA range:479-528
<b>Specificity :</b>	Phospho-ICAM-1 (Y512) Polyclonal Antibody detects endogenous levels of ICAM-1 protein only when phosphorylated at Y512.
<b>Formulation :</b>	Liquid in PBS containing 50% glycerol, 0.5% BSA and 0.02% sodium azide.
<b>Source :</b>	Polyclonal, Rabbit,IgG
<b>Dilution :</b>	WB 1:500 - 1:2000. ELISA: 1:40000. Not yet tested in other applications.

<b>Purification :</b>	The antibody was affinity-purified from rabbit antiserum by affinity-chromatography using epitope-specific immunogen.
<b>Concentration :</b>	1 mg/ml
<b>Storage Stability :</b>	-15°C to -25°C/1 year(Do not lower than -25°C)
<b>Observed Band :</b>	57kD
<b>Cell Pathway :</b>	Cell adhesion molecules (CAMs);Natural killer cell mediated cytotoxicity;Leukocyte transendothelial migration;Viral myocarditis;
<b>Background :</b>	This gene encodes a cell surface glycoprotein which is typically expressed on endothelial cells and cells of the immune system. It binds to integrins of type CD11a / CD18, or CD11b / CD18 and is also exploited by Rhinovirus as a receptor. [provided by RefSeq, Jul 2008],
<b>Function :</b>	function:ICAM proteins are ligands for the leukocyte adhesion protein LFA-1 (integrin alpha-L/beta-2). During leukocyte trans-endothelial migration, ICAM1 engagement promotes the assembly of endothelial apical cups through SGEF and RHOG activation. In case of rhinovirus infection acts as a cellular receptor for the virus.,online information:ICAM-1,online information:Icosahedral capsid structure,online information:Intercellular adhesion molecule entry,polymorphism:Homozygotes with ICAM1-Kalifi Met-56 seem to have an increased risk for cerebral malaria.,PTM:Monoubiquitinated, which is promoted by MARCH9 and leads to endocytosis.,similarity:Belongs to the immunoglobulin superfamily. ICAM family.,similarity:Contains 5 Ig-like C2-type (immunoglobulin-like) domains.,subunit:Homodimer (Probable). Interacts with human herpesvirus 8 MIR2 protein (Probable). Interacts with MUC1 and promotes cell a
<b>Subcellular Location :</b>	Membrane; Single-pass type I membrane protein.
<b>Expression :</b>	Blood,Kidney,Liver,Melanoma,Plasma,
<b>Tag :</b>	orthogonal
<b>Sort :</b>	8298
<b>No4 :</b>	1

## Products Images



Western Blot analysis of various cells using Phospho-ICAM-1 (Y512) Polyclonal Antibody diluted at 1:500



Western blot analysis of lysates from HeLa cells treated with TNF-alpha 20ng/ml 5', using ICAM-1 (Phospho-Tyr512) Antibody. The lane on the right is blocked with the phospho peptide.