

Histone H3 (phospho Ser10) Polyclonal Antibody

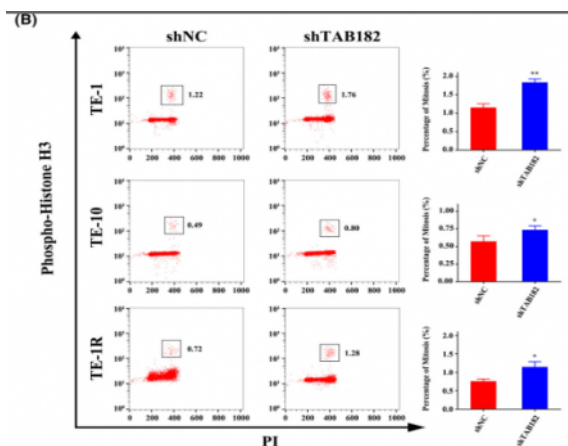
Catalog No :	YP0129
Reactivity :	Human;Mouse;Rat;Drosophila melanogaster
Applications :	WB;IHC;IHC-f;Flow Cyt;ICC;IF;ELISA
Target :	Histone H3
Fields :	>>Neutrophil extracellular trap formation;>>Alcoholism;>>Shigellosis;>>Transcriptional misregulation in cancer;>>Systemic lupus erythematosus
Gene Name :	HIST1H3A
Protein Name :	Histone H3.1
Human Gene Id :	8350/8351/8352/8353/8354/8355/8356/8357/8358/8968
Human Swiss Prot No :	P68431/Q71DI3/P84243
Mouse Gene Id :	319152/15077/15078
Rat Gene Id :	291159/100361558
Rat Swiss Prot No :	Q6LED0/P84245
Immunogen :	The antiserum was produced against synthesized peptide derived from human Histone H3.1 around the phosphorylation site of Ser10. AA range:1-50
Specificity :	Phospho-Histone H3 (S10) Polyclonal Antibody detects endogenous levels of Histone H3 protein only when phosphorylated at S10.
Formulation :	Liquid in PBS containing 50% glycerol, 0.5% BSA and 0.02% sodium azide.
Source :	Polyclonal, Rabbit,IgG
Dilution :	WB 1:500 - 1:2000. IHC 1:100 - 1:300. ICC:IF 1:200 - 1:1000. ELISA: 1:10000. IHC-f,Flow Cyt 1:500

Purification :	The antibody was affinity-purified from rabbit antiserum by affinity-chromatography using epitope-specific immunogen.
Concentration :	1 mg/ml
Storage Stability :	-15°C to -25°C/1 year(Do not lower than -25°C)
Observed Band :	15kD
Cell Pathway :	Protein_Acetylation
Background :	<p>Histones are basic nuclear proteins that are responsible for the nucleosome structure of the chromosomal fiber in eukaryotes. This structure consists of approximately 146 bp of DNA wrapped around a nucleosome, an octamer composed of pairs of each of the four core histones (H2A, H2B, H3, and H4). The chromatin fiber is further compacted through the interaction of a linker histone, H1, with the DNA between the nucleosomes to form higher order chromatin structures. This gene is intronless and encodes a replication-dependent histone that is a member of the histone H3 family. Transcripts from this gene lack polyA tails; instead, they contain a palindromic termination element. This gene is found in the large histone gene cluster on chromosome 6p22-p21.3. [provided by RefSeq, Aug 2015],</p>
Function :	<p>caution:Was originally (PubMed:2587222) thought to originate from mouse.,developmental stage:Expressed during S phase, then expression strongly decreases as cell division slows down during the process of differentiation.,function:Core component of nucleosome. Nucleosomes wrap and compact DNA into chromatin, limiting DNA accessibility to the cellular machineries which require DNA as a template. Histones thereby play a central role in transcription regulation, DNA repair, DNA replication and chromosomal stability. DNA accessibility is regulated via a complex set of post-translational modifications of histones, also called histone code, and nucleosome remodeling.,mass spectrometry:Monoisotopic with N-acetylserine PubMed:16457589,miscellaneous:This histone is only present in mammals and is enriched in acetylation of Lys-15 and dimethylation of Lys-10 (H3K9me2).,PTM:Acetylation is generally I</p>
Subcellular Location :	Nucleus. Chromosome.
Expression :	Blood,Epithelium,Kidney,Lung,Ovary,Spleen,Uterus,
Tag :	orthogonal,hot
Sort :	299
No2 :	9706S

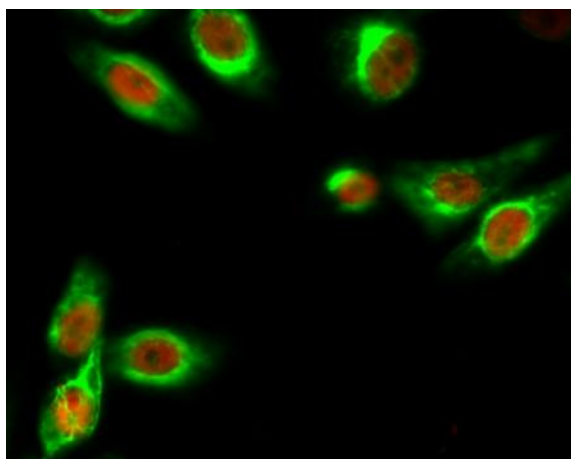
No3 : ab5176

No4 : 1

Products Images

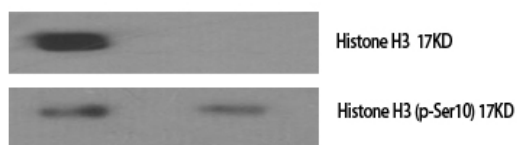


Cao, Yuandong, et al. "Elevated TAB182 enhances the radioresistance of esophageal squamous cell carcinoma through G2-M checkpoint modulation." *Cancer Medicine* 10.9 (2021): 3101-3112.

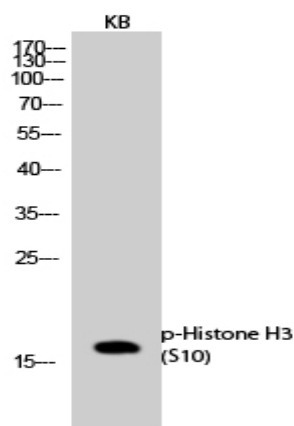


Immunofluorescence analysis of HeLa cell. 1, Histone H3 (phospho Ser10) Polyclonal Antibody (red) was diluted at 1:200 (4° overnight). β-Tubulin Monoclonal Antibody (5G3) (green) was diluted at 1:200 (4° overnight). 2, Goat Anti Rabbit Alexa Fluor 594 Catalog: RS3611 was diluted at 1:1000 (room temperature, 50min). Goat Anti Mouse Alexa Fluor 488 Catalog: RS3208 was diluted at 1:1000 (room temperature, 50min).

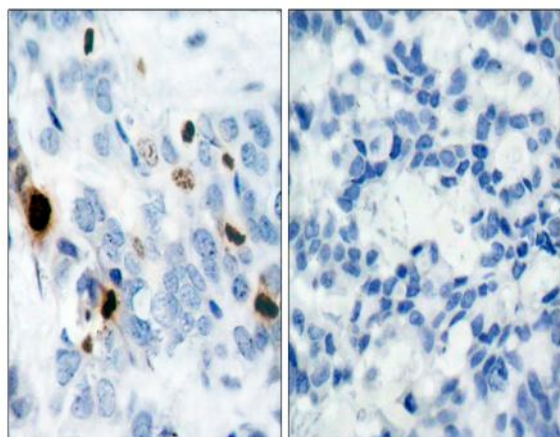
Western Blot analysis of various cells using Phospho-Histone H3 (S10) Polyclonal Antibody. Cells nucleus extracted by Minute TM Cytoplasmic and Nuclear Fractionation kit (SC-003, Invent biotech, MN, USA).



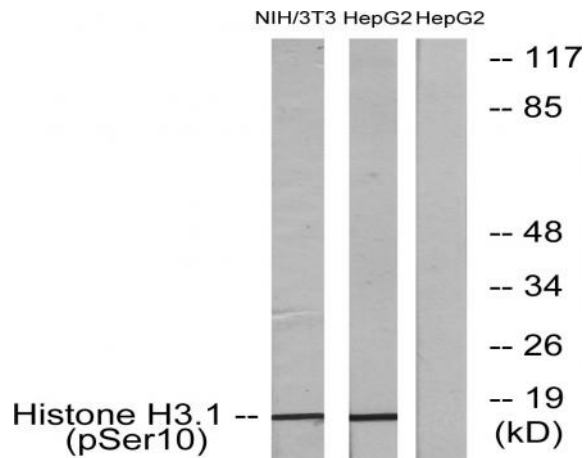
-	+	- phospho-peptide
-	-	+ non-phospho-peptide
+	+	+ Paclitaxel (1uM, 24hours)



Western Blot analysis of KB cells using Phospho-Histone H3 (S10) Polyclonal Antibody cells nucleus extracted by Minute TM Cytoplasmic and Nuclear Fractionation kit (SC-003, Inventbiotech, MN, USA).



Immunohistochemistry analysis of paraffin-embedded human breast carcinoma, using Histone H3.1 (Phospho-Ser10) Antibody. The picture on the right is blocked with the phospho peptide.



Western blot analysis of lysates from NIH/3T3 cells and HepG2 cells, using Histone H3.1 (Phospho-Ser10) Antibody. The lane on the right is blocked with the phospho peptide.