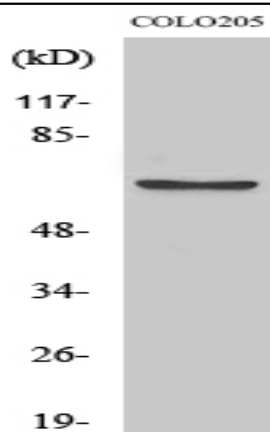


## FoxO4 (phospho Ser197) Polyclonal Antibody

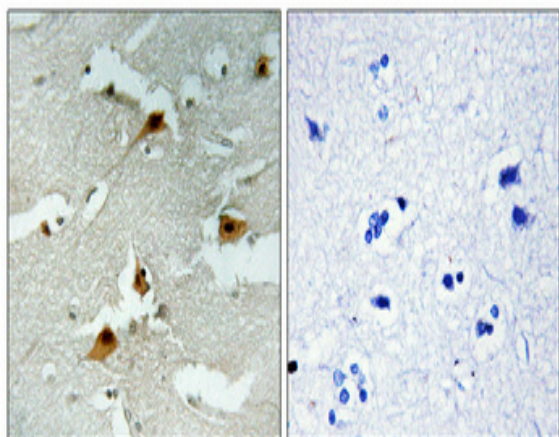
<b>Catalog No :</b>	YP0116
<b>Reactivity :</b>	Human;Mouse
<b>Applications :</b>	WB;IHC;IF;ELISA
<b>Target :</b>	FoxO4
<b>Fields :</b>	>>Ras signaling pathway;>>FoxO signaling pathway;>>Shigellosis
<b>Gene Name :</b>	FOXO4
<b>Protein Name :</b>	Forkhead box protein O4
<b>Human Gene Id :</b>	4303
<b>Human Swiss Prot No :</b>	P98177
<b>Mouse Gene Id :</b>	54601
<b>Mouse Swiss Prot No :</b>	Q9WVH3
<b>Immunogen :</b>	The antiserum was produced against synthesized peptide derived from human AFX around the phosphorylation site of Ser197. AA range:164-213
<b>Specificity :</b>	Phospho-FoxO4 (S197) Polyclonal Antibody detects endogenous levels of FoxO4 protein only when phosphorylated at S197.
<b>Formulation :</b>	Liquid in PBS containing 50% glycerol, 0.5% BSA and 0.02% sodium azide.
<b>Source :</b>	Polyclonal, Rabbit,IgG
<b>Dilution :</b>	WB 1:500 - 1:2000. IHC 1:100 - 1:300. ELISA: 1:20000.. IF 1:50-200
<b>Purification :</b>	The antibody was affinity-purified from rabbit antiserum by affinity-chromatography using epitope-specific immunogen.
<b>Concentration :</b>	1 mg/ml

<b>Storage Stability :</b>	-15°C to -25°C/1 year(Do not lower than -25°C)
<b>Observed Band :</b>	70kD
<b>Cell Pathway :</b>	Insulin Receptor; B Cell Receptor; Protein_Acetylation
<b>Background :</b>	<p>This gene encodes a member of the O class of winged helix/forkhead transcription factor family. Proteins encoded by this class are regulated by factors involved in growth and differentiation indicating they play a role in these processes. A translocation involving this gene on chromosome X and the homolog of the Drosophila trithorax gene, encoding a DNA binding protein, located on chromosome 11 is associated with leukemia. Multiple transcript variants encoding different isoforms have been found for this gene. [provided by RefSeq, Jan 2010],</p>
<b>Function :</b>	<p>disease:A chromosomal aberration involving FOXO4 is found in acute leukemias. Translocation t(X;11)(q13;q23) with MLL/HRX. The result is a rogue activator protein.,function:Transcription factor involved in the regulation of the insulin signaling pathway. Binds to insulin-response elements (IREs) and can activate transcription of IGFBP1. Down-regulates expression of HIF1A and suppresses hypoxia-induced transcriptional activation of HIF1A-modulated genes. Also involved in negative regulation of the cell cycle.,pharmaceutical:A constitutively active FOXO4 mutant where phosphorylation sites Thr-32, Ser-187 and Ser-262 have been mutated to alanine may have therapeutic potential in ERBB2/HER2-overexpressing cancers as it inhibits ERBB2-mediated cell survival, transformation and tumorigenicity.,PTM:Acetylation by CBP, which is induced by peroxidase stress, inhibits transcriptional activity. Dea</p>
<b>Subcellular Location :</b>	<p>Cytoplasm. Nucleus. When phosphorylated, translocated from nucleus to cytoplasm. Dephosphorylation triggers nuclear translocation. Monoubiquitination increases nuclear localization. When deubiquitinated, translocated from nucleus to cytoplasm.</p>
<b>Expression :</b>	<p>Heart, brain, placenta, lung, liver, skeletal muscle, kidney and pancreas. Isoform zeta is most abundant in the liver, kidney, and pancreas.</p>
<b>Tag :</b>	orthogonal
<b>Sort :</b>	6265
<b>No4 :</b>	1

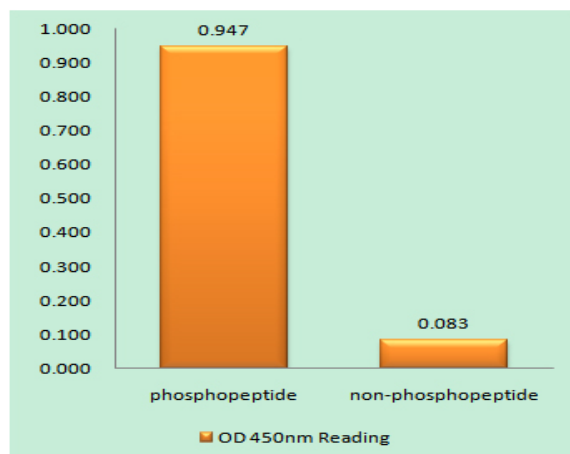
## Products Images



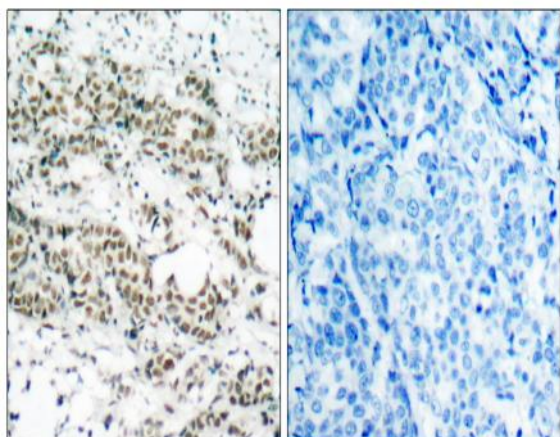
Western Blot analysis of various cells using Phospho-FoxO4 (S197) Polyclonal Antibody



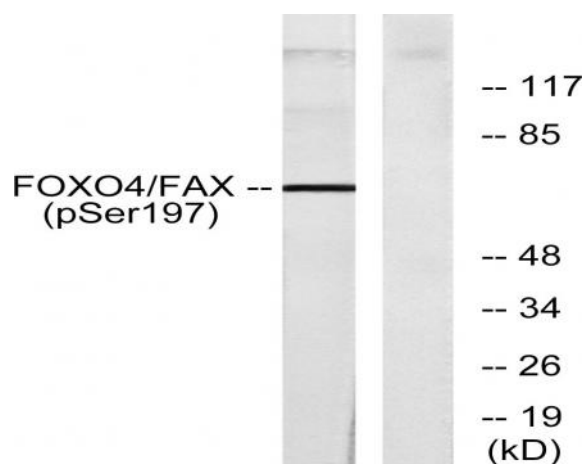
Immunohistochemical analysis of paraffin-embedded Human brain. Antibody was diluted at 1:100(4° overnight). High-pressure and temperature Tris-EDTA,pH8.0 was used for antigen retrieval. Negative contrl (right) obtained from antibody was pre-absorbed by immunogen peptide.



Enzyme-Linked Immunosorbent Assay (Phospho-ELISA) for Immunogen Phosphopeptide (Phospho-left) and Non-Phosphopeptide (Phospho-right), using AFX (Phospho-Ser197) Antibody



Immunohistochemistry analysis of paraffin-embedded human breast carcinoma, using AFX (Phospho-Ser197) Antibody. The picture on the right is blocked with the phospho peptide.



Western blot analysis of lysates from 293 cells treated with serum, using AFX (Phospho-Ser197) Antibody. The lane on the right is blocked with the phospho peptide.