

PPGB (20k, Cleaved-Met327) rabbit pAb

Catalog No :	YC0184
Reactivity :	Human;Mouse
Applications :	WB;IHC
Target :	PPGB
Fields :	>>Lysosome;>>Renin-angiotensin system
Gene Name :	CTSA PPGB
Protein Name :	PPGB (20k, Cleaved-Met327)
Human Gene Id :	5476
Human Swiss Prot No :	P10619
Mouse Gene Id :	19025
Mouse Swiss Prot No :	P16675
Immunogen :	Synthesized peptide derived from human PPGB (20k, Cleaved-Met327)
Specificity :	This antibody detects endogenous levels of Human,Mouse PPGB (20k, Cleaved-Met327, protein was cleaved amino acid sequence between 326-327)
Formulation :	Liquid in PBS containing 50% glycerol, 0.5% BSA and 0.02% sodium azide.
Source :	Polyclonal, Rabbit,IgG
Dilution :	WB 1:500-2000;IHC 1:50-300
Purification :	The antibody was affinity-purified from rabbit serum by affinity-chromatography using specific immunogen.
Concentration :	1 mg/ml

Storage Stability : -15°C to -25°C/1 year (Do not lower than -25°C)

Observed Band : 20 52kD

Background : catalytic activity:Release of a C-terminal amino acid with broad specificity.,disease:Defects in CTSA are the cause of galactosialidosis [MIM:256540]. It is an autosomal recessive disease.,function:Protective protein appears to be essential for both the activity of beta-galactosidase and neuraminidase, it associates with these enzymes and exerts a protective function necessary for their stability and activity. This protein is also a carboxypeptidase and can deamidate tachykinins.,similarity:Belongs to the peptidase S10 family.,subunit:Heterodimer of a 32 kDa chain and a 20 kDa chain; disulfide-linked.,

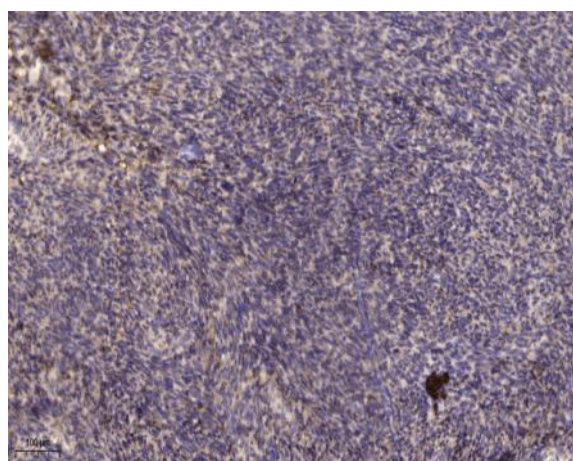
Function : proteolysis, intracellular protein transport, protein localization, protein transport, cellular protein localization,establishment of protein localization, intracellular transport, cellular macromolecule localization,

Subcellular Location : Lysosome.

Sort : 12951

No4 : 1

Products Images



Immunohistochemical analysis of paraffin-embedded human uterus. 1, Antibody was diluted at 1:200(4° overnight). 2, Tris-EDTA,pH9.0 was used for antigen retrieval. 3,Secondary antibody was diluted at 1:200(room temperature, 45min).