

ITGAE (light chain, Cleaved-Arg177) rabbit pAb

Catalog No :	YC0173
Reactivity :	Human;Rat;Mouse;
Applications :	WB;IHC
Target :	ITGAE
Fields :	>>Regulation of actin cytoskeleton
Gene Name :	ITGAE
Protein Name :	ITGAE (light chain, Cleaved-Arg177)
Human Gene Id :	3682
Human Swiss Prot No :	P38570
Mouse Gene Id :	16407
Mouse Swiss Prot No :	Q60677
Immunogen :	Synthesized peptide derived from human ITGAE (light chain, Cleaved-Arg177)
Specificity :	This antibody detects endogenous levels of Human ITGAE (light chain, Cleaved-Arg177, protein was cleaved amino acid sequence between 177-178)
Formulation :	Liquid in PBS containing 50% glycerol, 0.5% BSA and 0.02% sodium azide.
Source :	Polyclonal, Rabbit,IgG
Dilution :	WB 1:500-2000;IHC 1:50-300
Purification :	The antibody was affinity-purified from rabbit serum by affinity-chromatography using specific immunogen.
Concentration :	1 mg/ml

Storage Stability : -15°C to -25°C/1 year (Do not lower than -25°C)

Observed Band : 17 128kD

Background : integrin subunit alpha E (ITGAE) Homo sapiens Integrins are heterodimeric integral membrane proteins composed of an alpha chain and a beta chain. This gene encodes an I-domain-containing alpha integrin that undergoes post-translational cleavage in the extracellular domain, yielding disulfide-linked heavy and light chains. In combination with the beta 7 integrin, this protein forms the E-cadherin binding integrin known as the human mucosal lymphocyte-1 antigen. This protein is preferentially expressed in human intestinal intraepithelial lymphocytes (IEL), and in addition to a role in adhesion, it may serve as an accessory molecule for IEL activation. [provided by RefSeq, Jul 2008],

Function : domain: The integrin I-domain (insert) is a VWFA domain. Integrins with I-domains do not undergo protease cleavage., function: Integrin alpha-E/beta-7 is a receptor for E-cadherin. It mediates adhesion of intra-epithelial T-lymphocytes to epithelial cell monolayers., induction: Integrin alpha-E/beta-7 is induced by TGFB1., similarity: Belongs to the integrin alpha chain family., similarity: Contains 1 VWFA domain., similarity: Contains 5 FG-GAP repeats., subunit: Heterodimer of an alpha and a beta subunit. The alpha subunit is composed of an heavy and a light chains linked by a disulfide bond. Alpha-E associates with beta-7., tissue specificity: Expressed on a subclass of T-lymphocytes known as intra-epithelial lymphocytes which are located between mucosal epithelial cells.,

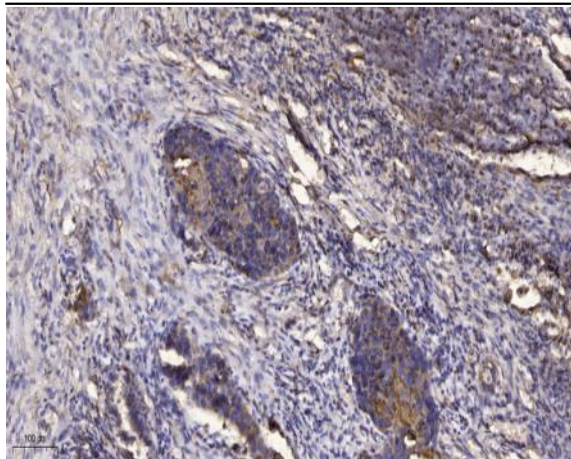
Subcellular Location : Membrane; Single-pass type I membrane protein.

Expression : Expressed on a subclass of T-lymphocytes known as intra-epithelial lymphocytes which are located between mucosal epithelial cells.

Sort : 8725

No4 : 1

Products Images



Immunohistochemical analysis of paraffin-embedded human Squamous cell carcinoma of lung. 1, Antibody was diluted at 1:200(4° overnight). 2, Tris-EDTA,pH9.0 was used for antigen retrieval. 3,Secondary antibody was diluted at 1:200(room temperature, 45min).