

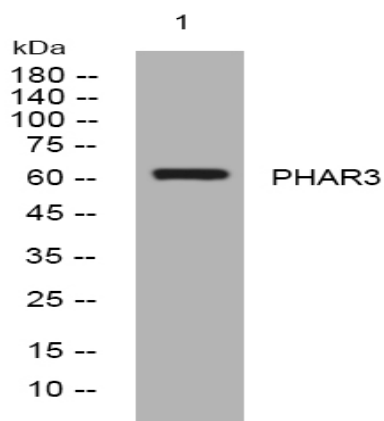
## PHAR3 rabbit pAb

<b>Catalog No :</b>	YT7672
<b>Reactivity :</b>	Human;Mouse;Rat
<b>Applications :</b>	WB;ELISA;IHC
<b>Target :</b>	PHAR3
<b>Gene Name :</b>	PHACTR3 C20orf101 SCAPIN1
<b>Protein Name :</b>	PHAR3
<b>Human Gene Id :</b>	116154
<b>Human Swiss Prot No :</b>	Q96KR7
<b>Mouse Gene Id :</b>	74189
<b>Mouse Swiss Prot No :</b>	Q8BYK5
<b>Rat Gene Id :</b>	362284
<b>Rat Swiss Prot No :</b>	Q6RFY2
<b>Immunogen :</b>	Synthesized peptide derived from human PHAR3 AA range: 260-310
<b>Specificity :</b>	This antibody detects endogenous levels of PHAR3 at Human/Mouse/Rat
<b>Formulation :</b>	Liquid in PBS containing 50% glycerol, 0.5% BSA and 0.02% sodium azide.
<b>Source :</b>	Polyclonal, Rabbit,IgG
<b>Dilution :</b>	WB 1:500-2000;IHC 1:50-300; ELISA 2000-20000
<b>Purification :</b>	The antibody was affinity-purified from rabbit antiserum by affinity-chromatography using epitope-specific immunogen.

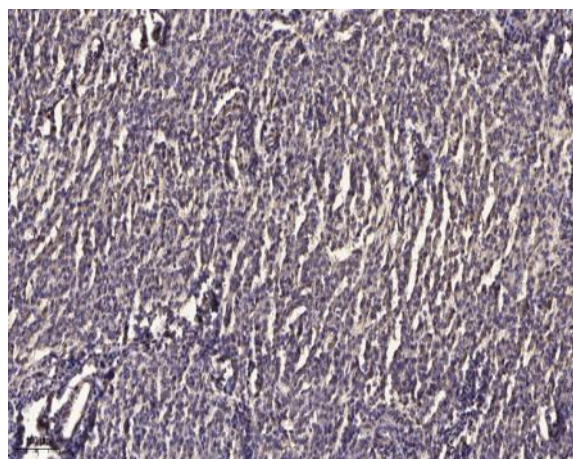
<b>Concentration :</b>	1 mg/ml
<b>Storage Stability :</b>	-15°C to -25°C/1 year(Do not lower than -25°C)
<b>Molecularweight :</b>	61kD
<b>Background :</b>	<p>This gene encodes a member of the phosphatase and actin regulator protein family. The encoded protein is associated with the nuclear scaffold in proliferating cells, and binds to actin and the catalytic subunit of protein phosphatase-1, suggesting that it functions as a regulatory subunit of protein phosphatase-1. Alternative splicing results in multiple transcript variants. [provided by RefSeq, Jul 2013],</p>
<b>Function :</b>	<p>induction:Down-regulated in HL-60 leukemia cells by RA, PMA and dimethyl sulfoxide.,similarity:Belongs to the phosphatase and actin regulator family.,similarity:Contains 4 RPEL repeats.,subcellular location:Localized to the nuclear matrix-intermediate filament scaffold. Isoform 2 is also found in some cytoplasmic extensions.,subunit:Binds actin and PPP1CA; thus inhibiting the protein phosphatase 1 (PP1) activity.,tissue specificity:Abundantly expressed in brain. Also found in several tumors such as lung carcinomas, nervous tumors and HL-60 leukemia cells. Isoform 3 is the major form in U937, GOTO and HL-60 leukemia cells.,</p>
<b>Subcellular Location :</b>	<p>Nucleus matrix. Localized to the nuclear matrix-intermediate filament scaffold. Isoform 2 is also found in some cytoplasmic extensions.</p>
<b>Expression :</b>	<p>Abundantly expressed in brain. Also found in several tumors such as lung carcinomas, nervous tumors and HL-60 leukemia cells. Isoform 3 is the major form in U-937, GOTO and HL-60 leukemia cells.</p>
<b>Sort :</b>	11880

---

## Products Images



Western blot analysis of lysates from MCF-7 cells, primary antibody was diluted at 1:1000, 4° over night



Immunohistochemical analysis of paraffin-embedded human meningioma. 1, Antibody was diluted at 1:200(4° overnight). 2, Tris-EDTA,pH9.0 was used for antigen retrieval. 3,Secondary antibody was diluted at 1:200(room temperature, 45min).