

LY65C rabbit pAb

Catalog No :	YT7655
Reactivity :	Human;Mouse;Rat
Applications :	WB
Target :	LY65C
Gene Name :	LY6G5C C6orf20 G5C NG33
Protein Name :	LY65C
Human Gene Id :	80741
Human Swiss Prot No :	Q5SRR4
Mouse Gene Id :	114652
Mouse Swiss Prot No :	Q8K1T5
Rat Swiss Prot No :	Q8CHN2
Immunogen :	Synthesized peptide derived from human LY65C AA range: 66-116
Specificity :	This antibody detects endogenous levels of LY65C at Human/Mouse/Rat
Formulation :	Liquid in PBS containing 50% glycerol, 0.5% BSA and 0.02% sodium azide.
Source :	Polyclonal, Rabbit,IgG
Dilution :	WB 1:500-2000
Purification :	The antibody was affinity-purified from rabbit antiserum by affinity-chromatography using epitope-specific immunogen.
Concentration :	1 mg/ml

Storage Stability : -15°C to -25°C/1 year (Do not lower than -25°C)

Molecularweight : 17kD

Background : LY6G5C belongs to a cluster of leukocyte antigen-6 (LY6) genes located in the major histocompatibility complex (MHC) class III region on chromosome 6. Members of the LY6 superfamily typically contain 70 to 80 amino acids, including 8 to 10 cysteines. Most LY6 proteins are attached to the cell surface by a glycosylphosphatidylinositol (GPI) anchor that is directly involved in signal transduction (Mallya et al., 2002 [PubMed 12079290]). [supplied by OMIM, Mar 2008],

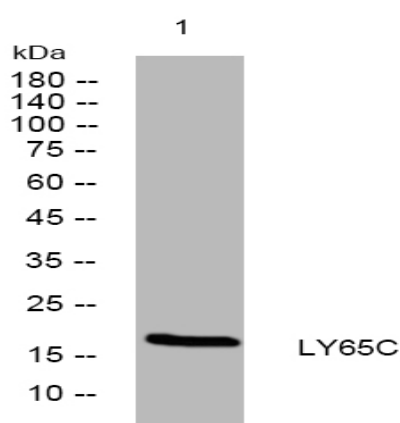
Function : caution: It is uncertain whether Met-1 or Met-4 is the initiator., function: May have a role in hematopoietic cell differentiation., PTM: N-glycosylated., similarity: Contains 1 UPAR/Ly6 domain., subunit: Forms oligomers., tissue specificity: Detected in T-cell lines and fetal and adult lung.,

Subcellular Location : Secreted .

Expression : Detected in T-cell lines and fetal and adult lung.

Sort : 9298

Products Images



Western blot analysis of lysates from U2OS cells, primary antibody was diluted at 1:1000, 4° over night