

ZFP57 rabbit pAb

Catalog No :	YT7618
Reactivity :	Human;Mouse;Rat
Applications :	WB
Target :	ZFP57
Fields :	>>Herpes simplex virus 1 infection
Gene Name :	ZFP57 C6orf40 ZNF698
Protein Name :	ZFP57
Human Gene Id :	346171
Human Swiss Prot No :	Q9NU63
Mouse Gene Id :	22715
Mouse Swiss Prot No :	Q8C6P8
Rat Gene Id :	361783
Rat Swiss Prot No :	A0JPK3
Immunogen :	Synthesized peptide derived from human ZFP57 AA range: 373-423
Specificity :	This antibody detects endogenous levels of ZFP57 at Human/Mouse/Rat
Formulation :	Liquid in PBS containing 50% glycerol, 0.5% BSA and 0.02% sodium azide.
Source :	Polyclonal, Rabbit,IgG
Dilution :	WB 1:500-2000
Purification :	The antibody was affinity-purified from rabbit antiserum by affinity-

chromatography using epitope-specific immunogen.

Concentration : 1 mg/ml

Storage Stability : -15°C to -25°C/1 year (Do not lower than -25°C)

Molecularweight : 50kD

Background : The protein encoded by this gene is a zinc finger protein containing a KRAB domain. Studies in mouse suggest that this protein may function as a transcriptional repressor. Mutations in this gene have been associated with transient neonatal diabetes mellitus type 1 (TNDM1). [provided by RefSeq, Sep 2009],

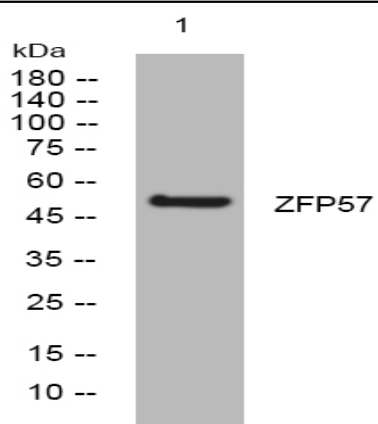
Function : disease: Defects in ZFP57 are the cause of transient neonatal diabetes mellitus type 1 (TNDM1) [MIM:601410]. Neonatal diabetes is a form of diabetes mellitus defined by the onset of mild-to-severe hyperglycemia within the first months of life. In about half of the neonates, diabetes is transient and resolves at a median age of 3 months, whereas the rest have a permanent form of diabetes. The major cause of TNDM1 is aberrant expression of imprinted genes at chromosome 6q24, associated in 20% of cases with DNA hypomethylation at the transient neonatal diabetes differentially methylated region (DMR), which lies within the imprinted promoter of the PLAGL1 gene. Over 50% of individuals with transient neonatal diabetes and hypomethylation at 6q24 also show mosaic DNA hypomethylation at other imprinted loci throughout the genome and a range of additional clinical features., domain: The KRAB domain

Subcellular Location : Nucleus . Binds various differentially methylated regions (DMR). .

Sort : 24520

No4 : 1

Products Images



Western blot analysis of lysates from U2OS cells, primary antibody was diluted at 1:1000, 4° over night