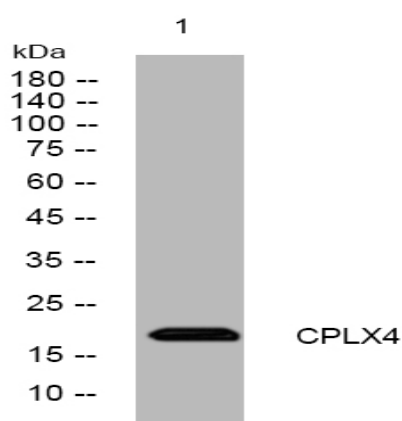


CPLX4 rabbit pAb

| | |
|------------------------------|---|
| Catalog No : | YT6427 |
| Reactivity : | Human;Mouse |
| Applications : | WB |
| Target : | CPLX4 |
| Fields : | >>Synaptic vesicle cycle |
| Gene Name : | CPLX4 |
| Protein Name : | CPLX4 |
| Human Gene Id : | 339302 |
| Human Swiss Prot No : | Q7Z7G2 |
| Mouse Gene Id : | 225644 |
| Mouse Swiss Prot No : | Q80WM3 |
| Immunogen : | Synthesized peptide derived from human CPLX4 AA range: 47-97 |
| Specificity : | This antibody detects endogenous levels of CPLX4 at Human/Mouse |
| Formulation : | Liquid in PBS containing 50% glycerol, 0.5% BSA and 0.02% sodium azide. |
| Source : | Polyclonal, Rabbit,IgG |
| Dilution : | WB 1:500-2000 |
| Purification : | The antibody was affinity-purified from rabbit antiserum by affinity-chromatography using epitope-specific immunogen. |
| Concentration : | 1 mg/ml |

| | |
|-------------------------------|--|
| Storage Stability : | -15°C to -25°C/1 year(Do not lower than -25°C) |
| Molecularweight : | 18kD |
| Background : | This gene likely encodes a member of the complexin family. The encoded protein may be involved in synaptic vesicle exocytosis. [provided by RefSeq, Jan 2009], |
| Function : | function:Positively regulates a late step in synaptic vesicle exocytosis.,PTM:Farnesylation mediates presynaptic targeting and is important for function in neurotransmitter release.,similarity:Belongs to the complexin/synaphin family.,subcellular location:Enriched at the synaptic terminal.,subunit:Weakly binds to the SNARE core complex containing SNAP25, VAMP2 and STX1A., |
| Subcellular Location : | Cell junction, synapse . Cell membrane; Lipid-anchor . Enriched at the synaptic terminal. . |
| Sort : | 4511 |
| No4 : | 1 |
| Host : | Rabbit |
| Modifications : | Unmodified |

Products Images



Western blot analysis of lysates from MCF-7 cells, primary antibody was diluted at 1:1000, 4° over night