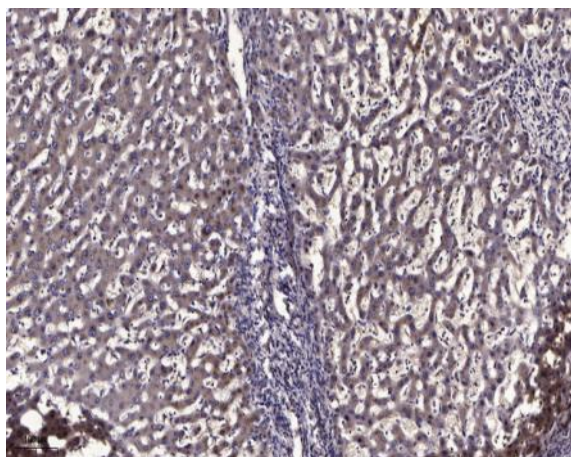


TYB10 rabbit pAb

Catalog No :	YT6361
Reactivity :	Human;Mouse;Rat
Applications :	IHC;IF
Target :	TYB10
Gene Name :	TMSB10 PTMB10 THYB10
Protein Name :	TYB10
Human Gene Id :	9168
Human Swiss Prot No :	P63313
Mouse Gene Id :	19240
Mouse Swiss Prot No :	Q6ZWY8
Rat Gene Id :	100364435
Rat Swiss Prot No :	P63312
Immunogen :	Synthesized peptide derived from human TYB10 AA range: 1-24
Specificity :	This antibody detects endogenous levels of TYB10 at Human/Mouse/Rat
Formulation :	Liquid in PBS containing 50% glycerol, 0.5% BSA and 0.02% sodium azide.
Source :	Polyclonal, Rabbit,IgG
Dilution :	IHC 1:50-200. IF 1:50-200
Purification :	The antibody was affinity-purified from rabbit antiserum by affinity-chromatography using epitope-specific immunogen.

Concentration :	1 mg/ml
Storage Stability :	-15°C to -25°C/1 year(Do not lower than -25°C)
Molecularweight :	5kD
Function :	developmental stage:Found to decrease dramatically after birth.,function:Plays an important role in the organization of the cytoskeleton. Binds to and sequesters actin monomers (G actin) and therefore inhibits actin polymerization.,similarity:Belongs to the thymosin beta family.,
Subcellular Location :	Cytoplasm, cytoskeleton.
Sort :	23786
No4 :	1
Host :	Rabbit
Modifications :	Unmodified

Products Images



Immunohistochemical analysis of paraffin-embedded human liver cancer. 1, Antibody was diluted at 1:200(4° overnight). 2, Tris-EDTA,pH9.0 was used for antigen retrieval. 3,Secondary antibody was diluted at 1:200(room temperature, 45min).