

NIPA4 rabbit pAb

Catalog No :	YT6340
Reactivity :	Human;Mouse
Applications :	WB
Target :	NIPA4
Gene Name :	NIPAL4 ICHN NIPA4
Protein Name :	NIPA4
Human Gene Id :	348938
Human Swiss Prot No :	Q0D2K0
Mouse Gene Id :	214112
Mouse Swiss Prot No :	Q8BZF2
Immunogen :	Synthesized peptide derived from human NIPA4 AA range: 82-132
Specificity :	This antibody detects endogenous levels of NIPA4 at Human/Mouse
Formulation :	Liquid in PBS containing 50% glycerol, 0.5% BSA and 0.02% sodium azide.
Source :	Polyclonal, Rabbit,IgG
Dilution :	WB 1:500-2000
Purification :	The antibody was affinity-purified from rabbit antiserum by affinity-chromatography using epitope-specific immunogen.
Concentration :	1 mg/ml
Storage Stability :	-15°C to -25°C/1 year(Do not lower than -25°C)

Molecularweight : 51kD

Background : This gene likely encodes a membrane receptor. Mutations in this gene have been associated with autosomal recessive congenital ichthyosis. [provided by RefSeq, Feb 2010],

Subcellular Location : Membrane ; Multi-pass membrane protein .

Expression : Highly expressed in brain, lung, stomach, keratinocytes and leukocytes, and in all other tissues tested except liver, thyroid and fetal brain.

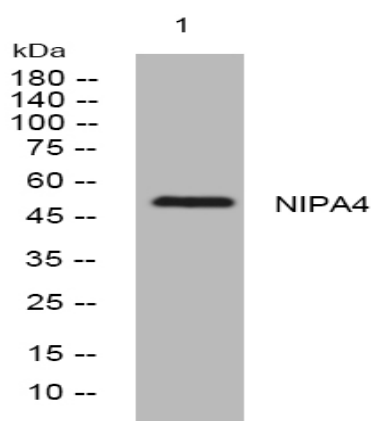
Sort : 10856

No4 : 1

Host : Rabbit

Modifications : Unmodified

Products Images



Western blot analysis of lysates from 293T cells, primary antibody was diluted at 1:1000, 4 ° over night