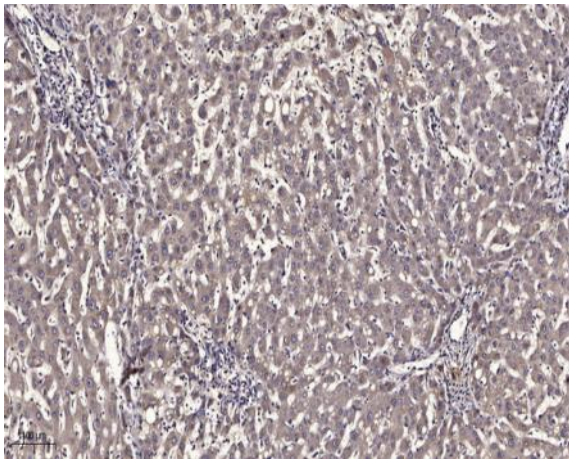


VAMP8 rabbit pAb

Catalog No :	YT6319
Reactivity :	Human;Mouse;Rat
Applications :	IHC;IF
Target :	VAMP8
Fields :	>>SNARE interactions in vesicular transport;>>Autophagy - animal;>>Platelet activation
Gene Name :	VAMP8
Protein Name :	VAMP-8
Human Gene Id :	8673
Human Swiss Prot No :	Q9BV40
Mouse Gene Id :	22320
Mouse Swiss Prot No :	O70404
Rat Gene Id :	83730
Rat Swiss Prot No :	Q9WUF4
Immunogen :	Synthesized peptide derived from human VAMP8 AA range: 46-96
Specificity :	This antibody detects endogenous levels of VAMP8 at Human/Mouse/Rat
Formulation :	Liquid in PBS containing 50% glycerol, 0.5% BSA and 0.02% sodium azide.
Source :	Polyclonal, Rabbit,IgG
Dilution :	IHC 1:50-200. IF 1:50-200

Purification :	The antibody was affinity-purified from rabbit antiserum by affinity-chromatography using epitope-specific immunogen.
Concentration :	1 mg/ml
Storage Stability :	-15°C to -25°C/1 year(Do not lower than -25°C)
Molecularweight :	11kD
Background :	This gene encodes an integral membrane protein that belongs to the synaptobrevin/vesicle-associated membrane protein subfamily of soluble N-ethylmaleimide-sensitive factor attachment protein receptors (SNAREs). The encoded protein is involved in the fusion of synaptic vesicles with the presynaptic membrane.[provided by RefSeq, Jun 2010],
Function :	function:Involved in the targeting and/or fusion of transport vesicles to their target membrane. Involved for dense-granule secretion in platelets. Plays a role in regulated enzyme secretion in pancreatic acinar cells. Involved in the abscission of the midbody during cell division, which leads to completely separate daughter cells. Involved in the homotypic fusion of early and late endosomes.,similarity:Belongs to the synaptobrevin family.,similarity:Contains 1 v-SNARE coiled-coil homology domain.,subunit:Found in a number of SNARE complexes with NAPA, SNAP23, SNAP25, STX1A, STX4, STX7, STX8 and VT11B (By similarity). Interacts with STX8.,tissue specificity:Platelets.,
Subcellular Location :	Lysosome membrane ; Single-pass type IV membrane protein . Early endosome membrane ; Single-pass type IV membrane protein . Late endosome membrane ; Single-pass type IV membrane protein . Cell membrane ; Single-pass type IV membrane protein . Zymogen granule membrane ; Single-pass type IV membrane protein . Perinuclear vesicular structures of the early and late endosomes, coated pits, and trans-Golgi (By similarity). Sub-tight junctional domain in retinal pigment epithelium cells. Midbody region during cytokinesis. Lumenal oriented, apical membranes of nephric tubular cell (By similarity). Cycles through the apical but not through the basolateral plasma membrane (By similarity). Apical region of acinar cells; in zymogen granule membranes (By similarity). .
Expression :	Platelets.
Sort :	24057
No4 :	1
Host :	Rabbit
Modifications :	Unmodified

Products Images



Immunohistochemical analysis of paraffin-embedded human liver cancer. 1, Antibody was diluted at 1:200(4° overnight). 2, Tris-EDTA,pH9.0 was used for antigen retrieval. 3,Secondary antibody was diluted at 1:200(room temperature, 45min).