

## Secretin Polyclonal Antibody

<b>Catalog No :</b>	YT6294
<b>Reactivity :</b>	Human;Rat;Mouse;
<b>Applications :</b>	WB;ELISA;IHC
<b>Target :</b>	Secretin
<b>Fields :</b>	>>Neuroactive ligand-receptor interaction;>>Pancreatic secretion;>>Bile secretion
<b>Gene Name :</b>	SCT
<b>Protein Name :</b>	Secretin
<b>Human Gene Id :</b>	6343
<b>Human Swiss Prot No :</b>	P09683
<b>Immunogen :</b>	Synthesized peptide derived from human Secretin
<b>Specificity :</b>	This antibody detects endogenous levels of human Secretin
<b>Formulation :</b>	Liquid in PBS containing 50% glycerol, 0.5% BSA and 0.02% sodium azide.
<b>Source :</b>	Polyclonal, Rabbit,IgG
<b>Dilution :</b>	WB 1:500-2000;IHC 1:50-300; ELISA 2000-20000
<b>Purification :</b>	The antibody was affinity-purified from rabbit antiserum by affinity-chromatography using epitope-specific immunogen.
<b>Concentration :</b>	1 mg/ml
<b>Storage Stability :</b>	-15°C to -25°C/1 year(Do not lower than -25°C)
<b>Observed Band :</b>	13kD

**Background :** This gene encodes a member of the glucagon family of peptides. The encoded preproprotein is secreted by endocrine S cells in the proximal small intestinal mucosa as a prohormone, then proteolytically processed to generate the mature peptide hormone. The release of this active peptide hormone is stimulated by either fatty acids or acidic pH in the duodenum. This hormone stimulates the secretion of bile and bicarbonate in the duodenum, pancreatic and biliary ducts. [provided by RefSeq, Feb 2016],

**Function :** function:Stimulates formation of  $\text{NaHCO}_3$ -rich pancreatic juice and secretion of  $\text{NaHCO}_3$ -rich bile and inhibits HCl production by the stomach.,online information:Secretin entry,similarity:Belongs to the glucagon family.,

**Subcellular Location :** Secreted .

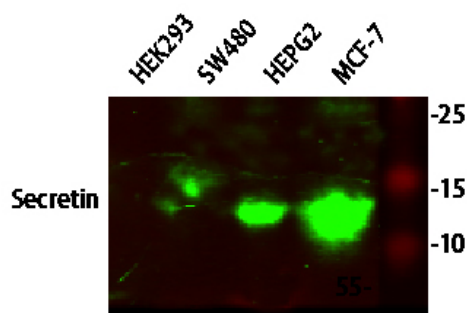
**Sort :** 16204

**No4 :** 1

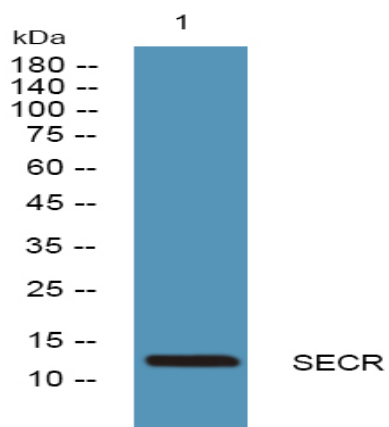
**Host :** Rabbit

**Modifications :** Unmodified

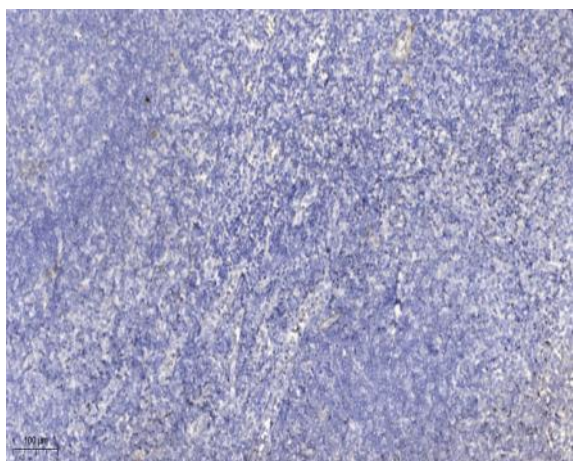
## Products Images



Western blot analysis of various lysates, primary antibody was diluted at 1:1000, 4° over night, secondary antibody(cat: RS23920)was diluted at 1:10000, 37° 1hour.



Western blot analysis of lysates from HCT116 cells, primary antibody was diluted at 1:1000, 4° over night



Immunohistochemical analysis of paraffin-embedded human tonsil. 1, Antibody was diluted at 1:200(4° overnight). 2, Tris-EDTA,pH9.0 was used for antigen retrieval. 3,Secondary antibody was diluted at 1:200(room temperature, 45min).