

## Glutaredoxin-1 Polyclonal Antibody

<b>Catalog No :</b>	YT6281
<b>Reactivity :</b>	Human;Rat;Mouse;
<b>Applications :</b>	WB;IHC;IF;ELISA
<b>Target :</b>	Glutaredoxin-1
<b>Gene Name :</b>	GLRX GRX
<b>Protein Name :</b>	Glutaredoxin-1
<b>Human Gene Id :</b>	2745
<b>Human Swiss Prot No :</b>	P35754
<b>Immunogen :</b>	Synthesized peptide derived from human Glutaredoxin-1 AA range: 8-58
<b>Specificity :</b>	This antibody detects endogenous levels of human Glutaredoxin-1
<b>Formulation :</b>	Liquid in PBS containing 50% glycerol, 0.5% BSA and 0.02% sodium azide.
<b>Source :</b>	Polyclonal, Rabbit,IgG
<b>Dilution :</b>	WB 1:500 - 1:2000. IHC 1:100 - 1:300. IF 1:200 - 1:1000. ELISA: 1:5000. Not yet tested in other applications.
<b>Purification :</b>	The antibody was affinity-purified from rabbit antiserum by affinity-chromatography using epitope-specific immunogen.
<b>Concentration :</b>	1 mg/ml
<b>Storage Stability :</b>	-15°C to -25°C/1 year(Do not lower than -25°C)
<b>Molecularweight :</b>	12kD
<b>Background :</b>	This gene encodes a member of the glutaredoxin family. The encoded protein is a cytoplasmic enzyme catalyzing the reversible reduction of glutathione-protein

mixed disulfides. This enzyme highly contributes to the antioxidant defense system. It is crucial for several signalling pathways by controlling the S-glutathionylation status of signalling mediators. It is involved in beta-amyloid toxicity and Alzheimer's disease. Multiple alternatively spliced transcript variants encoding the same protein have been identified. [provided by RefSeq, Aug 2011],

**Function :**

function:Has a glutathione-disulfide oxidoreductase activity in the presence of NADPH and glutathione reductase. Reduces low molecular weight disulfides and proteins.,similarity:Belongs to the glutaredoxin family.,similarity:Contains 1 glutaredoxin domain.,

**Subcellular Location :**

Cytoplasm.

**Expression :**

Blood,Brain,Lens,Liver,Skin,Spleen,Urinary bladder,

**Sort :**

6644

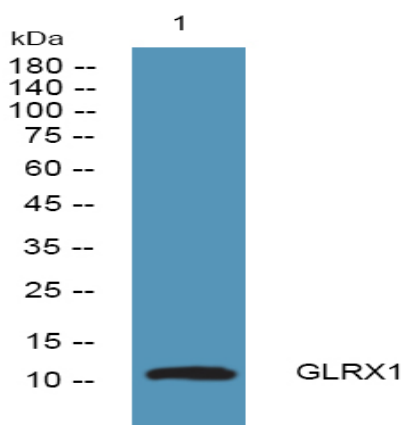
**Host :**

Rabbit

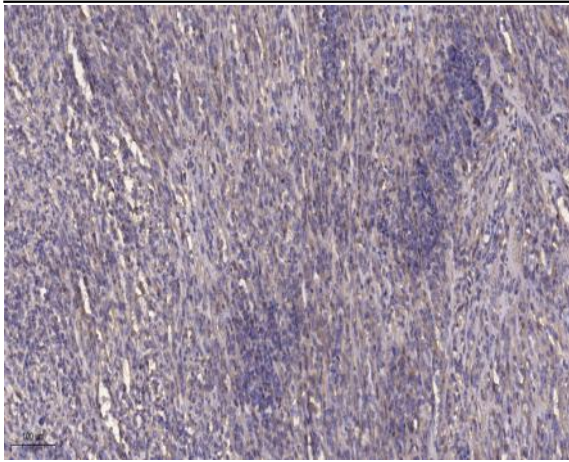
**Modifications :**

Unmodified

## Products Images



Western blot analysis of lysates from Jurkat cells, primary antibody was diluted at 1:1000, 4° over night



Immunohistochemical analysis of paraffin-embedded human Colon cancer. 1, Antibody was diluted at 1:200(4° overnight). 2, Tris-EDTA,pH9.0 was used for antigen retrieval. 3,Secondary antibody was diluted at 1:200(room temperature, 45min).