

S100A7A Polyclonal Antibody

Catalog No :	YT6279
Reactivity :	Human;Rat;Mouse;
Applications :	IHC;ELISA
Target :	S100A7A
Fields :	>>IL-17 signaling pathway
Gene Name :	S100A7A S100A15 S100A7L1
Protein Name :	S100A7A
Human Gene Id :	338324
Human Swiss Prot No :	Q86SG5
Immunogen :	Synthesized peptide derived from human S100A7A AA range: 32-82
Specificity :	This antibody detects endogenous levels of human S100A7A
Formulation :	Liquid in PBS containing 50% glycerol, 0.5% BSA and 0.02% sodium azide.
Source :	Polyclonal, Rabbit,IgG
Dilution :	IHC 1:50-200, ELISA(peptide)1:5000-20000
Purification :	The antibody was affinity-purified from rabbit antiserum by affinity-chromatography using epitope-specific immunogen.
Concentration :	1 mg/ml
Storage Stability :	-15°C to -25°C/1 year(Do not lower than -25°C)
Background :	function:May be involved in epidermal differentiation and inflammation and might therefore be important for the pathogenesis of psoriasis and other diseases.,similarity:Belongs to the S-100 family.,similarity:Contains 2 EF-hand

domains.,tissue specificity:Overexpressed in psoriasis.,

Function :

function:May be involved in epidermal differentiation and inflammation and might therefore be important for the pathogenesis of psoriasis and other diseases.,similarity:Belongs to the S-100 family.,similarity:Contains 2 EF-hand domains.,tissue specificity:Overexpressed in psoriasis.,

Subcellular
Location :

Cytoplasm .

Expression :

Overexpressed in psoriasis.

Sort :

14701

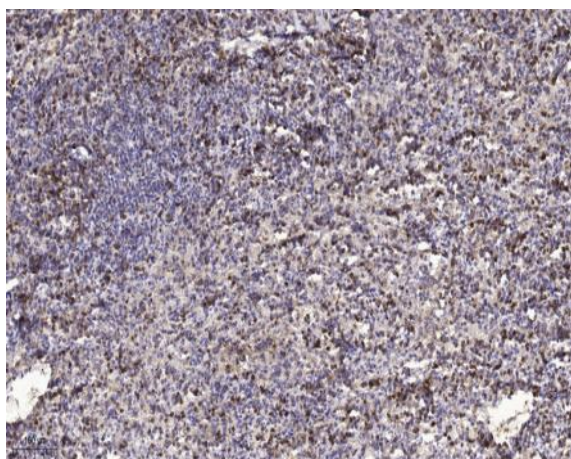
Host :

Rabbit

Modifications :

Unmodified

Products Images



Immunohistochemical analysis of paraffin-embedded human spleen tissue. 1,primary Antibody was diluted at 1:200(4 ° overnight). 2, Sodium citrate pH 6.0 was used for antigen retrieval(>98 ° C,20min). 3,Secondary antibody was diluted at 1:200(room temperature