

PDE6G Polyclonal Antibody

Catalog No :	YT6272
Reactivity :	Human;Mouse
Applications :	IHC;ELISA
Target :	PDE6G
Fields :	>>Purine metabolism;>>Metabolic pathways;>>Phototransduction
Gene Name :	PDE6G PDEG
Protein Name :	PDE6G
Human Gene Id :	5148
Human Swiss Prot No :	P18545
Immunogen :	Synthesized peptide derived from human PDE6G AA range: 10-90
Specificity :	This antibody detects endogenous levels of human PDE6G
Formulation :	Liquid in PBS containing 50% glycerol, 0.5% BSA and 0.02% sodium azide.
Source :	Polyclonal, Rabbit,IgG
Dilution :	IHC 1:50-200, ELISA(peptide)1:5000-20000
Purification :	The antibody was affinity-purified from rabbit antiserum by affinity-chromatography using epitope-specific immunogen.
Concentration :	1 mg/ml
Storage Stability :	-15°C to -25°C/1 year(Do not lower than -25°C)
Background :	This gene encodes the gamma subunit of cyclic GMP-phosphodiesterase, which is composed of alpha- and beta- catalytic subunits and two identical, inhibitory gamma subunits. This gene is expressed in rod photoreceptors and functions in

the phototransduction signaling cascade. It is also expressed in a variety of other tissues, and has been shown to regulate the c-Src protein kinase and G-protein-coupled receptor kinase 2. Alternative splicing results in multiple transcript variants. [provided by RefSeq, Feb 2009],

Function :

catalytic activity:Guanosine 3',5'-cyclic phosphate + H(2)O = guanosine 5'-phosphate.,function:Participates in processes of transmission and amplification of the visual signal. cGMP-PDEs are the effector molecules in G-protein-mediated phototransduction in vertebrate rods and cones.,online information:Retina International's Scientific Newsletter,similarity:Belongs to the rod/cone cGMP-PDE gamma subunit family.,subunit:Oligomer composed of two catalytic chains (alpha and beta), an inhibitory chain (gamma) and the delta chain.,

Subcellular Location :

plasma membrane,photoreceptor disc membrane,

Expression :

Human retina,Retina,

Sort :

11745

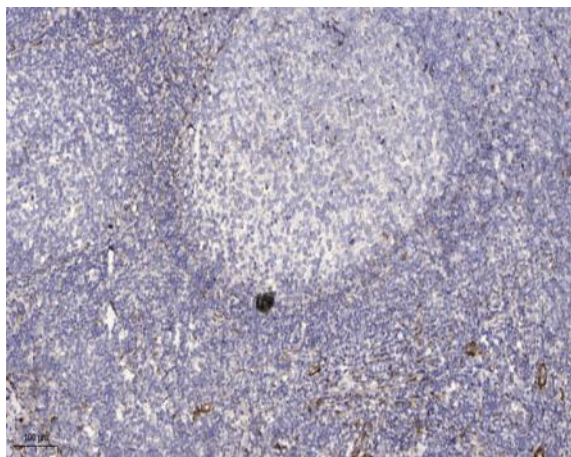
Host :

Rabbit

Modifications :

Unmodified

Products Images



Immunohistochemical analysis of paraffin-embedded human tonsil. 1, Antibody was diluted at 1:200(4° overnight). 2, Tris-EDTA,pH9.0 was used for antigen retrieval. 3,Secondary antibody was diluted at 1:200(room temperature, 30min).