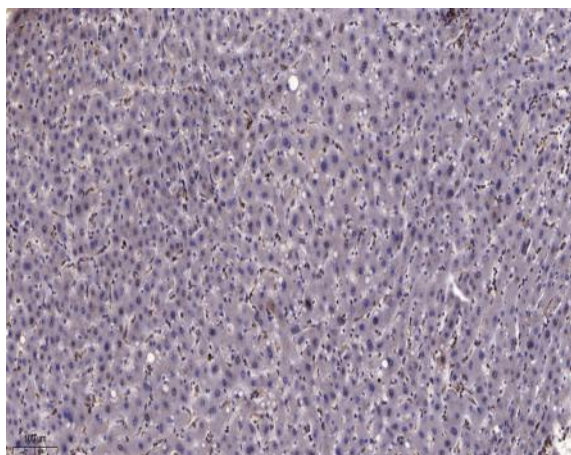


## GNG12 Polyclonal Antibody

<b>Catalog No :</b>	YT6251
<b>Reactivity :</b>	Human;Mouse
<b>Applications :</b>	IHC;ELISA
<b>Target :</b>	GNG12
<b>Fields :</b>	>>MAPK signaling pathway;>>Ras signaling pathway;>>Chemokine signaling pathway;>>PI3K-Akt signaling pathway;>>Apelin signaling pathway;>>Circadian entrainment;>>Retrograde endocannabinoid signaling;>>Glutamatergic synapse;>>Cholinergic synapse;>>Serotonergic synapse;>>GABAergic synapse;>>Dopaminergic synapse;>>Regulation of actin cytoskeleton;>>Relaxin signaling pathway;>>Morphine addiction;>>Alcoholism;>>Human cytomegalovirus infection;>>Kaposi sarcoma-associated herpesvirus infection;>>Human immunodeficiency virus 1 infection;>>Pathways in cancer
<b>Gene Name :</b>	GNG12
<b>Protein Name :</b>	GNG12
<b>Human Gene Id :</b>	55970
<b>Human Swiss Prot No :</b>	Q9UBI6
<b>Immunogen :</b>	Synthesized peptide derived from human GNG12 AA range: 1-50
<b>Specificity :</b>	This antibody detects endogenous levels of human GNG12
<b>Formulation :</b>	Liquid in PBS containing 50% glycerol, 0.5% BSA and 0.02% sodium azide.
<b>Source :</b>	Polyclonal, Rabbit,IgG
<b>Dilution :</b>	IHC 1:50-200, ELISA(peptide)1:5000-20000
<b>Purification :</b>	The antibody was affinity-purified from rabbit antiserum by affinity-chromatography using epitope-specific immunogen.
	1 mg/ml

<b>Storage Stability :</b>	-15 °C to -25 °C/1 year (Do not lower than -25 °C)
<b>Molecular weight :</b>	8kD
<b>Background :</b>	function: Guanine nucleotide-binding proteins (G proteins) are involved as a modulator or transducer in various transmembrane signaling systems. The beta and gamma chains are required for the GTPase activity, for replacement of GDP by GTP, and for G protein-effector interaction., similarity: Belongs to the G protein gamma family., subunit: G proteins are composed of 3 units, alpha, beta and gamma.,
<b>Function :</b>	function: Guanine nucleotide-binding proteins (G proteins) are involved as a modulator or transducer in various transmembrane signaling systems. The beta and gamma chains are required for the GTPase activity, for replacement of GDP by GTP, and for G protein-effector interaction., similarity: Belongs to the G protein gamma family., subunit: G proteins are composed of 3 units, alpha, beta and gamma.,
<b>Subcellular Location :</b>	Cell membrane ; Lipid-anchor ; Cytoplasmic side .
<b>Expression :</b>	Adrenal gland, Brain, Epithelium, Human small intestine, Melanoma, Uterus,
<b>Sort :</b>	6671
<b>No4 :</b>	1
<b>Host :</b>	Rabbit
<b>Modifications :</b>	Unmodified

## Products Images



Immunohistochemical analysis of paraffin-embedded human liver cancer. 1, Antibody was diluted at 1:200 (4° overnight). 2, Tris-EDTA, pH 9.0 was used for antigen retrieval. 3, Secondary antibody was diluted at 1:200 (room temperature, 45min).