

## EPG5 Polyclonal Antibody

<b>Catalog No :</b>	YT5997
<b>Reactivity :</b>	Human;Rat;Mouse;
<b>Applications :</b>	WB;IHC;IF
<b>Target :</b>	EPG5
<b>Gene Name :</b>	EPG5 KIAA1632
<b>Protein Name :</b>	Ectopic P granules protein 5 homolog
<b>Human Gene Id :</b>	57724
<b>Human Swiss Prot No :</b>	Q9HCE0
<b>Mouse Gene Id :</b>	100502841
<b>Mouse Swiss Prot No :</b>	Q80TA9
<b>Immunogen :</b>	Synthetic peptide from human protein at AA range: 141-190
<b>Specificity :</b>	The antibody detects endogenous EPG5
<b>Formulation :</b>	Liquid in PBS containing 50% glycerol, 0.5% BSA and 0.02% sodium azide.
<b>Source :</b>	Polyclonal, Rabbit,IgG
<b>Dilution :</b>	WB 1:1000-2000 IHC 1:200-500. IF 1:50-200
<b>Purification :</b>	The antibody was affinity-purified from rabbit antiserum by affinity-chromatography using epitope-specific immunogen.
<b>Concentration :</b>	1 mg/ml
<b>Storage Stability :</b>	-15°C to -25°C/1 year(Do not lower than -25°C)

**Molecularweight :** 292kD

**Background :** This gene encodes a large coiled coil domain-containing protein that functions in autophagy during starvation conditions. Mutations in this gene cause Vici syndrome. [provided by RefSeq, Aug 2015],

**Function :** sequence caution:Translated as Trp.,similarity:Belongs to the UPF0493 family.,

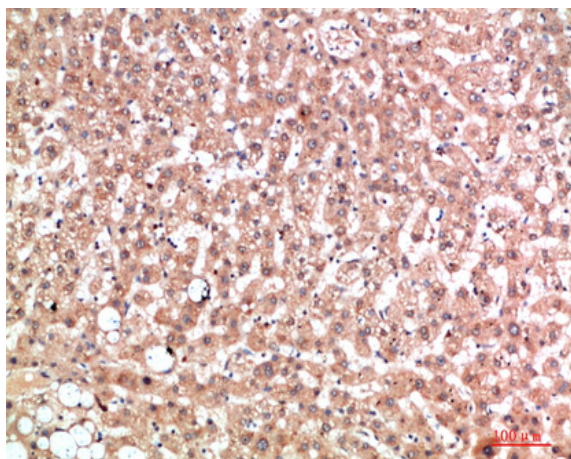
**Subcellular Location :** Cytoplasm, perinuclear region . Lysosome .

**Expression :** Brain,Cervix,Lymph node,Placenta,

**Sort :** 5601

**No4 :** 1

## Products Images



Immunohistochemical analysis of paraffin-embedded human-liver, antibody was diluted at 1:200