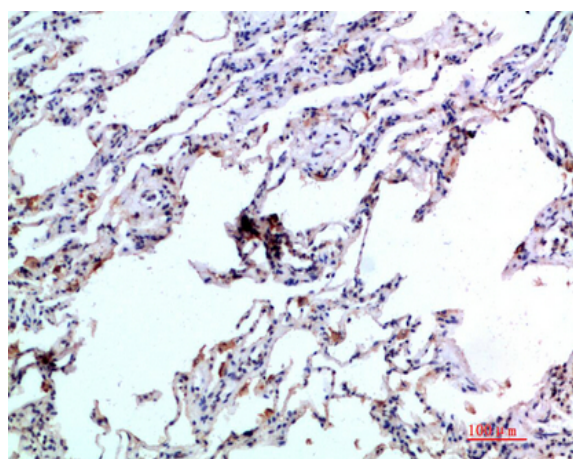


Eotaxin-2 Polyclonal Antibody

Catalog No :	YT5959
Reactivity :	Human;Rat;Mouse;
Applications :	IHC;IF;ELISA
Target :	Eotaxin-2
Fields :	>>Cytokine-cytokine receptor interaction;>>Viral protein interaction with cytokine and cytokine receptor;>>Chemokine signaling pathway
Gene Name :	CCL24 MPIF2 SCYA24
Protein Name :	C-C motif chemokine 24 (CK-beta-6) (Eosinophil chemotactic protein 2) (Eotaxin-2) (Myeloid progenitor inhibitory factor 2) (MPIF-2) (Small-inducible cytokine A24)
Human Gene Id :	6369
Human Swiss Prot No :	O00175
Mouse Gene Id :	56221
Mouse Swiss Prot No :	Q9JKC0
Immunogen :	Synthetic peptide from human protein at AA range: 61-110
Specificity :	The antibody detects endogenous Eotaxin-2
Formulation :	Liquid in PBS containing 50% glycerol, 0.5% BSA and 0.02% sodium azide.
Source :	Polyclonal, Rabbit,IgG
Dilution :	IHC 1:50-200, ELISA 1:10000-20000. IF 1:50-200
Purification :	The antibody was affinity-purified from rabbit antiserum by affinity-chromatography using epitope-specific immunogen.

Concentration :	1 mg/ml
Storage Stability :	-15°C to -25°C/1 year(Do not lower than -25°C)
Cell Pathway :	Cytokine-cytokine receptor interaction;Chemokine;
Background :	This gene belongs to the subfamily of small cytokine CC genes. Cytokines are a family of secreted proteins involved in immunoregulatory and inflammatory processes. The CC cytokines are proteins characterized by two adjacent cysteines. The cytokine encoded by this gene displays chemotactic activity on resting T lymphocytes, a minimal activity on neutrophils, and is negative on monocytes and activated T lymphocytes. The protein is also a strong suppressor of colony formation by a multipotential hematopoietic progenitor cell line. [provided by RefSeq, Jul 2008],
Function :	function:Chemotactic for resting T-lymphocytes, and eosinophils. Has lower chemotactic activity for neutrophils but none for monocytes and activated lymphocytes. Is a strong suppressor of colony formation by a multipotential hematopoietic progenitor cell line. Binds to CCR3.,online information:CCL24 entry,PTM:N-glycosylated.,similarity:Belongs to the intercrine beta (chemokine CC) family.,tissue specificity:Activated monocytes and activated T lymphocytes.,
Subcellular Location :	Secreted .
Expression :	Activated monocytes and activated T lymphocytes.
Sort :	5578
No4 :	1

Products Images



Immunohistochemical analysis of paraffin-embedded human-lung, antibody was diluted at 1:200