

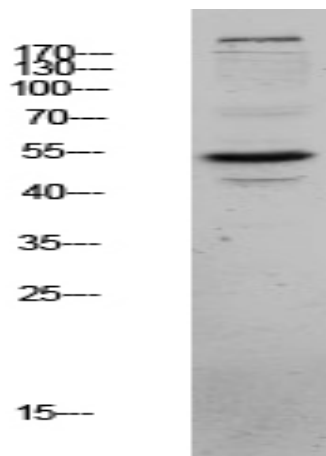
CLUS Polyclonal Antibody

Catalog No :	YT6146
Reactivity :	Human;Mouse;Rat
Applications :	WB;ELISA
Target :	CLUS
Fields :	>>Complement and coagulation cascades
Gene Name :	CLU APOJ CLI KUB1 AAG4
Protein Name :	Clusterin (Aging-associated gene 4 protein) (Apolipoprotein J) (Apo-J) (Complement cytolysis inhibitor) (CLI) (Complement-associated protein SP-40,40) (Ku70-binding protein 1) (NA1/NA2) (Testosterone-
Human Gene Id :	1191
Human Swiss Prot No :	P10909
Mouse Gene Id :	12759
Mouse Swiss Prot No :	Q06890
Rat Gene Id :	24854
Rat Swiss Prot No :	P05371
Immunogen :	Synthesized peptide derived from human CLUS Polyclonal
Specificity :	This antibody detects endogenous levels of CLUS.
Formulation :	Liquid in PBS containing 50% glycerol, 0.5% BSA and 0.02% sodium azide.
Source :	Polyclonal, Rabbit,IgG
Dilution :	WB 1:500-2000, ELISA 1:10000-20000

Purification :	The antibody was affinity-purified from rabbit antiserum by affinity-chromatography using epitope-specific immunogen.
Concentration :	1 mg/ml
Storage Stability :	-15°C to -25°C/1 year(Do not lower than -25°C)
Observed Band :	52kD
Background :	The protein encoded by this gene is a secreted chaperone that can under some stress conditions also be found in the cell cytosol. It has been suggested to be involved in several basic biological events such as cell death, tumor progression, and neurodegenerative disorders. Alternate splicing results in both coding and non-coding variants.[provided by RefSeq, May 2011],
Function :	function:Not yet clear. It is known to be expressed in a variety of tissues and it seems to be able to bind to cells, membranes and hydrophobic proteins. It has been associated with programmed cell death (apoptosis).,similarity:Belongs to the clusterin family.,subunit:Antiparallel disulfide-linked heterodimer. Interacts with APOA1, CLUAP1 AND PON1.,
Subcellular Location :	[Isoform 1]: Secreted . Can retrotranslocate from the secretory compartments to the cytosol upon cellular stress. .; [Isoform 4]: Cytoplasm . Keeps cytoplasmic localization in stressed and unstressed cell. .; [Isoform 6]: Cytoplasm . Keeps cytoplasmic localization in stressed and unstressed cell. .; Nucleus . Cytoplasm . Mitochondrion membrane; Peripheral membrane protein; Cytoplasmic side . Cytoplasm, cytosol . Microsome . Endoplasmic reticulum . Mitochondrion . Mitochondrion membrane . Cytoplasm, perinuclear region . Cytoplasmic vesicle, secretory vesicle, chromaffin granule . Secreted isoforms can retrotranslocate from the secretory compartments to the cytosol upon cellular stress (PubMed:17451556). Detected in perinuclear foci that may be aggresomes containing misfolded, ubiquitinated
Expression :	Detected in blood plasma, cerebrospinal fluid, milk, seminal plasma and colon mucosa. Detected in the germinal center of colon lymphoid nodules and in colon parasympathetic ganglia of the Auerbach plexus (at protein level). Ubiquitous. Detected in brain, testis, ovary, liver and pancreas, and at lower levels in kidney, heart, spleen and lung.
Tag :	hot
Sort :	4299
No4 :	1
Host :	Rabbit

Modifications : Unmodified

Products Images



Western blot analysis of MCF-7 lysate, antibody was diluted at 1000. Secondary antibody(catalog#:RS0002) was diluted at 1:20000