

CD109 Polyclonal Antibody

Catalog No :	YT5927
Reactivity :	Human;Rat;Mouse;
Applications :	IHC;IF;ELISA
Target :	CD109
Gene Name :	CD109 CPAMD7
Protein Name :	CD109 antigen (150 kDa TGF-beta-1-binding protein) (C3 and PZP-like alpha-2-macroglobulin domain-containing protein 7) (Platelet-specific Gov antigen) (p180) (r150) (CD antigen CD109)
Human Gene Id :	135228
Human Swiss Prot No :	Q6YHK3
Mouse Gene Id :	235505
Mouse Swiss Prot No :	Q8R422
Immunogen :	Synthetic peptide from human protein at AA range: 751-800
Specificity :	The antibody detects endogenous CD109
Formulation :	Liquid in PBS containing 50% glycerol, 0.5% BSA and 0.02% sodium azide.
Source :	Polyclonal, Rabbit,IgG
Dilution :	IHC 1:50-200, ELISA 1:10000-20000. IF 1:50-200
Purification :	The antibody was affinity-purified from rabbit antiserum by affinity-chromatography using epitope-specific immunogen.
Concentration :	1 mg/ml
Storage Stability :	-15°C to -25°C/1 year(Do not lower than -25°C)

Background :

This gene encodes a glycosyl phosphatidylinositol (GPI)-linked glycoprotein that localizes to the surface of platelets, activated T-cells, and endothelial cells. The protein binds to and negatively regulates signalling by transforming growth factor beta (TGF-beta). Multiple transcript variants encoding different isoforms have been found for this gene. [provided by RefSeq, Apr 2014],

Function :

function:Modulates negatively TGFB1 signaling in keratinocytes.,polymorphism:The Gov(b) variant in position 703 defines the Gov alloantigenic determinants.,PTM:2 forms of 150 (p150) and 120 kDa (p120) exist due to proteolytic degradation from a 180 kDa form.,PTM:N-glycosylated.,similarity:Belongs to the protease inhibitor I39 (alpha-2-macroglobulin) family.,subunit:Heterodimer; disulfide-linked. Interacts with TGFB1 and TGFB1. Forms a heteromeric complex with TGFB1, TGFB2 and TGFB3 in a ligand-independent manner.,tissue specificity:Widely expressed with high level in uterus, aorta, heart, lung, trachea, placenta and in fetal heart, kidney, liver, spleen and lung. Expressed by CD34(+) acute myeloid leukemia cell lines, T-cell lines, activated T lymphoblasts, endothelial cells and activated platelets. Isoform 5 is expressed in placenta. Isoform 1 is expressed in keratinocytes and place

Subcellular Location :

Cell membrane ; Lipid-anchor, GPI-anchor .

Expression :

Widely expressed with high level in uterus, aorta, heart, lung, trachea, placenta and in fetal heart, kidney, liver, spleen and lung. Expressed by CD34(+) acute myeloid leukemia cell lines, T-cell lines, activated T-lymphoblasts, endothelial cells and activated platelets. Isoform 4 is expressed in placenta. Isoform 1 is expressed in keratinocytes and placenta.

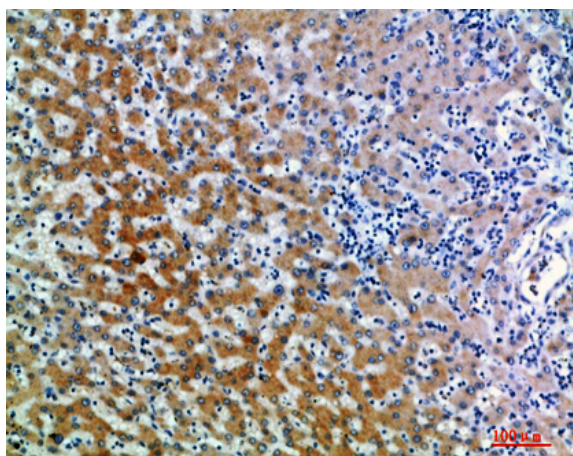
Sort :

3365

No4 :

1

Products Images



Immunohistochemical analysis of paraffin-embedded human-liver, antibody was diluted at 1:200