

## TGFβ2 Polyclonal Antibody

<b>Catalog No :</b>	YT5893
<b>Reactivity :</b>	Human;Mouse;Rat
<b>Applications :</b>	WB;IHC;IF;ELISA
<b>Target :</b>	TGFβ2
<b>Fields :</b>	>>MAPK signaling pathway;>>Cytokine-cytokine receptor interaction;>>FoxO signaling pathway;>>Cell cycle;>>Cellular senescence;>>TGF-beta signaling pathway;>>Osteoclast differentiation;>>Hippo signaling pathway;>>AGE-RAGE signaling pathway in diabetic complications;>>Leishmaniasis;>>Chagas disease;>>Malaria;>>Toxoplasmosis;>>Amoebiasis;>>Tuberculosis;>>Hepatitis B;>>Human T-cell leukemia virus 1 infection;>>Pathways in cancer;>>Proteoglycans in cancer;>>MicroRNAs in cancer;>>Colorectal cancer;>>Renal cell carcinoma;>>Pancreatic cancer;>>Chronic myeloid leukemia;>>Hepatocellular carcinoma;>>Gastric cancer;>>Inflammatory bowel disease;>>Rheumatoid arthritis;>>Hypertrophic cardiomyopathy;>>Dilated cardiomyopathy;>>Diabetic cardiomyopathy
<b>Gene Name :</b>	TGFB2
<b>Protein Name :</b>	Transforming growth factor beta-2 (TGF-beta-2) (BSC-1 cell growth inhibitor) (Cetermin) (Glioblastoma-derived T-cell suppressor factor) (G-TSF) (Polygerin)
<b>Human Gene Id :</b>	7042
<b>Human Swiss Prot No :</b>	P61812
<b>Mouse Gene Id :</b>	21808
<b>Mouse Swiss Prot No :</b>	P27090
<b>Rat Swiss Prot No :</b>	Q07257
<b>Immunogen :</b>	The antiserum was produced against synthesized peptide derived from human TGF beta2. AA range:361-410
<b>Specificity :</b>	The antibody detects endogenous TGFβ2

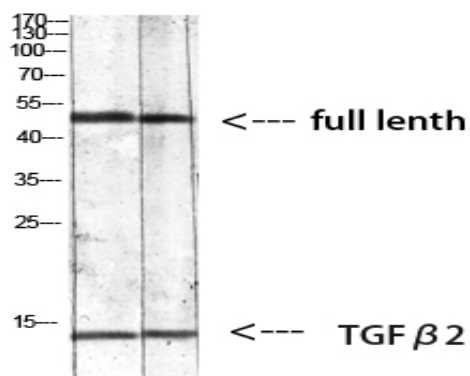
<b>Formulation :</b>	Liquid in PBS containing 50% glycerol, 0.5% BSA and 0.02% sodium azide.
<b>Source :</b>	Polyclonal, Rabbit,IgG
<b>Dilution :</b>	WB 1:500-2000,IHC 1:500-200, ELISA 1:10000-20000. IF 1:50-200
<b>Purification :</b>	The antibody was affinity-purified from rabbit antiserum by affinity-chromatography using epitope-specific immunogen.
<b>Concentration :</b>	1 mg/ml
<b>Storage Stability :</b>	-15°C to -25°C/1 year(Do not lower than -25°C)
<b>Observed Band :</b>	47kD,12kD
<b>Cell Pathway :</b>	MAPK_ERK_Growth;MAPK_G_Protein;Cytokine-cytokine receptor interaction;Cell_Cycle_G1S;Cell_Cycle_G2M_DNA;TGF-beta;Intestinal immune network for IgA production;Pathways in cancer;Colorectal cancer;Renal
<b>Background :</b>	This gene encodes a secreted ligand of the TGF-beta (transforming growth factor-beta) superfamily of proteins. Ligands of this family bind various TGF-beta receptors leading to recruitment and activation of SMAD family transcription factors that regulate gene expression. The encoded preproprotein is proteolytically processed to generate a latency-associated peptide (LAP) and a mature peptide, and is found in either a latent form composed of a mature peptide homodimer, a LAP homodimer, and a latent TGF-beta binding protein, or in an active form consisting solely of the mature peptide homodimer. The mature peptide may also form heterodimers with other TGF-beta family members. Disruption of the TGF-beta/SMAD pathway has been implicated in a variety of human cancers. A chromosomal translocation that includes this gene is associated with Peters&apos; anomaly, a congenital defect of the an
<b>Function :</b>	disease:A chromosomal aberration involving TGFB2 is found in a family with Peters anomaly [MIM:604229]. Translocation t(1;7)(q41;p21) with HDAC9. Peters anomaly consists of a central corneal leukoma, absence of the posterior corneal stroma and Descemet membrane, and a variable degree of iris and lenticular attachments to the central aspect of the posterior cornea.,function:TGF-beta 2 has suppressive effects on interleukin-2 dependent T-cell growth.,online information:TGF beta-2 entry,similarity:Belongs to the TGF-beta family.,subunit:Homodimer; disulfide-linked.,
<b>Subcellular Location :</b>	[Latency-associated peptide]: Secreted, extracellular space, extracellular matrix .; [Transforming growth factor beta-2]: Secreted .
<b>Expression :</b>	Aorta endothelial cell,Lung,

Tag : hot

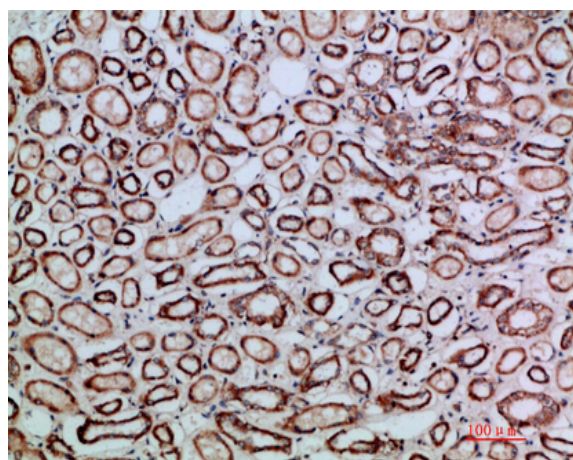
Sort : 136

No4 : 1

## Products Images



Western blot analysis of mouse-kidney 293T mouse-lung lysate, antibody was diluted at 1000. Secondary antibody(catalog#:RS0002) was diluted at 1:20000



Immunohistochemical analysis of paraffin-embedded human-kidney, antibody was diluted at 1:200