

MIA Polyclonal Antibody

Catalog No :	YT6015
Reactivity :	Human;Rat;Mouse;
Applications :	IHC;IF;ELISA
Target :	MIA
Gene Name :	MIA
Protein Name :	Melanoma-derived growth regulatory protein (Melanoma inhibitory activity protein)
Human Gene Id :	8190
Human Swiss Prot No :	Q16674
Mouse Gene Id :	12587
Mouse Swiss Prot No :	Q61865
Immunogen :	Synthetic peptide from human protein at AA range: 90-131
Specificity :	The antibody detects endogenous MIA
Formulation :	Liquid in PBS containing 50% glycerol, 0.5% BSA and 0.02% sodium azide.
Source :	Polyclonal, Rabbit,IgG
Dilution :	IHC 1:50-200, ELISA 1:10000-20000. IF 1:50-200
Purification :	The antibody was affinity-purified from rabbit antiserum by affinity-chromatography using epitope-specific immunogen.
Concentration :	1 mg/ml
Storage Stability :	-15°C to -25°C/1 year(Do not lower than -25°C)

Background : function:Elicits growth inhibition on melanoma cells in vitro as well as some other neuroectodermal tumors, including gliomas.,PTM:May possess two intramolecular disulfide bonds.,similarity:Belongs to the MIA/OTOR family.,similarity:Contains 1 SH3 domain.,tissue specificity:All malignant melanoma cell lines tested and infrequently in glioma cell lines.,

Function : function:Elicits growth inhibition on melanoma cells in vitro as well as some other neuroectodermal tumors, including gliomas.,PTM:May possess two intramolecular disulfide bonds.,similarity:Belongs to the MIA/OTOR family.,similarity:Contains 1 SH3 domain.,tissue specificity:All malignant melanoma cell lines tested and infrequently in glioma cell lines.,

Subcellular Location : Secreted.

Expression : All malignant melanoma cell lines tested and infrequently in glioma cell lines.

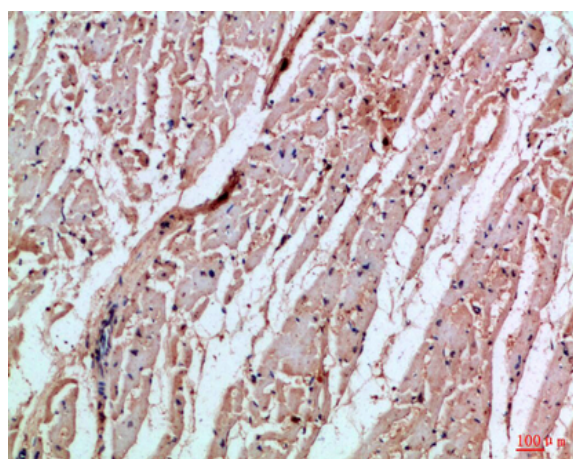
Sort : 9630

No4 : 1

Host : Rabbit

Modifications : Unmodified

Products Images



Immunohistochemical analysis of paraffin-embedded Human-heart, antibody was diluted at 1:100