

BMP-9 Polyclonal Antibody

Catalog No :	YT5956
Reactivity :	Human;Mouse
Applications :	IHC;IF;ELISA
Target :	BMP-9
Fields :	>>Cytokine-cytokine receptor interaction
Gene Name :	GDF2 BMP9
Protein Name :	Growth/differentiation factor 2 (GDF-2) (Bone morphogenetic protein 9) (BMP-9)
Human Gene Id :	2658
Human Swiss Prot No :	Q9UK05
Mouse Gene Id :	12165
Mouse Swiss Prot No :	Q9WV56
Immunogen :	Synthetic peptide from human protein at AA range: 371-420
Specificity :	The antibody detects endogenous BMP-9
Formulation :	Liquid in PBS containing 50% glycerol, 0.5% BSA and 0.02% sodium azide.
Source :	Polyclonal, Rabbit,IgG
Dilution :	IHC 1:50-200, ELISA 1:10000-20000. IF 1:50-200
Purification :	The antibody was affinity-purified from rabbit antiserum by affinity-chromatography using epitope-specific immunogen.
Concentration :	1 mg/ml

Storage Stability : -15°C to -25°C/1 year (Do not lower than -25°C)

Background : This gene encodes a secreted ligand of the TGF-beta (transforming growth factor-beta) superfamily of proteins. Ligands of this family bind various TGF-beta receptors leading to recruitment and activation of SMAD family transcription factors that regulate gene expression. The encoded preproprotein is proteolytically processed to generate each subunit of the disulfide-linked homodimer. This protein regulates cartilage and bone development, angiogenesis and differentiation of cholinergic central nervous system neurons. Mutations in this gene are associated with hereditary hemorrhagic telangiectasia. [provided by RefSeq, Jul 2016],

Function : function: Could be involved in bone formation., online information: GDF2 entry, similarity: Belongs to the TGF-beta family., subunit: Homodimer; disulfide-linked.,

Subcellular Location : Secreted .

Expression : Detected in blood plasma (at protein level).

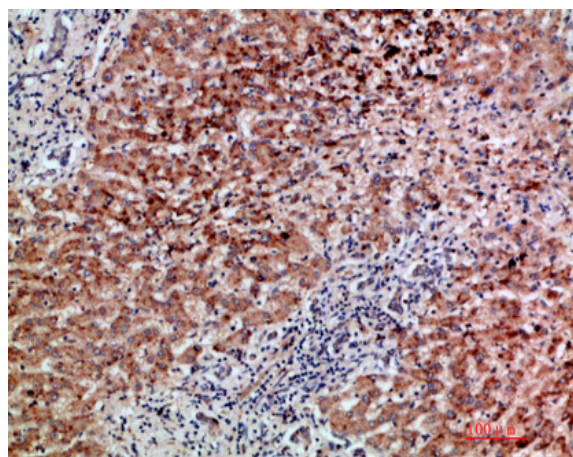
Sort : 2809

No4 : 1

Host : Rabbit

Modifications : Unmodified

Products Images



Immunohistochemical analysis of paraffin-embedded human liver cancer, antibody was diluted at 1:200