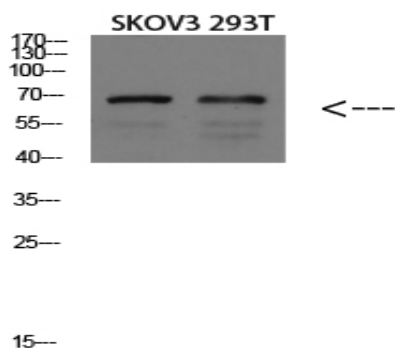


## GADD34 Polyclonal Antibody

<b>Catalog No :</b>	YT5900
<b>Reactivity :</b>	Human;Rat;Mouse;
<b>Applications :</b>	WB;ELISA
<b>Target :</b>	GADD34
<b>Fields :</b>	>>Protein processing in endoplasmic reticulum
<b>Gene Name :</b>	PPP1R15A GADD34
<b>Protein Name :</b>	Protein phosphatase 1 regulatory subunit 15A (Growth arrest and DNA damage-inducible protein GADD34) (Myeloid differentiation primary response protein MyD116 homolog)
<b>Human Gene Id :</b>	23645
<b>Human Swiss Prot No :</b>	O75807
<b>Mouse Gene Id :</b>	17872
<b>Mouse Swiss Prot No :</b>	P17564
<b>Immunogen :</b>	Synthetic peptide from human protein at AA range: 430-490
<b>Specificity :</b>	The antibody detects endogenous GADD34
<b>Formulation :</b>	Liquid in PBS containing 50% glycerol, 0.5% BSA and 0.02% sodium azide.
<b>Source :</b>	Polyclonal, Rabbit,IgG
<b>Dilution :</b>	WB 1:500-2000, ELISA 1:10000-20000
<b>Purification :</b>	The antibody was affinity-purified from rabbit antiserum by affinity-chromatography using epitope-specific immunogen.
<b>Concentration :</b>	1 mg/ml

<b>Storage Stability :</b>	-15 °C to -25 °C/1 year(Do not lower than -25 °C)
<b>Observed Band :</b>	73kD
<b>Background :</b>	This gene is a member of a group of genes whose transcript levels are increased following stressful growth arrest conditions and treatment with DNA-damaging agents. The induction of this gene by ionizing radiation occurs in certain cell lines regardless of p53 status, and its protein response is correlated with apoptosis following ionizing radiation. [provided by RefSeq, Jul 2008],
<b>Function :</b>	function:Recruits the serine/threonine-protein phosphatase PP1 to dephosphorylate the translation initiation factor eIF-2A/EIF2S1 , thereby reversing the shut-off of protein synthesis initiated by stress-inducible kinases and facilitating recovery of cells from stress. Down-regulates the TGF-beta signaling pathway by promoting dephosphorylation of TGFB1 by PP1. May promote apoptosis by inducing TP53 phosphorylation on 'Ser-15'.induction:By methyl methanesulfonate and ionizing irradiation. By IL24 in melanoma cells; which induces apoptosis.,miscellaneous:The phosphatase activity of the PPP1R15A-PP1 complex toward EIF2S1 is specifically inhibited by Salubrinol, a drug that protects cells from endoplasmic reticulum stress.,PTM:Phosphorylated on tyrosine by LYN; which impairs its antiproliferative activity.,similarity:Belongs to the PPP1R15 family.,subunit:Interacts with PCNA (By similarity)
<b>Subcellular Location :</b>	Endoplasmic reticulum membrane; Peripheral membrane protein; Cytoplasmic side . Mitochondrion outer membrane; Peripheral membrane protein; Cytoplasmic side . Associates with membranes via an N-terminal amphipathic intramembrane region. .
<b>Expression :</b>	Brain,
<b>Tag :</b>	hot
<b>Sort :</b>	6389
<b>No4 :</b>	1
<b>Host :</b>	Rabbit
<b>Modifications :</b>	Unmodified

## Products Images



Western blot analysis of MOUSE-BRAIN lysate, antibody was diluted at 1000. Secondary antibody(catalog#:RS0002) was diluted at 1:20000