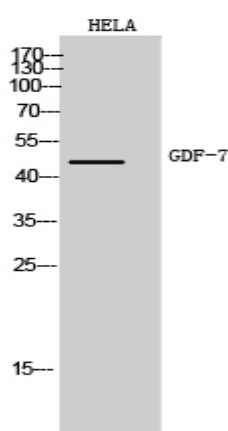


## GDF-7 Polyclonal Antibody

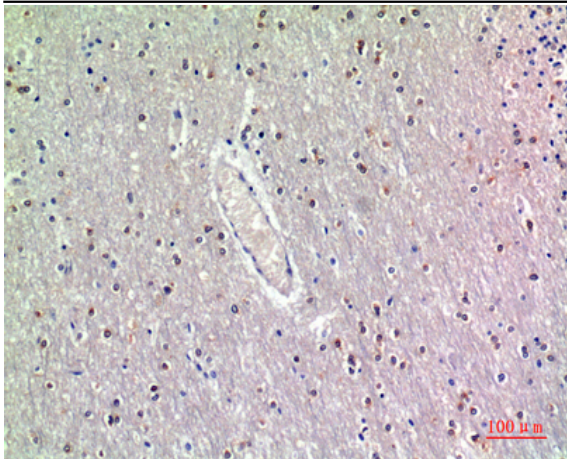
<b>Catalog No :</b>	YT5654
<b>Reactivity :</b>	Human;Mouse;Rat
<b>Applications :</b>	WB;IHC;IF;ELISA
<b>Target :</b>	GDF-7
<b>Fields :</b>	>>Cytokine-cytokine receptor interaction;>>TGF-beta signaling pathway;>>Axon guidance;>>Hippo signaling pathway
<b>Gene Name :</b>	GDF7
<b>Protein Name :</b>	Growth/differentiation factor 7
<b>Human Gene Id :</b>	151449
<b>Human Swiss Prot No :</b>	Q7Z4P5
<b>Mouse Gene Id :</b>	238057
<b>Mouse Swiss Prot No :</b>	P43029
<b>Immunogen :</b>	The antiserum was produced against synthesized peptide derived from the Internal region of human GDF7. AA range:321-370
<b>Specificity :</b>	GDF-7 Polyclonal Antibody detects endogenous levels of GDF-7 protein.
<b>Formulation :</b>	Liquid in PBS containing 50% glycerol, 0.5% BSA and 0.02% sodium azide.
<b>Source :</b>	Polyclonal, Rabbit,IgG
<b>Dilution :</b>	WB 1:500 - 1:2000. IHC: 1:100-1:300. ELISA: 1:10000.. IF 1:50-200
<b>Purification :</b>	The antibody was affinity-purified from rabbit antiserum by affinity-chromatography using epitope-specific immunogen.
<b>Concentration :</b>	1 mg/ml

<b>Storage Stability :</b>	-15°C to -25°C/1 year(Do not lower than -25°C)
<b>Observed Band :</b>	47kD
<b>Cell Pathway :</b>	TGF-beta;
<b>Background :</b>	This gene encodes a secreted ligand of the TGF-beta (transforming growth factor-beta) superfamily of proteins. Ligands of this family bind various TGF-beta receptors leading to recruitment and activation of SMAD family transcription factors that regulate gene expression. The encoded preproprotein is proteolytically processed to generate each subunit of the disulfide-linked homodimer. This protein may play a role in the differentiation of tendon cells and spinal cord interneurons. A mutation in this gene may be associated with increased risk for Barrett's esophagus and esophageal adenocarcinoma. [provided by RefSeq, Sep 2016],
<b>Function :</b>	function:May play an active role in the motor area of the primate neocortex.,similarity:Belongs to the TGF-beta family.,subunit:Homodimer; disulfide-linked.,
<b>Subcellular Location :</b>	Secreted .
<b>Expression :</b>	Testis,
<b>Sort :</b>	6533
<b>No4 :</b>	1

## Products Images



Western Blot analysis of HeLa cells using GDF-7 Polyclonal Antibody. Antibody was diluted at 1:1000. Secondary antibody(catalog#:RS0002) was diluted at 1:20000



Immunohistochemical analysis of paraffin-embedded human-brain, antibody was diluted at 1:200