

ERLIN1/2 Polyclonal Antibody

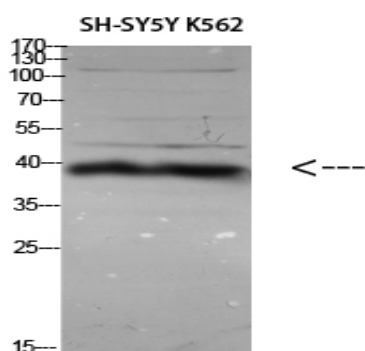
| | |
|------------------------------|--|
| Catalog No : | YT5789 |
| Reactivity : | Human;Mouse;Rat |
| Applications : | WB;ELISA |
| Target : | ERLIN1/2 |
| Gene Name : | ERLIN1/ERLIN2 |
| Protein Name : | ERLIN1/2 |
| Human Swiss Prot No : | O75477/O94905 |
| Immunogen : | Synthesized peptide derived from ERLIN1/2 at AA range: 31-80 |
| Specificity : | ERLIN1/2 Polyclonal Antibody detects endogenous levels of ERLIN1/2 |
| Formulation : | Liquid in PBS containing 50% glycerol, 0.5% BSA and 0.02% sodium azide. |
| Source : | Polyclonal, Rabbit,IgG |
| Dilution : | WB 1:500-2000, ELISA 1:10000-20000 |
| Purification : | The antibody was affinity-purified from rabbit antiserum by affinity-chromatography using epitope-specific immunogen. |
| Concentration : | 1 mg/ml |
| Storage Stability : | -15°C to -25°C/1 year(Do not lower than -25°C) |
| Observed Band : | 40+42kD |
| Background : | similarity:Belongs to the band 7/mec-2 family.,subcellular location:Associated with lipid raft-like domains of the endoplasmic reticulum membrane.,tissue specificity:Expressed in heart, placenta, liver, kidney, pancreas, prostate, testis, ovary and small intestine., |

| | |
|-------------------------------|--|
| Function : | similarity:Belongs to the band 7/mec-2 family.,subcellular location:Associated with lipid raft-like domains of the endoplasmic reticulum membrane.,tissue specificity:Expressed in heart, placenta, liver, kidney, pancreas, prostate, testis, ovary and small intestine., |
| Subcellular Location : | Endoplasmic reticulum membrane ; Single-pass type II membrane protein . Associated with lipid raft-like domains of the endoplasmic reticulum membrane. |
| Expression : | Expressed in heart, placenta, liver, kidney, pancreas, prostate, testis, ovary and small intestine. |
| Sort : | 5734 |
| No4 : | 1 |
| Host : | Rabbit |
| Modifications : | Unmodified |

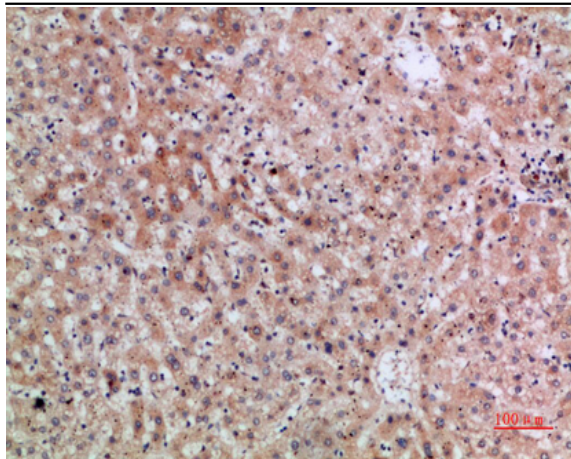
Products Images



Western Blot analysis of HEPG2 3T3 Hela cells using ERLIN1/2 Polyclonal Antibody diluted at 1:800. Secondary antibody(catalog#:RS0002) was diluted at 1:20000



Western Blot analysis of various cells using Antibody diluted at 1:1000. Secondary antibody(catalog#:RS0002) was diluted at 1:20000



Immunohistochemical analysis of paraffin-embedded human-liver, antibody was diluted at 1:200