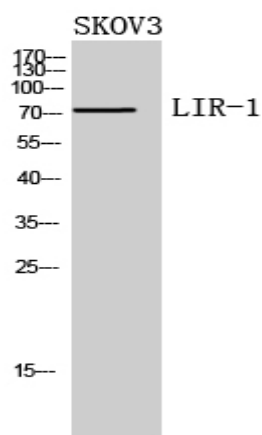


LIR-1 Polyclonal Antibody

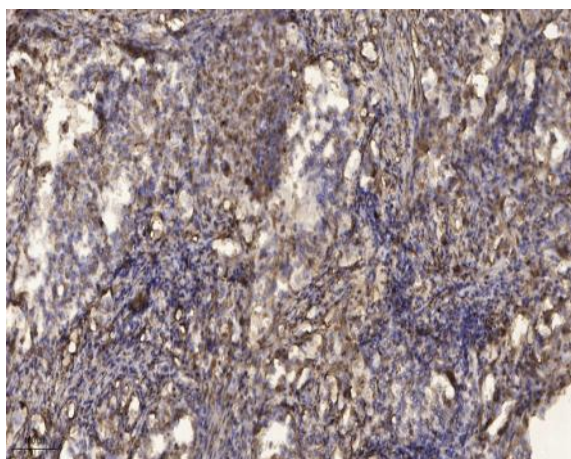
Catalog No :	YT5596
Reactivity :	Human;Rat;Mouse;
Applications :	WB;IHC
Target :	LIR-1
Fields :	>>Osteoclast differentiation;>>B cell receptor signaling pathway
Gene Name :	LILRB1
Protein Name :	Leukocyte immunoglobulin-like receptor subfamily B member 1
Human Gene Id :	10859
Human Swiss Prot No :	Q8NHL6
Immunogen :	The antiserum was produced against synthesized peptide derived from the N-terminal region of human LILRB1. AA range:21-70
Specificity :	LIR-1 Polyclonal Antibody detects endogenous levels of LIR-1 protein.
Formulation :	Liquid in PBS containing 50% glycerol, 0.5% BSA and 0.02% sodium azide.
Source :	Polyclonal, Rabbit,IgG
Dilution :	WB 1:500-2000;IHC 1:50-300
Purification :	The antibody was affinity-purified from rabbit antiserum by affinity-chromatography using epitope-specific immunogen.
Concentration :	1 mg/ml
Storage Stability :	-15°C to -25°C/1 year(Do not lower than -25°C)
Observed Band :	72kD

Background :	<p>This gene is a member of the leukocyte immunoglobulin-like receptor (LIR) family, which is found in a gene cluster at chromosomal region 19q13.4. The encoded protein belongs to the subfamily B class of LIR receptors which contain two or four extracellular immunoglobulin domains, a transmembrane domain, and two to four cytoplasmic immunoreceptor tyrosine-based inhibitory motifs (ITIMs). The receptor is expressed on immune cells where it binds to MHC class I molecules on antigen-presenting cells and transduces a negative signal that inhibits stimulation of an immune response. It is thought to control inflammatory responses and cytotoxicity to help focus the immune response and limit autoreactivity. Multiple transcript variants encoding different isoforms have been found for this gene. [provided by RefSeq, Jul 2008],</p>
Function :	<p>domain:Contains 4 copies of a cytoplasmic motif that is referred to as the immunoreceptor tyrosine-based inhibitor motif (ITIM). This motif is involved in modulation of cellular responses. The phosphorylated ITIM motif can bind the SH2 domain of several SH2-containing phosphatases.,function:Receptor for class I MHC antigens. Recognizes a broad spectrum of HLA-A, HLA-B, HLA-C and HLA-G alleles. Receptor for H301/UL18, a human cytomegalovirus class I MHC homolog. Ligand binding results in inhibitory signals and down-regulation of the immune response. Engagement of LILRB1 present on natural killer cells or T-cells by class I MHC molecules protects the target cells from lysis. Interaction with HLA-B or HLA-E leads to inhibition of the signal triggered by FCER1A and inhibits serotonin release. Inhibits FCGR1A-mediated phosphorylation of cellular proteins and mobilization of intracellular calc</p>
Subcellular Location :	<p>Cell membrane ; Single-pass type I membrane protein .; [Isoform 5]: Secreted .</p>
Expression :	<p>Expressed in B cells, monocytes and various dendritic cell (DC) subsets including myeloid, plasmacytoid and tolerogenic DCs (at protein level) (PubMed:20448110, PubMed:9285411, PubMed:9842885, PubMed:24453251). Expressed in decidual macrophages (at protein level) (PubMed:19304799). Expressed in decidual NK cells (at protein level) (PubMed:29262349).</p>
Sort :	<p>9202</p>
No4 :	<p>1</p>

Products Images



Western Blot analysis of SKOV3 cells using LIR-1 Polyclonal Antibody. Secondary antibody(catalog#:RS0002) was diluted at 1:20000



Immunohistochemical analysis of paraffin-embedded human Squamous cell carcinoma of lung. 1, Antibody was diluted at 1:200(4° overnight). 2, Tris-EDTA,pH9.0 was used for antigen retrieval. 3,Secondary antibody was diluted at 1:200(room temperature, 45min).