

PPP1R15B Polyclonal Antibody

Catalog No :	YT5571
Reactivity :	Human;Rat;Mouse;
Applications :	WB;IHC;IF;ELISA
Target :	PPP1R15B
Gene Name :	PPP1R15B
Protein Name :	Protein phosphatase 1 regulatory subunit 15B
Human Gene Id :	84919
Human Swiss Prot No :	Q5SWA1
Mouse Swiss Prot No :	Q8BFW3
Immunogen :	The antiserum was produced against synthesized peptide derived from the Internal region of human PPP1R15B. AA range:411-460
Specificity :	PPP1R15B Polyclonal Antibody detects endogenous levels of PPP1R15B protein.
Formulation :	Liquid in PBS containing 50% glycerol, 0.5% BSA and 0.02% sodium azide.
Source :	Polyclonal, Rabbit,IgG
Dilution :	WB 1:500 - 1:2000. IHC: 1:100-1:300. ELISA: 1:10000.. IF 1:50-200
Purification :	The antibody was affinity-purified from rabbit antiserum by affinity-chromatography using epitope-specific immunogen.
Concentration :	1 mg/ml
Storage Stability :	-15°C to -25°C/1 year(Do not lower than -25°C)
Observed Band :	78kD

Background :

This gene encodes a protein phosphatase I-interacting protein that promotes the dephosphorylation of eukaryotic translation initiation factor 2A to regulate translation under conditions of cellular stress. The transcribed messenger RNA contains two upstream open reading frames (ORFs) that repress translation of the main protein coding ORF under normal conditions, while the protein coding ORF is expressed at high levels in response to stress. Continual translation of the mRNA under conditions of eukaryotic translation initiation factor 2A inactivation is thought to create a feedback loop for reactivation of the gene during recovery from stress. In addition, it has been shown that this protein plays a role in membrane traffic that is independent of translation and that it is required for exocytosis from erythroleukemia cells. Allelic variants of this gene are associated with mi

Function :

function:Maintains low levels of EIF2S1 phosphorylation in unstressed cells by promoting its dephosphorylation by PP1.,miscellaneous:The phosphatase activity of the PPP1R15B-PP1 complex toward EIF2S1 is specifically inhibited by Salubrinal, a drug that protects cells from endoplasmic reticulum stress.,similarity:Belongs to the PPP1R15 family.,subunit:Part of a complex containing PPP1R15B, PP1 and NCK1/2 (By similarity). Interacts with PP1.,

Subcellular Location :

protein phosphatase type 1 complex,

Expression :

Eye,Liver,Stomach,

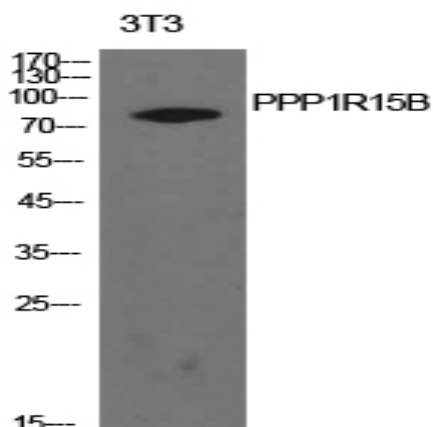
Sort :

12957

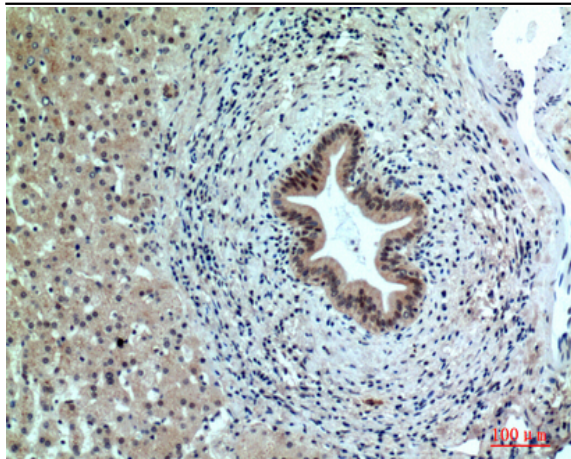
No4 :

1

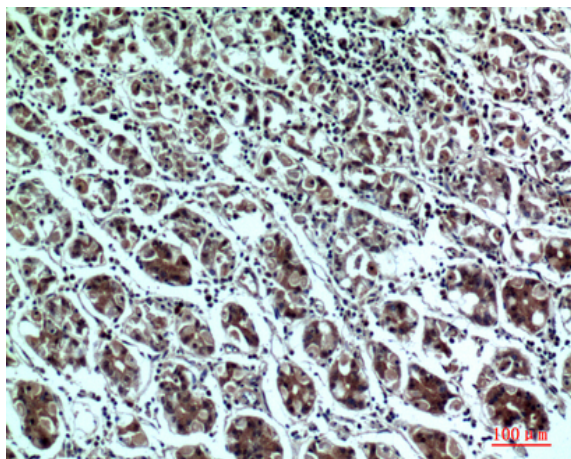
Products Images



Western Blot analysis of NIH-3T3 cells using PPP1R15B Polyclonal Antibody. Secondary antibody(catalog#:RS0002) was diluted at 1:20000



Immunohistochemical analysis of paraffin-embedded human-liver, antibody was diluted at 1:100



Immunohistochemical analysis of paraffin-embedded human-stomach, antibody was diluted at 1:100