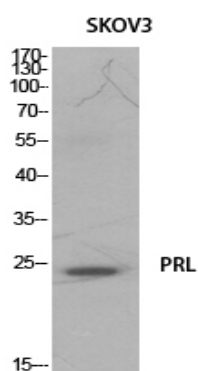


## Prolactin Polyclonal Antibody

<b>Catalog No :</b>	YT5524
<b>Reactivity :</b>	Human;Rat;Mouse;
<b>Applications :</b>	WB;IHC;IF;ELISA
<b>Target :</b>	Prolactin
<b>Fields :</b>	>>Cytokine-cytokine receptor interaction;>>Neuroactive ligand-receptor interaction;>>PI3K-Akt signaling pathway;>>JAK-STAT signaling pathway;>>Prolactin signaling pathway
<b>Gene Name :</b>	PRL
<b>Protein Name :</b>	Prolactin
<b>Human Gene Id :</b>	5617
<b>Human Swiss Prot No :</b>	P01236
<b>Mouse Swiss Prot No :</b>	P06879
<b>Immunogen :</b>	The antiserum was produced against synthesized peptide derived from the Internal region of human PRL. AA range:131-180
<b>Specificity :</b>	Prolactin Polyclonal Antibody detects endogenous levels of Prolactin protein.
<b>Formulation :</b>	Liquid in PBS containing 50% glycerol, 0.5% BSA and 0.02% sodium azide.
<b>Source :</b>	Polyclonal, Rabbit,IgG
<b>Dilution :</b>	WB 1:500 - 1:2000. IHC: 1:100-1:300. ELISA: 1:20000.. IF 1:50-200
<b>Purification :</b>	The antibody was affinity-purified from rabbit antiserum by affinity-chromatography using epitope-specific immunogen.
<b>Concentration :</b>	1 mg/ml

<b>Storage Stability :</b>	-15°C to -25°C/1 year(Do not lower than -25°C)
<b>Observed Band :</b>	25kD
<b>Cell Pathway :</b>	Cytokine-cytokine receptor interaction;Neuroactive ligand-receptor interaction;Jak_STAT;
<b>Background :</b>	This gene encodes the anterior pituitary hormone prolactin. This secreted hormone is a growth regulator for many tissues, including cells of the immune system. It may also play a role in cell survival by suppressing apoptosis, and it is essential for lactation. Alternative splicing results in multiple transcript variants that encode the same protein. [provided by RefSeq, Aug 2011],
<b>Function :</b>	function:Prolactin acts primarily on the mammary gland by promoting lactation.,online information:Prolactin entry,similarity:Belongs to the somatotropin/prolactin family.,
<b>Subcellular Location :</b>	Secreted.
<b>Expression :</b>	Mammary gland,Pituitary,Testis,
<b>Sort :</b>	13044
<b>No4 :</b>	1

## Products Images



Western Blot analysis of SKOV3 cells using Prolactin Polyclonal Antibody. Secondary antibody(catalog#:RS0002) was diluted at 1:20000