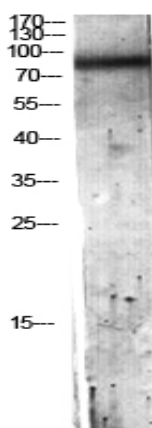


C7 Polyclonal Antibody

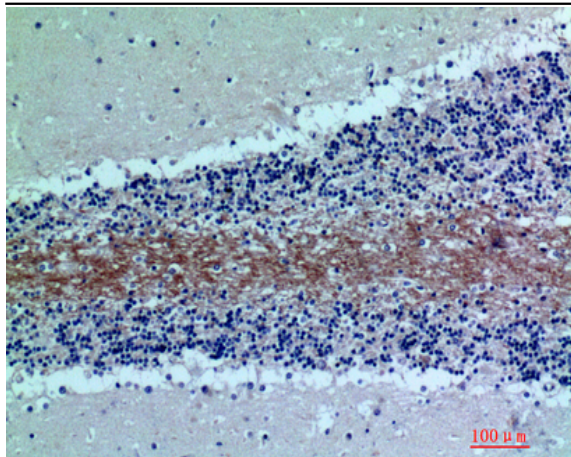
Catalog No :	YT5700
Reactivity :	Human;Rat;Mouse;
Applications :	WB;IHC;IF;ELISA
Target :	C7
Fields :	>>Complement and coagulation cascades;>>Prion disease;>>Coronavirus disease - COVID-19;>>Systemic lupus erythematosus
Gene Name :	C7
Protein Name :	Complement component C7
Human Gene Id :	730
Human Swiss Prot No :	P10643
Immunogen :	The antiserum was produced against synthesized peptide derived from the N-terminal region of human C7. AA range:100-150
Specificity :	C7 Polyclonal Antibody detects endogenous levels of C7 protein.
Formulation :	Liquid in PBS containing 50% glycerol, 0.5% BSA and 0.02% sodium azide.
Source :	Polyclonal, Rabbit,IgG
Dilution :	WB 1:500 - 1:2000. IHC: 1:100-1:300. ELISA: 1:10000.. IF 1:50-200
Purification :	The antibody was affinity-purified from rabbit antiserum by affinity-chromatography using epitope-specific immunogen.
Concentration :	1 mg/ml
Storage Stability :	-15°C to -25°C/1 year(Do not lower than -25°C)
Observed Band :	93kD

Cell Pathway :	Complement and coagulation cascades;Prion diseases;Systemic lupus erythematosus;
Background :	C7 is a component of the complement system. It participates in the formation of Membrane Attack Complex (MAC). People with C7 deficiency are prone to bacterial infection. [provided by RefSeq, Jul 2008],
Function :	disease:Defects in C7 are a cause of component C7 deficiency (C7D) [MIM:217070]. Patients with C7D suffer from recurrent bacterial infections, predominantly from Neisseria meningitidis.,function:C7 is a constituent of the membrane attack complex. C7 binds to C5b forming the C5b-7 complex, where it serves as a membrane anchor.,online information:C7 mutation db,PTM:C7 has 28 disulfide bridges.,similarity:Belongs to the complement C6/C7/C8/C9 family.,similarity:Contains 1 EGF-like domain.,similarity:Contains 1 LDL-receptor class A domain.,similarity:Contains 1 MACPF domain.,similarity:Contains 2 Sushi (CCP/SCR) domains.,similarity:Contains 2 TSP type-1 domains.,subunit:Monomer or dimer; as a C5b-7 complex it can also form multimeric rosettes.,
Subcellular Location :	Secreted.
Expression :	Liver,Placenta,Plasma,PNS,
Sort :	2951
Host :	Rabbit
Modifications :	Unmodified

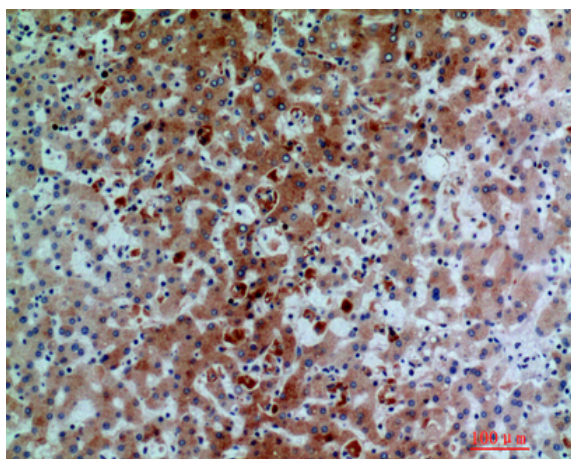
Products Images



Western blot analysis of HeLa lysis using C7 antibody. Antibody was diluted at 1:500. Secondary antibody(catalog#:RS0002) was diluted at 1:20000



Immunohistochemical analysis of paraffin-embedded human-brain, antibody was diluted at 1:200



Immunohistochemical analysis of paraffin-embedded human-liver, antibody was diluted at 1:200