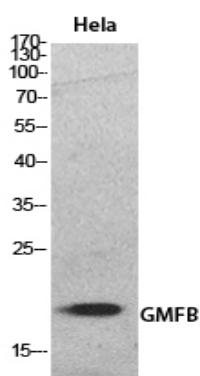


## GMF-β Polyclonal Antibody

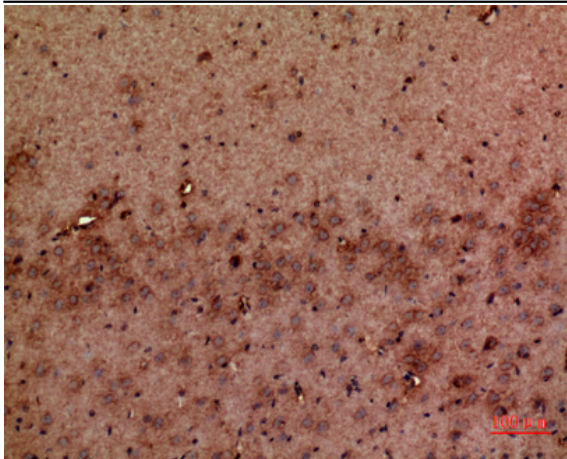
<b>Catalog No :</b>	YT5513
<b>Reactivity :</b>	Human;Mouse;Rat
<b>Applications :</b>	WB;IHC;IF;ELISA
<b>Target :</b>	GMF-β
<b>Gene Name :</b>	GMFB
<b>Protein Name :</b>	Glia maturation factor beta
<b>Human Gene Id :</b>	2764
<b>Human Swiss Prot No :</b>	P60983
<b>Mouse Gene Id :</b>	63985
<b>Mouse Swiss Prot No :</b>	Q9CQI3
<b>Rat Gene Id :</b>	81661
<b>Rat Swiss Prot No :</b>	Q63228
<b>Immunogen :</b>	The antiserum was produced against synthesized peptide derived from the Internal region of human GMFB. AA range:1-50
<b>Specificity :</b>	GMF-β Polyclonal Antibody detects endogenous levels of GMF-β protein.
<b>Formulation :</b>	Liquid in PBS containing 50% glycerol, 0.5% BSA and 0.02% sodium azide.
<b>Source :</b>	Polyclonal, Rabbit,IgG
<b>Dilution :</b>	WB 1:500 - 1:2000. IHC: 1:100-1:300. ELISA: 1:20000.. IF 1:50-200
<b>Purification :</b>	The antibody was affinity-purified from rabbit antiserum by affinity-chromatography using epitope-specific immunogen.

<b>Concentration :</b>	1 mg/ml
<b>Storage Stability :</b>	-15°C to -25°C/1 year(Do not lower than -25°C)
<b>Observed Band :</b>	17kD
<b>Background :</b>	function:This protein causes differentiation of brain cells, stimulation of neural regeneration, and inhibition of proliferation of tumor cells.,PTM:Phosphorylated; stimulated by phorbol ester.,similarity:Belongs to the actin-binding proteins ADF family. GMF subfamily.,similarity:Contains 1 ADF-H domain.,
<b>Function :</b>	function:This protein causes differentiation of brain cells, stimulation of neural regeneration, and inhibition of proliferation of tumor cells.,PTM:Phosphorylated; stimulated by phorbol ester.,similarity:Belongs to the actin-binding proteins ADF family. GMF subfamily.,similarity:Contains 1 ADF-H domain.,
<b>Subcellular Location :</b>	intracellular,
<b>Expression :</b>	Bladder,Brain,
<b>Sort :</b>	6668
<b>No4 :</b>	1

## Products Images



Western Blot analysis of HeLa cells using GMF-β Polyclonal Antibody. Secondary antibody(catalog#:RS0002) was diluted at 1:20000



Immunohistochemical analysis of paraffin-embedded mouse-brain, antibody was diluted at 1:100