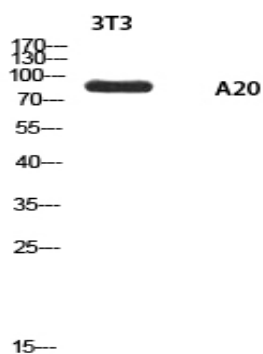


## A20 Polyclonal Antibody

|                              |   |
|------------------------------|---|
| <b>Catalog No :</b>          | YT5681  |
| <b>Reactivity :</b>          | Human;Rat;Mouse;  |
| <b>Applications :</b>        | WB;ELISA  |
| <b>Target :</b>              | A20   |
| <b>Gene Name :</b>           | ANKRD20A1   |
| <b>Protein Name :</b>        | Ankyrin repeat domain-containing protein 20A1   |
| <b>Human Gene Id :</b>       | 84210   |
| <b>Human Swiss Prot No :</b> | Q5TYW2  |
| <b>Immunogen :</b>           | Synthesized peptide derived from the Internal region of human A20.  |
| <b>Specificity :</b>         | A20 Polyclonal Antibody detects endogenous levels of A20 protein.   |
| <b>Formulation :</b>         | Liquid in PBS containing 50% glycerol, 0.5% BSA and 0.02% sodium azide.   |
| <b>Source :</b>              | Polyclonal, Rabbit,IgG  |
| <b>Dilution :</b>            | WB 1:500 - 1:2000. ELISA: 1:10000. Not yet tested in other applications.  |
| <b>Purification :</b>        | The antibody was affinity-purified from rabbit antiserum by affinity-chromatography using epitope-specific immunogen. |
| <b>Concentration :</b>       | 1 mg/ml   |
| <b>Storage Stability :</b>   | -15°C to -25°C/1 year(Do not lower than -25°C)  |
| <b>Observed Band :</b>       | 95kD  |
| <b>Background :</b>          | similarity:Contains 5 ANK repeats.,tissue specificity:Widely expressed; not found in kidney, nor in liver.,           |

|                               |   |
|-------------------------------|---|
| <b>Function :</b>             | similarity:Contains 5 ANK repeats.,tissue specificity:Widely expressed; not found in kidney, nor in liver., |
| <b>Subcellular Location :</b> | plasma membrane,  |
| <b>Expression :</b>           | Testis,   |
| <b>Tag :</b>                  | hot   |
| <b>Sort :</b>                 | 1552  |
| <b>Host :</b>                 | Rabbit  |
| <b>Modifications :</b>        | Unmodified  |

## Products Images



Western blot analysis of 3T3 using A20 antibody. Secondary antibody(catalog#:RS0002) was diluted at 1:20000