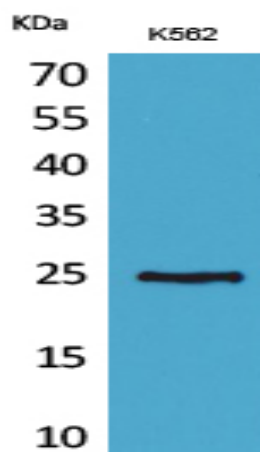


CD7 Polyclonal Antibody

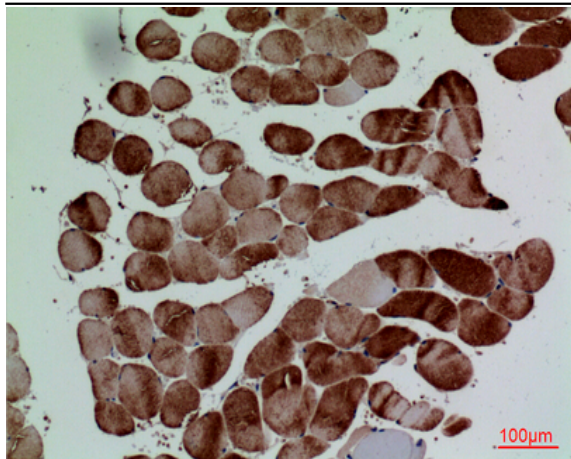
Catalog No :	YT5242
Reactivity :	Human;Rat;Mouse;
Applications :	WB;IHC;IF;ELISA
Target :	CD7
Fields :	>>Hematopoietic cell lineage
Gene Name :	CD7
Protein Name :	T-cell antigen CD7
Human Gene Id :	924
Human Swiss Prot No :	P09564
Mouse Swiss Prot No :	P50283
Immunogen :	The antiserum was produced against synthesized peptide derived from the Internal region of human CD7. AA range:51-100
Specificity :	CD7 Polyclonal Antibody detects endogenous levels of CD7 protein.
Formulation :	Liquid in PBS containing 50% glycerol, 0.5% BSA and 0.02% sodium azide.
Source :	Polyclonal, Rabbit,IgG
Dilution :	WB 1:500 - 1:2000. IHC: 1:100-300 ELISA: 1:20000.. IF 1:50-200
Purification :	The antibody was affinity-purified from rabbit antiserum by affinity-chromatography using epitope-specific immunogen.
Concentration :	1 mg/ml
Storage Stability :	-15°C to -25°C/1 year(Do not lower than -25°C)

Observed Band :	25kD
Cell Pathway :	Hematopoietic cell lineage;
Background :	This gene encodes a transmembrane protein which is a member of the immunoglobulin superfamily. This protein is found on thymocytes and mature T cells. It plays an essential role in T-cell interactions and also in T-cell/B-cell interaction during early lymphoid development. [provided by RefSeq, Jul 2008],
Function :	function:Not yet known.,similarity:Contains 1 Ig-like (immunoglobulin-like) domain.,subunit:Interacts with SECTM1.,
Subcellular Location :	Membrane; Single-pass type I membrane protein.
Expression :	Liver,Muscle,Spleen,
Sort :	84
No4 :	1

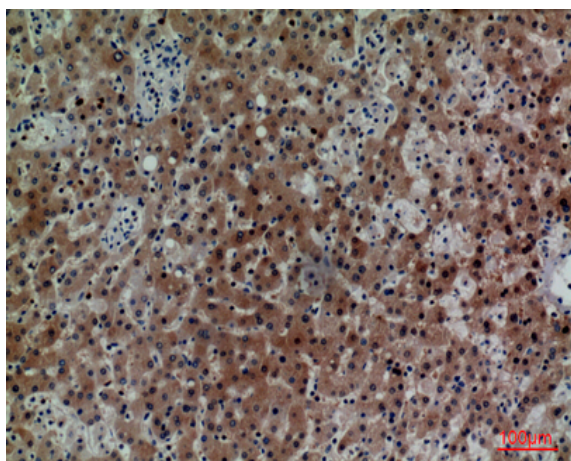
Products Images



Western Blot analysis of K562 cells using CD7 Polyclonal Antibody. Secondary antibody(catalog#:RS0002) was diluted at 1:20000



Immunohistochemical analysis of paraffin-embedded human-muscle, antibody was diluted at 1:100



Immunohistochemical analysis of paraffin-embedded human-liver, antibody was diluted at 1:100

Western blot analysis of lysate from K562 cells, using CD7 Antibody.