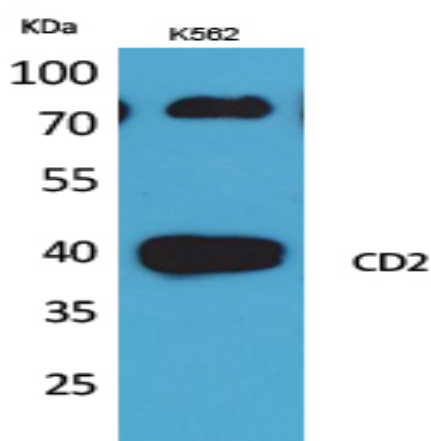


CD2 Polyclonal Antibody

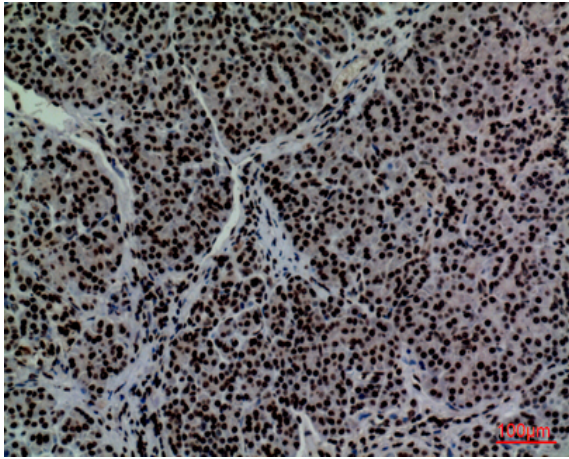
Catalog No :	YT5241
Reactivity :	Human;Rat;Mouse;
Applications :	WB;IHC;IF;ELISA
Target :	CD2
Fields :	>>Cell adhesion molecules;>>Hematopoietic cell lineage
Gene Name :	CD2
Protein Name :	T-cell surface antigen CD2
Human Gene Id :	914
Human Swiss Prot No :	P06729
Mouse Swiss Prot No :	P08920
Immunogen :	The antiserum was produced against synthesized peptide derived from the N-terminal region of human CD2. AA range:31-80
Specificity :	CD2 Polyclonal Antibody detects endogenous levels of CD2 protein.
Formulation :	Liquid in PBS containing 50% glycerol, 0.5% BSA and 0.02% sodium azide.
Source :	Polyclonal, Rabbit,IgG
Dilution :	WB 1:500 - 1:2000. IHC: 1:100-300 ELISA: 1:20000.. IF 1:50-200
Purification :	The antibody was affinity-purified from rabbit antiserum by affinity-chromatography using epitope-specific immunogen.
Concentration :	1 mg/ml
Storage Stability :	-15°C to -25°C/1 year(Do not lower than -25°C)

Observed Band :	39kD
Cell Pathway :	Cell adhesion molecules (CAMs);Hematopoietic cell lineage;
Background :	The protein encoded by this gene is a surface antigen found on all peripheral blood T-cells. The encoded protein interacts with LFA3 (CD58) on antigen presenting cells to optimize immune recognition. A locus control region (LCR) has been found in the 3' flanking sequence of this gene. [provided by RefSeq, Jun 2016],
Function :	function:CD2 interacts with lymphocyte function-associated antigen (LFA-3) and CD48/BCM1 to mediate adhesion between T-cells and other cell types. CD2 is implicated in the triggering of T-cells, the cytoplasmic domain is implicated in the signaling function.,online information:CD2 entry,similarity:Contains 1 Ig-like C2-type (immunoglobulin-like) domain.,similarity:Contains 1 Ig-like V-type (immunoglobulin-like) domain.,subunit:Interacts with CD2AP (By similarity). Interacts with PSTPIP1.,
Subcellular Location :	Cell membrane ; Single-pass type I membrane protein .
Expression :	Expressed in natural killer cells (at protein level).
Sort :	42
No4 :	1

Products Images



Western Blot analysis of K562 cells using CD2 Polyclonal Antibody. Secondary antibody(catalog#:RS0002) was diluted at 1:20000



Immunohistochemical analysis of paraffin-embedded human-pancreas, antibody was diluted at 1:100