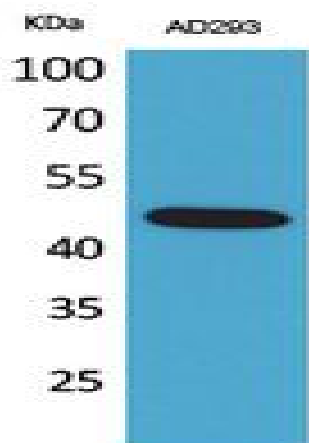


SCYL1BP1 Polyclonal Antibody

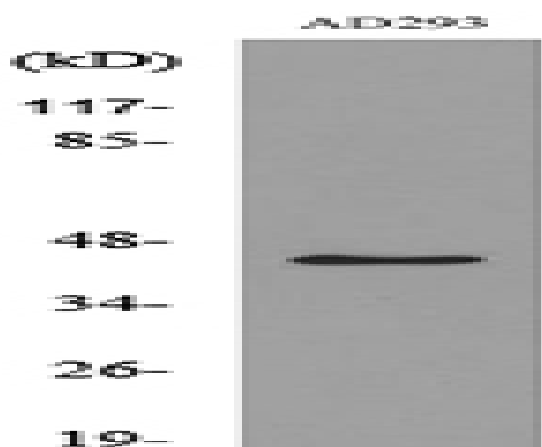
Catalog No :	YT5369
Reactivity :	Human;Mouse;Rat
Applications :	WB;ELISA;IHC
Target :	SCYL1BP1
Fields :	>>p53 signaling pathway
Gene Name :	GORAB
Protein Name :	RAB6-interacting golgin
Human Gene Id :	92344
Human Swiss Prot No :	Q5T7V8
Mouse Gene Id :	98376
Mouse Swiss Prot No :	Q8BRM2
Rat Gene Id :	304923
Rat Swiss Prot No :	B1H222
Immunogen :	The antiserum was produced against synthesized peptide derived from the N-terminal region of human GORAB. AA range:1-50
Specificity :	SCYL1BP1 Polyclonal Antibody detects endogenous levels of SCYL1BP1 protein.
Formulation :	Liquid in PBS containing 50% glycerol, 0.5% BSA and 0.02% sodium azide.
Source :	Polyclonal, Rabbit,IgG
Dilution :	WB 1:500-2000;IHC 1:50-300; ELISA 2000-20000

Purification :	The antibody was affinity-purified from rabbit antiserum by affinity-chromatography using epitope-specific immunogen.
Concentration :	1 mg/ml
Storage Stability :	-15°C to -25°C/1 year(Do not lower than -25°C)
Observed Band :	45kD
Background :	golgin, RAB6 interacting(GORAB) Homo sapiens This gene encodes a member of the golgin family, a group of coiled-coil proteins localized to the Golgi. The encoded protein may function in the secretory pathway. The encoded protein, which also localizes to the cytoplasm, was identified by interactions with the N-terminal kinase-like protein, and thus it may function in mitosis. Mutations in this gene have been associated with geroderma osteodysplastica. Alternatively spliced transcript variants have been described. [provided by RefSeq, Mar 2009],
Function :	caution:It is uncertain whether Met-1 or Met-26 is the initiator.,disease:Defects in GORAB are the cause of geroderma osteodysplasticum (GO) [MIM:231070]; also known as geroderma osteodysplastica or Walt Disney dwarfism. GO is a rare autosomal recessive disorder characterized by lax, wrinkled skin, joint laxity and a typical face with a prematurely aged appearance. Skeletal signs include severe osteoporosis leading to frequent fractures, malar and mandibular hypoplasia and a variable degree of growth retardation.,similarity:Belongs to the GORAB family.,subunit:Interacts with SCYL1 (By similarity). Interacts with RCHY1 and RAB6A/RAB6.,
Subcellular Location :	Cytoplasm . Golgi apparatus .
Expression :	Embryo,Pancreas,Testis,Trachea,
Sort :	16189
Host :	Rabbit
Modifications :	Unmodified

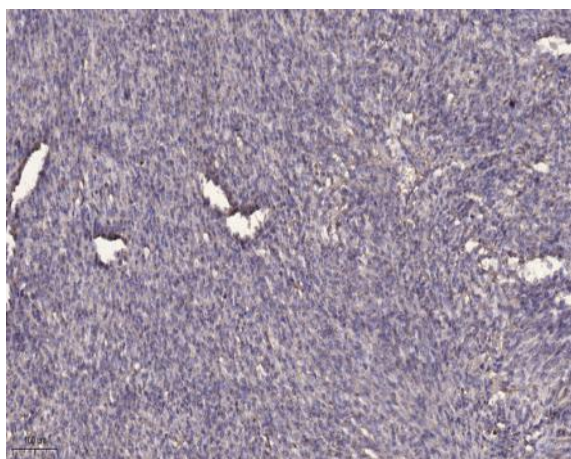
Products Images



Western Blot analysis of AD293 cells using SCYL1BP1 Polyclonal Antibody. Secondary antibody(catalog#:RS0002) was diluted at 1:20000



Western blot analysis of lysate from AD293 cells, using GORAB Antibody.



Immunohistochemical analysis of paraffin-embedded human Colon cancer. 1, Antibody was diluted at 1:200(4° overnight). 2, Tris-EDTA,pH9.0 was used for antigen retrieval. 3,Secondary antibody was diluted at 1:200(room temperature, 45min).