

KLF12 Polyclonal Antibody

Catalog No :	YT5119
Reactivity :	Human;Mouse
Applications :	WB;IHC;IF;ELISA
Target :	KLF12
Gene Name :	KLF12
Protein Name :	Krueppel-like factor 12
Human Gene Id :	11278
Human Swiss Prot No :	Q9Y4X4
Mouse Gene Id :	16597
Mouse Swiss Prot No :	O35738
Immunogen :	Synthesized peptide derived from the Internal region of human KLF12.
Specificity :	KLF12 Polyclonal Antibody detects endogenous levels of KLF12 protein.
Formulation :	Liquid in PBS containing 50% glycerol, 0.5% BSA and 0.02% sodium azide.
Source :	Polyclonal, Rabbit,IgG
Dilution :	WB 1:500 - 1:2000. IHC: 1:100-300 ELISA: 1:20000.. IF 1:50-200
Purification :	The antibody was affinity-purified from rabbit antiserum by affinity-chromatography using epitope-specific immunogen.
Concentration :	1 mg/ml
Storage Stability :	-15°C to -25°C/1 year(Do not lower than -25°C)

Observed Band : 44kD

Background : Activator protein-2 alpha (AP-2 alpha) is a developmentally-regulated transcription factor and important regulator of gene expression during vertebrate development and carcinogenesis. The protein encoded by this gene is a member of the Kruppel-like zinc finger protein family and can repress expression of the AP-2 alpha gene by binding to a specific site in the AP-2 alpha gene promoter. Repression by the encoded protein requires binding with a corepressor, CtBP1. Two transcript variants encoding different isoforms have been found for this gene. [provided by RefSeq, Jul 2008],

Function : function:Confers strong transcriptional repression to the AP-2-alpha gene. Binds to a regulatory element (A32) in the AP-2-alpha gene promoter.,similarity:Belongs to the Sp1 C2H2-type zinc-finger protein family.,similarity:Contains 3 C2H2-type zinc fingers.,

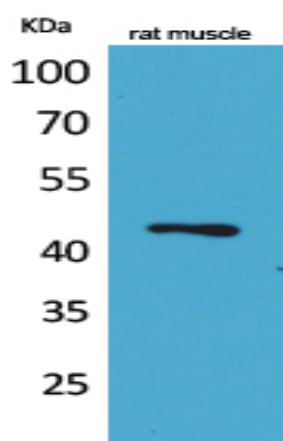
Subcellular Location : Nucleus.

Expression : Brain,Hypothalamus,Umbilical cord blood,

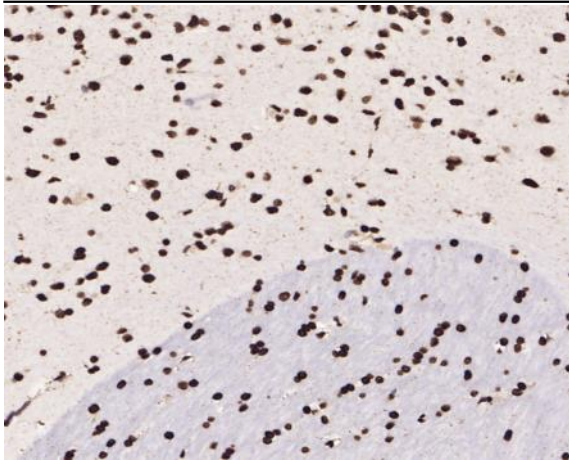
Sort : 8946

No4 : 1

Products Images



Western Blot analysis of rat muscle cells using KLF12 Polyclonal Antibody. Secondary antibody(catalog#:RS0002) was diluted at 1:20000 cells nucleus extracted by Minute TM Cytoplasmic and Nuclear Fractionation kit (SC-003, Inventbiotech, MN, USA).



Immunohistochemical analysis of paraffin-embedded mouse-brain, antibody was diluted at 1:100