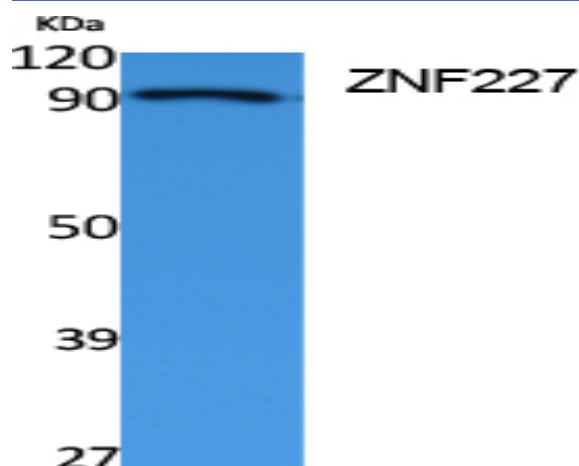


ZNF227 Polyclonal Antibody

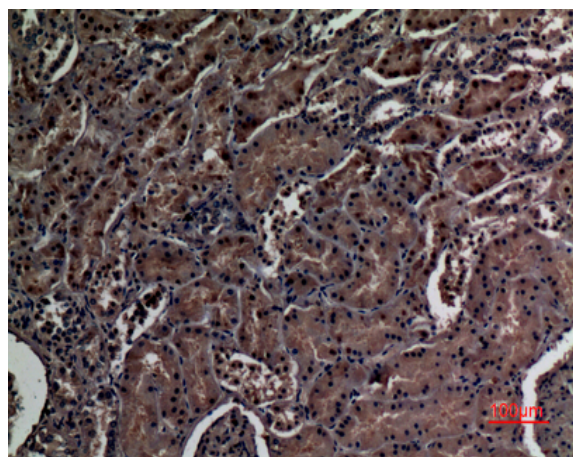
Catalog No :	YT5085
Reactivity :	Human;Rat;Mouse;
Applications :	WB;IHC;IF;ELISA
Target :	ZNF227
Fields :	>>Herpes simplex virus 1 infection
Gene Name :	ZNF227
Protein Name :	Zinc finger protein 227
Human Gene Id :	7770
Human Swiss Prot No :	Q86WZ6
Immunogen :	Synthesized peptide derived from the Internal region of human ZNF227.
Specificity :	ZNF227 Polyclonal Antibody detects endogenous levels of ZNF227 protein.
Formulation :	Liquid in PBS containing 50% glycerol, 0.5% BSA and 0.02% sodium azide.
Source :	Polyclonal, Rabbit,IgG
Dilution :	WB 1:500 - 1:2000. IHC: 1:100-300 ELISA: 1:40000.. IF 1:50-200
Purification :	The antibody was affinity-purified from rabbit antiserum by affinity-chromatography using epitope-specific immunogen.
Concentration :	1 mg/ml
Storage Stability :	-15°C to -25°C/1 year(Do not lower than -25°C)
Observed Band :	92kD

Background :	function:May be involved in transcriptional regulation.,similarity:Belongs to the krueppel C2H2-type zinc-finger protein family.,similarity:Contains 1 KRAB domain.,similarity:Contains 19 C2H2-type zinc fingers.,
Function :	function:May be involved in transcriptional regulation.,similarity:Belongs to the krueppel C2H2-type zinc-finger protein family.,similarity:Contains 1 KRAB domain.,similarity:Contains 19 C2H2-type zinc fingers.,
Subcellular Location :	Nucleus .
Expression :	Stomach,Testis,
Sort :	24714
No4 :	1

Products Images



Western Blot analysis of extracts from Jurkat cells, using ZNF227 Polyclonal Antibody. Secondary antibody(catalog#:RS0002) was diluted at 1:20000 cells nucleus extracted by Minute TM Cytoplasmic and Nuclear Fractionation kit (SC-003, Inventbiotech, MN, USA).



Immunohistochemical analysis of paraffin-embedded human-kidney, antibody was diluted at 1:100